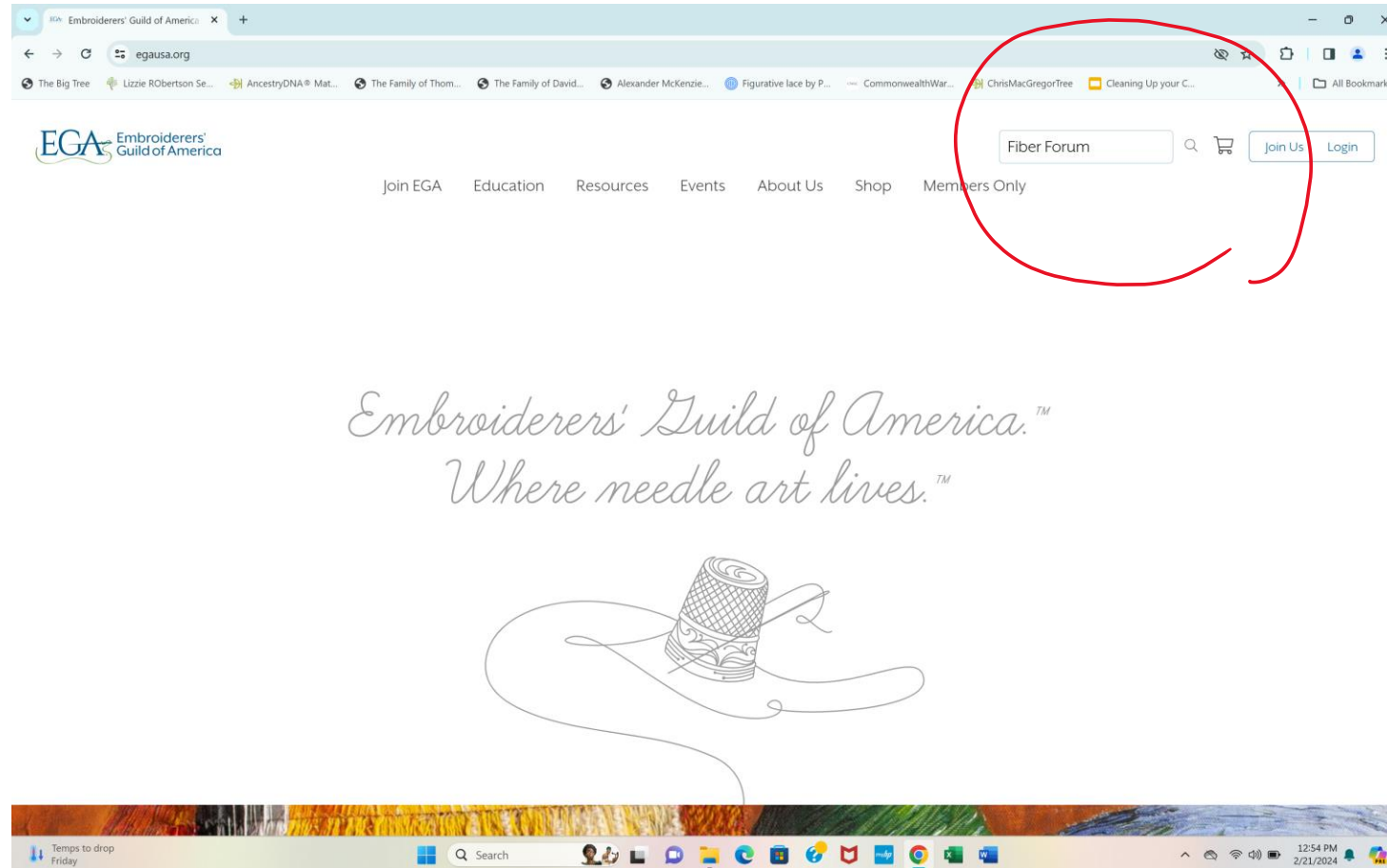
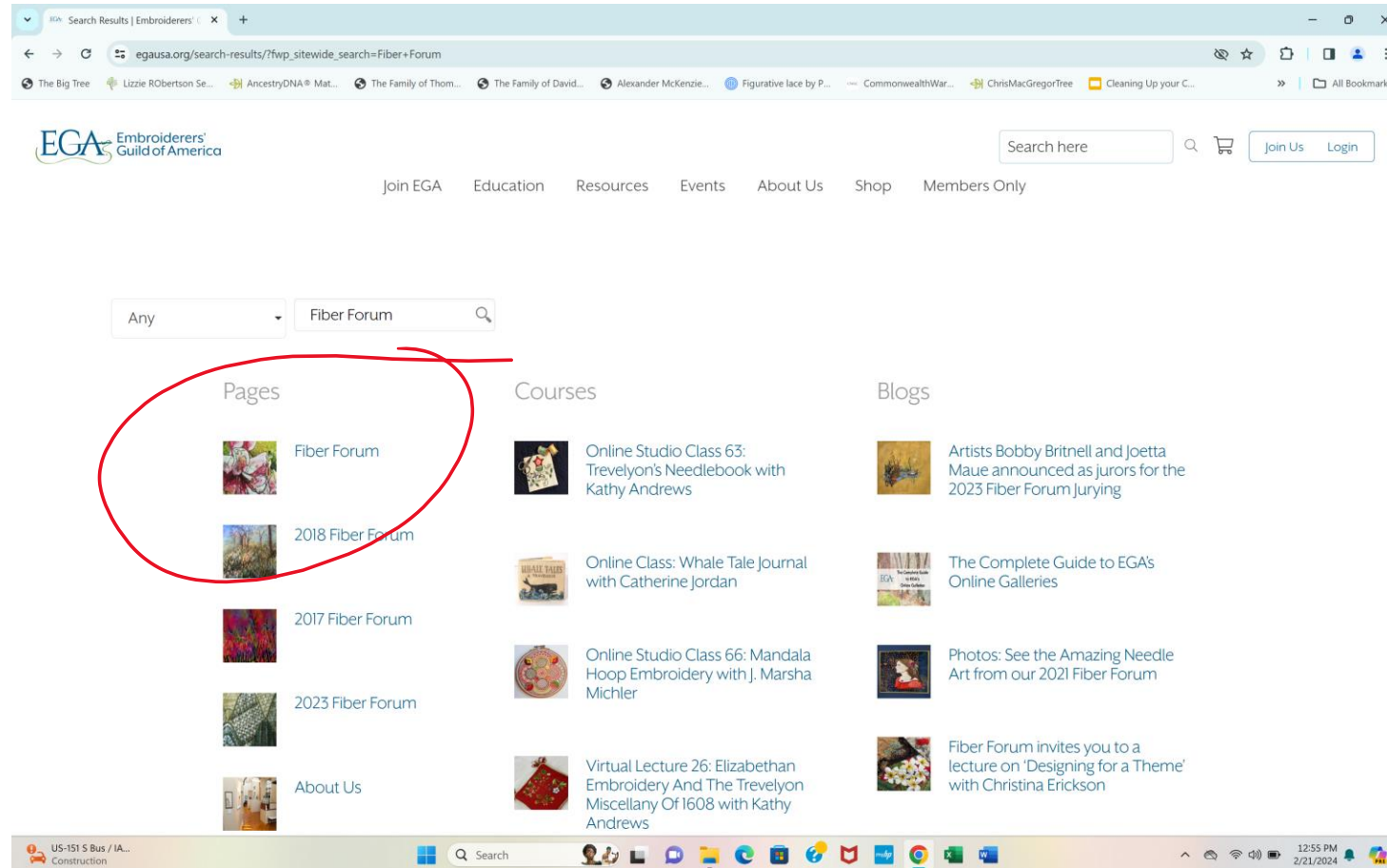


Tips for Fiber Forum Jurying

Go to EGAUSA.org then search for Fiber Forum



Select Fiber Forum



Scroll down to the section About Jurying

to find links to the **Jurying Procedures** information and the **Submission** form.

Print and/or download these files to your computer.

The screenshot shows the EGA Fiber Forum website. The browser address bar displays `egausa.org/fiber-forum/`. The website header includes the EGA logo, a search bar, and links for 'Join Us' and 'Login'. A navigation menu contains links for 'Join EGA', 'Education', 'Resources', 'Events', 'About Us', 'Shop', and 'Members Only'. The main content area features a paragraph about digital photo submissions with a link to 'See the 2023 Fiber Forum Gallery'. Below this, it states the membership fee is \$25.00 annually and can be paid online [here](#). It also lists membership options for 1, 2, or 3 years with their respective costs. A link 'Click here to Pay Fiber Forum Membership Dues' is provided. The 'About Jurying' section explains that jurying occurs in March of each year, with entries for 2024 due between March 1 and March 15, 2024. It includes links to download the '2024 Fiber Forum Jurying Submission Form' and the 'Jurying Procedures'. The 'Fiber Forum Friends' section mentions a donation of \$10. Red arrows are drawn on the page: one points to the 'About Jurying' section header, and another points to the '2024 Fiber Forum Jurying Submission Form' link.

EGA Embroiderers' Guild of America

Search here

Join Us Login

Join EGA Education Resources Events About Us Shop Members Only

digital photo submissions of a member's new work. This procedure encourages each person to set a creative challenge and attain personal goals. [See the 2023 Fiber Forum Gallery](#)

Upon acceptance, the membership fee is \$25.00 annually, and it can be paid online [here](#).

Members can join for 1, 2 or 3 years: 1 year for \$25; 2 years for \$45; 3 years for \$60. You may pay for 1 to 3 years, but not for more than the period of your current juried membership term. Fiber Forum dues are to be paid by May 31, with the same deadline as EGA membership dues.

[Click here to Pay Fiber Forum Membership Dues](#)

If you have questions, feel free to contact the forum chair Karen Schueler at fiberforum@egausa.org.

About Jurying

Jurying occurs in March of each year. Entries for 2024 must be received between March 1 and March 15, 2024. For your reference, [Click here](#) to download the 2024 Fiber Forum Jurying Procedures. Download the [2024 Fiber Forum Jurying Submission Form](#) here.

Fiber Forum Friends

Fiber Forum Friends is open to any interested EGA member for a donation of \$10, due on

Read the instructions carefully.

Note that the entry must be **completed** and the full view photo includes the frame and/or mat, or the edges of gallery wrap if that is the way you have finished the piece.

The next two parts of the presentation explain various aspects of the procedures in detail.



2024 FIBER FORUM JURYING PROCEDURES

Fiber Forum promotes embroidery as an art form through the exhibition of original works of exceptional merit. An annual jurying is held for EGA members who wish to join Fiber Forum; for Fiber Forum members who want to be re-juried; or for members who wish to have current work critiqued. Two independent jurors are selected each year to review and score the entries submitted. If your work attains a passing score, you are eligible to become a member of Fiber Forum (\$25 per year). You may submit digital images of one or two works only. Top-quality images are essential and the use of professional photographers is recommended. The jurying fee is \$30 per submitted work or \$60 for two. You may pay the fee online or by check. Everyone must complete a submission form for each entry. You have a choice of sending the images, entry form and artist statements on one jump drive, one CD or via email attachments.

Guidelines for submission:

1. The submitted work must be an original piece completed within the previous three years that will not be taught or proposed for a class until after the annual jurying process is completed. EGA's definition of original is "one which from the beginning is solely the creative product of the stitcher." Original work begun in a classroom situation but developed to a finished artwork can be submitted. A piece previously juried but not accepted may be re-submitted once within the time limit of three years. A piece previously juried-in may not be re-submitted.
2. Each submission requires an entry form and TWO images, one overall or full view from edge to edge (This includes mat and frame if there is one) and one detail of the work. For three-dimensional work, large size artwork (at least one side must measure 18"), and work done as a series, three images may be submitted. Images on the jump drive, CD, or sent via email should be in jpeg (JPG) format and all photos must be a minimum of 2000 pixels on the shortest side. Please title the images with the name of the piece, and indicate which view it is (e.g. GardenViews_full.jpg; GardenViews_detail.jpg). Using a permanent marker (no paper labels), label the jump drive or CD with '2024 FF Jurying', your name and email address. Jump drives and CDs WILL NOT BE RETURNED. Email instructions below.
3. An artist statement about each piece, limited to 100 words, is required. Please load this onto the jump drive or CD as a Microsoft Word document with the same title as the jpeg image of the artwork. (e.g. Garden Views.doc) or send via email as an attachment along with the images. Each email should only contain two images along with any word documents. More images per email will overload the jurying receiver's email program. If you know how to zip photos, you may send all photos and artist statement(s) in one zipped folder.
4. The following items can either be emailed to this address: aepoulson@charter.net.
(Label the subject line with **2024 FF Jurying**, and identify the source of the email by including your name in the letter.)
OR mailed through USPS to: Ann Poulson, Fiber Forum, Jurying Coordinator, 19814 Dawson Lane, Farmington, MN 55024
 - A. Jurying Fee:** Pay on line (see submission form) OR mail a \$30/\$60 check made out to Fiber Forum EGA
 - B. Entry Form(s):** Fill out and send via email OR can be mailed
 - C. Artist's Statement(s):** Can be sent to the above email address OR can be mailed
 - D. Photo Images:** Can be sent to the above email address OR can be downloaded onto a CD or jump drive (see labeling instructions in #2 above) and mailed
5. **Entries must be postmarked between March 1 and March 15, 2024.** Entries outside these dates will not be accepted. Entrants will be contacted if payment or images and statement are not received by the deadline or if the entry form is incomplete. (Please check your jump drive or CD to make sure the files can be opened). If the submitter returns the completed materials prior to the submission deadline, the entry will be considered for jurying. Please allow at least two months to receive the results of jurying.

Notice that this form has a direct link to the place on the EGA website where you pay the jurying fee if you choose to pay online.

Option 1.

You can print the jurying submission form, fill it out manually, and mail it in. Be sure that you sign it!

Option 2.

You can open the .pdf form on your computer, fill it out electronically, and email it. Notice the **red** mark on the form. This indicates an electronic signature.

If you have trouble with the electronic signature process, then print the form, sign manually, and mail the form in.

You may send your paperwork to Ann Poulson in multiple email messages.



2024 FIBER FORUM JURYING SUBMISSION FORM

Mail or email this entry form to Ann Poulson

Name EGA#
 Street
 City State Zip
 Daytime Phone E-mail

For FF members only: this submission is for: ☐ re-jurying into FF; or for ☐ jurors' critiques.
 (Juror's critiques will not extend your membership period)

I give permission to Fiber Forum, EGA to use these images in EGA publications, on EGA's website, and for educational purposes.

Signature:

Title of artwork for this entry

(Submit another entry form for a second artwork)

Select method by which you are sending payment

☐ I am paying jurying fee by mailing a check or money order for \$30/\$60 (payable to EGA Fiber Forum) posted between March 1 and March 15, 2024. **Please put EGA Member # on the check.** Mail to:
 Ann Poulson, Fiber Forum Jurying Coordinator, 19814 Dawson Lane, Farmington, MN, 55024

☐ I have paid online. Link to pay: <https://egausa.org/product/fiber-forum-jurying-fee>

Select method by which you are sending the images and statements to Ann Poulson

☐ I will mail a jump drive or CD with the images of artwork, the artist statements and a printed entry form postmarked on or between March 1-15, 2024.

☐ I will be emailing the images and artist statement as attachments between March 1-15, 2024.

FORMAT of ARTIST STATEMENT (FF reserves the right to edit statements when necessary)

Please include the following information on your artist statement:

TITLE of ARTWORK: (must agree with title on image)
 Your name:
 Photographed by: (artist, photographer or photo studio--necessary for photo credit)
 Work completed in: (year)
 Techniques and materials, etc.: (basic information, not brand names)
 Design size:
 Total dimensions: (This includes the mat and frame if there is one)

Followed by the

ARTIST STATEMENT (limited to 100 words) that should refer to the inspiration, challenge, or intent of your art rather than a description of technique or materials.

Tips for Entering Work in Fiber Forum

Electronically Signing Submission Form

Why- EGA Headquarters

- ❖ Promotional
- ❖ Publish on Website and NeedleArts Magazine
- ❖ Publish in Newsletter

Can't do it –Snail Mail

Postmark Counts – March 1st – March 15th

Images

Size

Size Matters - Jurors

How to Check Size

Windows

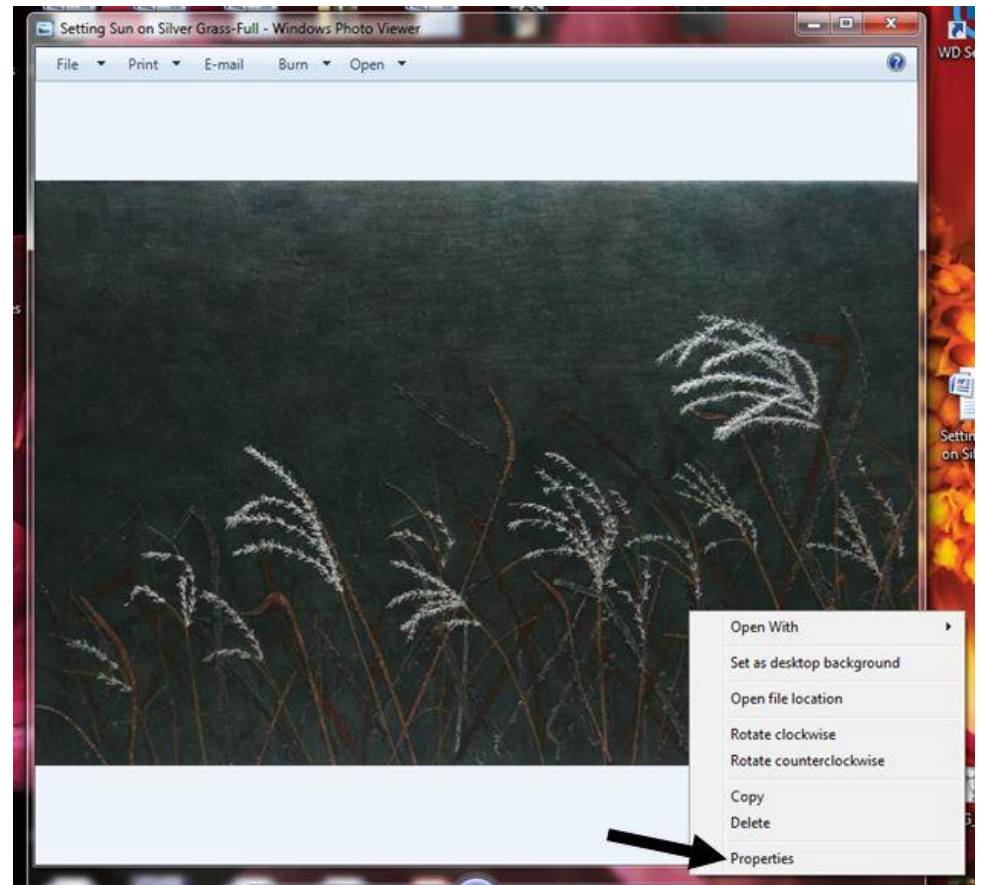
Method One

- ❖ Move Cursor on top of Photo
- ❖ Wait till box shows

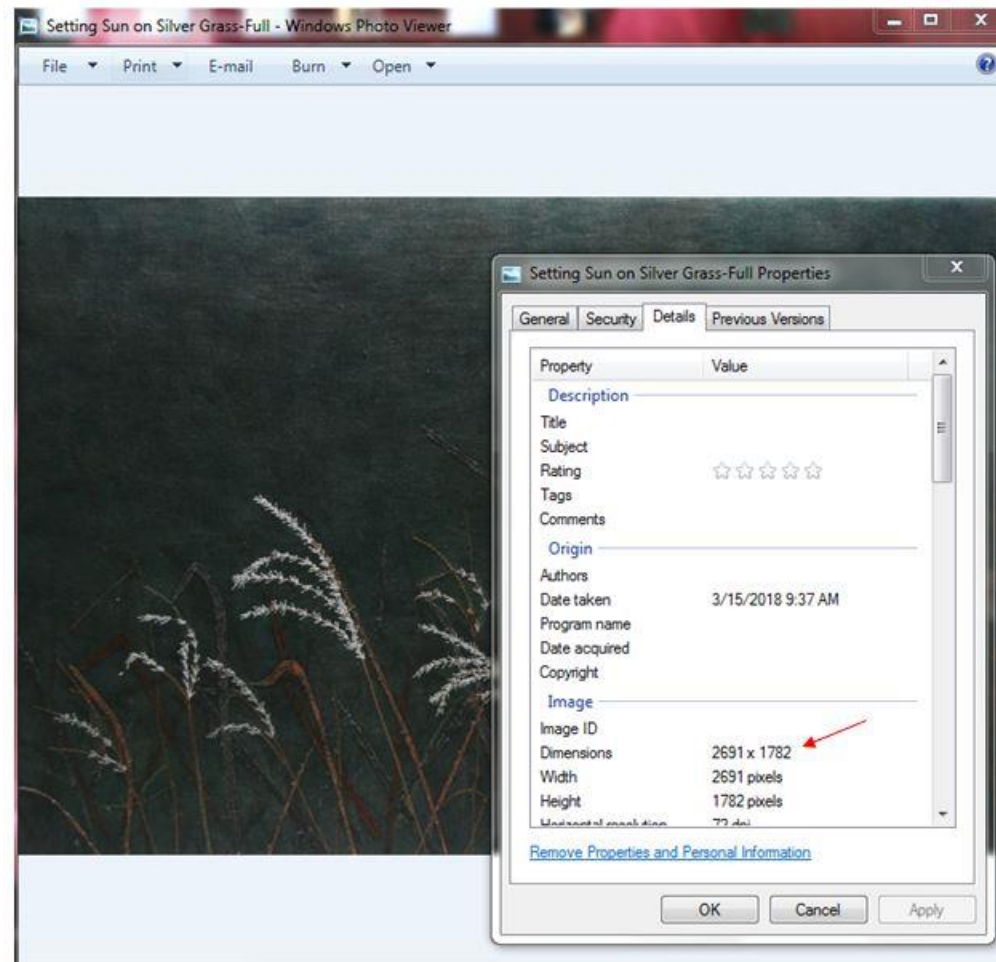


Second Method

- ❖ Click on the image once to select it
- ❖ Right click
- ❖ Scroll down to Properties



- ❖ Click on Properties
- ❖ From the top tabs Choose and click on -Details

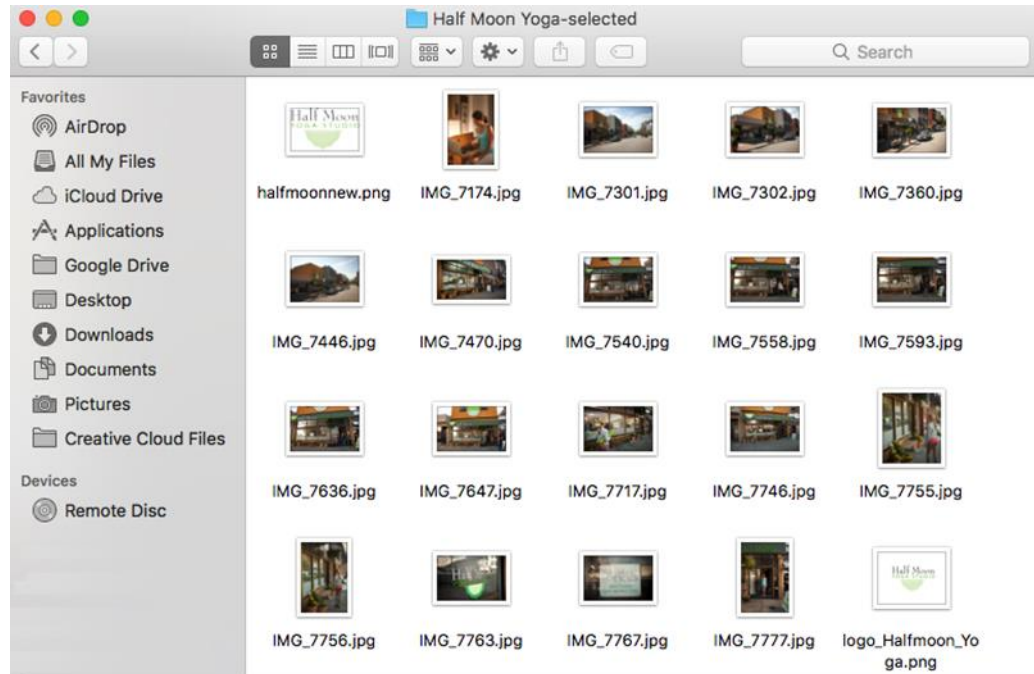


On a Mac

1. Click Finder on your Dock.



2. Find the image you want to check

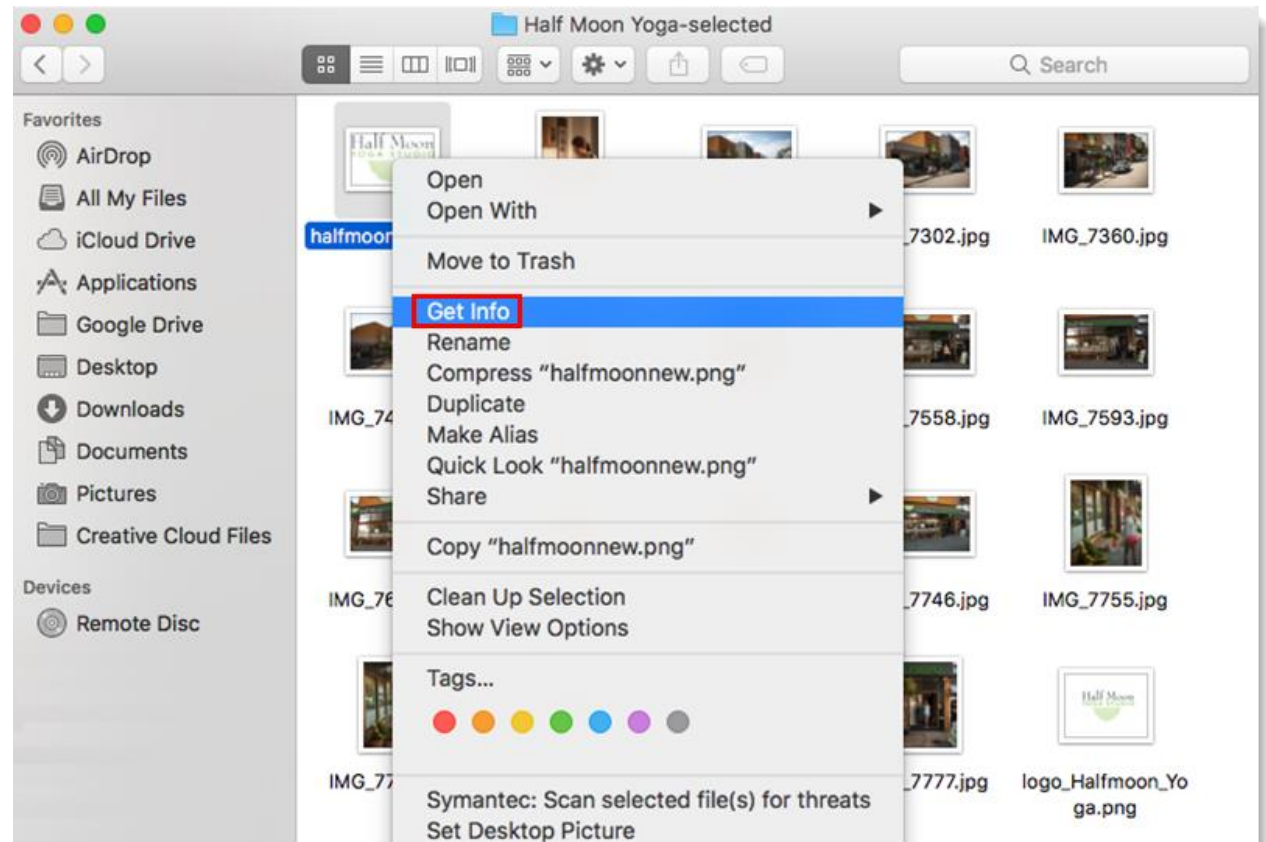


3. Control + Click on your image

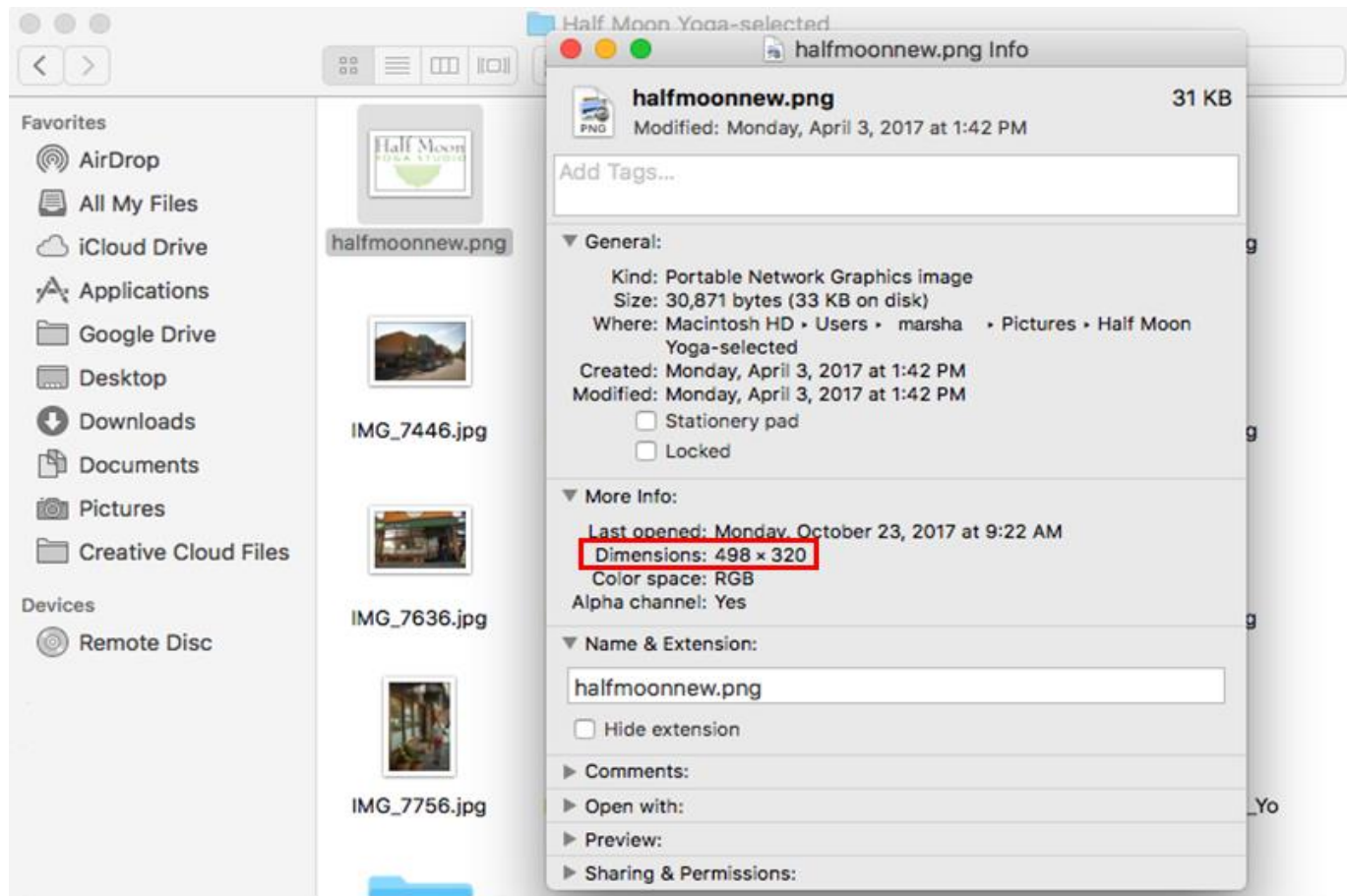
A menu appears

4. Click - Get Info.

A window appears

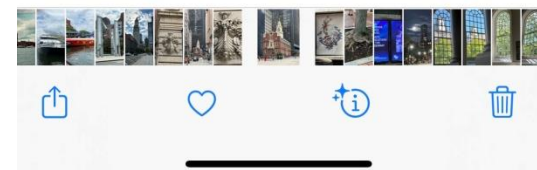
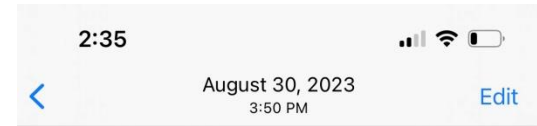


5. Expand the **More Info** by clicking on the down arrow in front of the words More Info



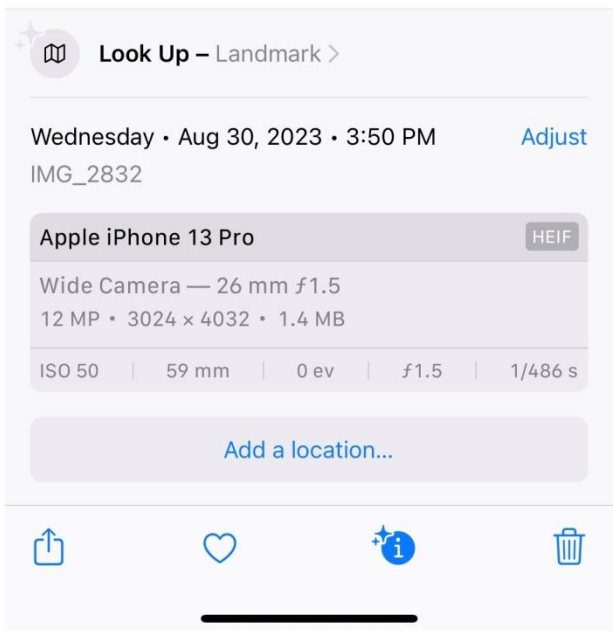
On an iPhone

- ❖ Open Photos
- ❖ Select the Picture
- ❖ Underneath the Photo
- ❖ 4 icons
- ❖ Click on the i in a circle





Add a Caption



❖ Second line under
Apple iPhone
has the dimensions

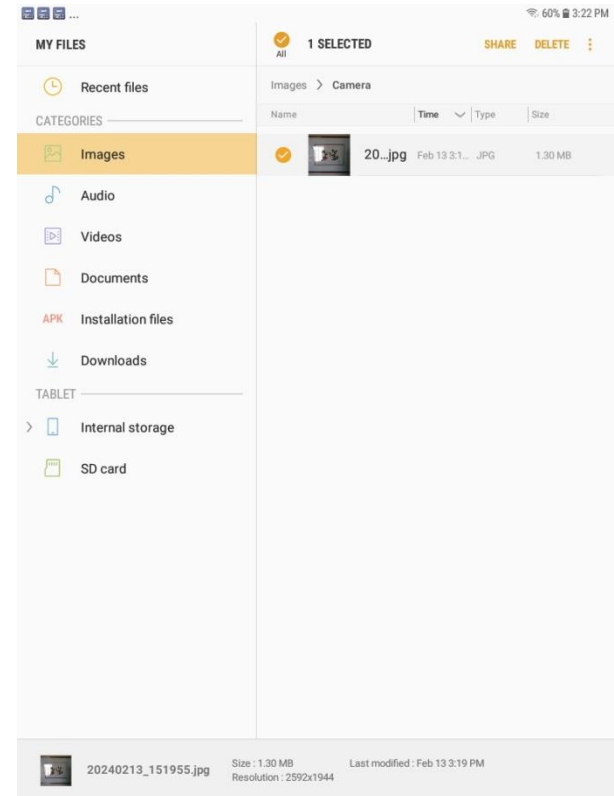
Samsung picture properties

MY FILES shows the information on this Android tablet.

Look at the bottom to see the pixel size.

Resolution is 2592 x 1944.

This image is too small to submit for jurying



Naming Photos

How to Change the Name Windows - Two Methods

Method One

- ❖ Click on Photo to Select It
- ❖ Pause



- ❖ Click on Current Name
It is highlighted in blue
- ❖ Type New Name

Method Two

❖ Click on Photo to Select

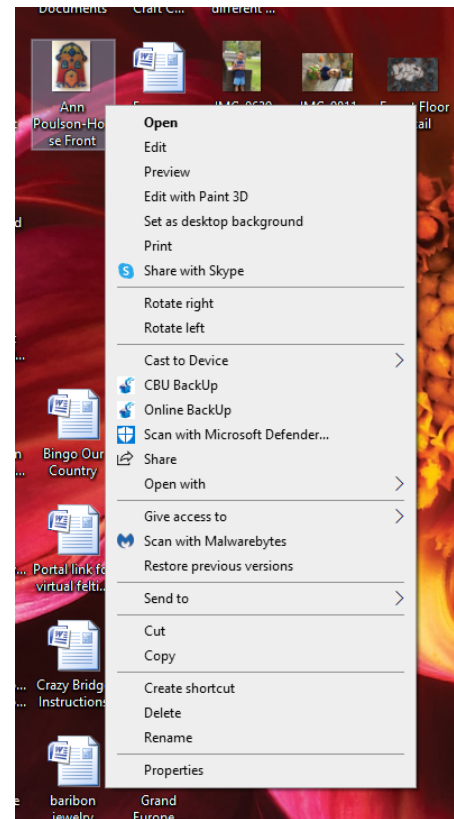


❖ Right Click on Photo
A menu will drop down

❖ Select Rename

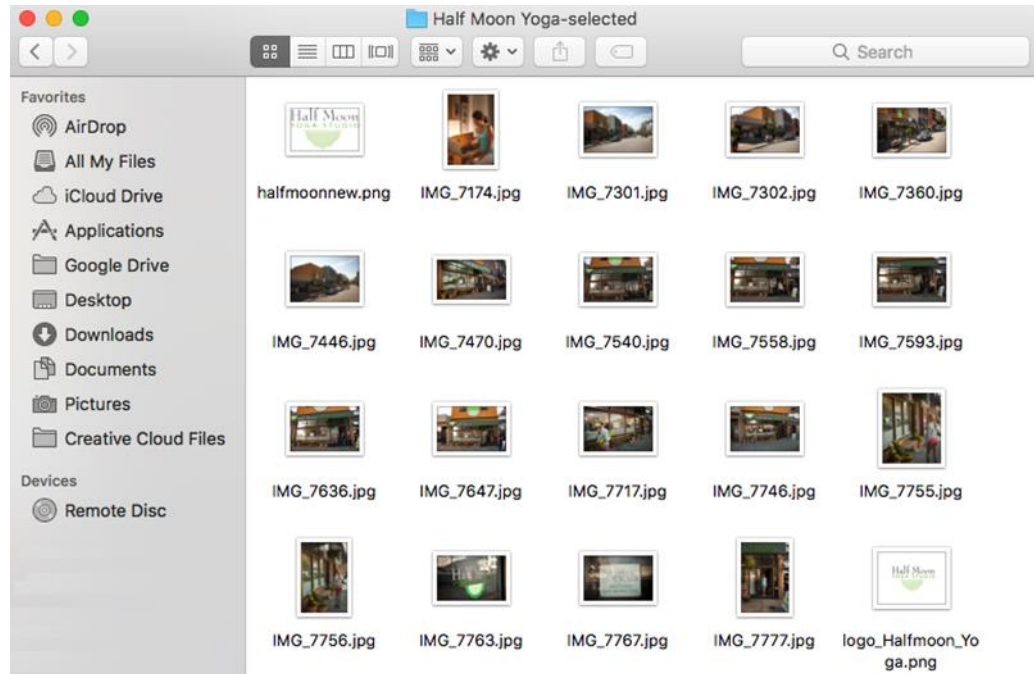
❖ Name under photo
becomes blue or
highlighted

❖ Type the new name



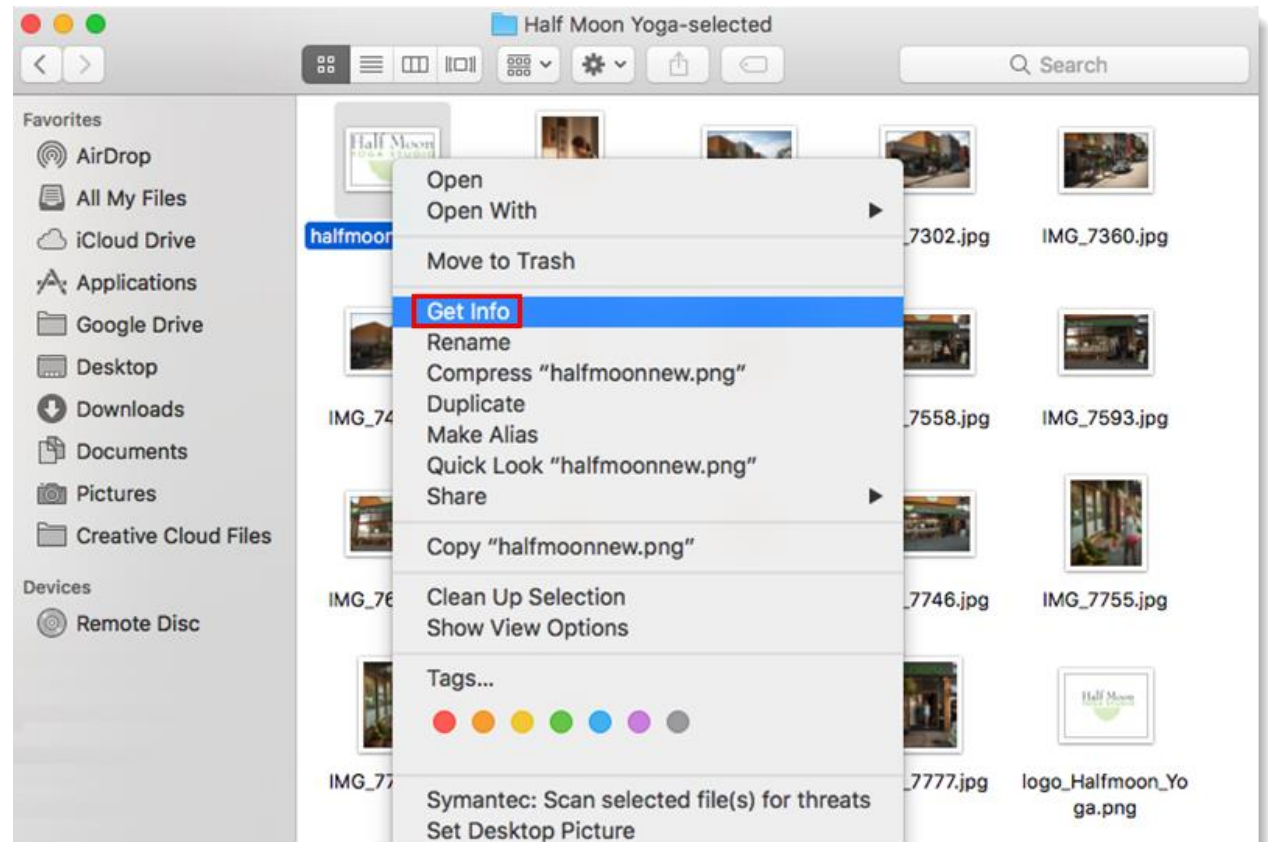
On a Mac

1. Click Finder on your Dock.
2. Find the image you want to check



3. Control + Click on your image
a menu appears

4. Right below Get Info is Rename

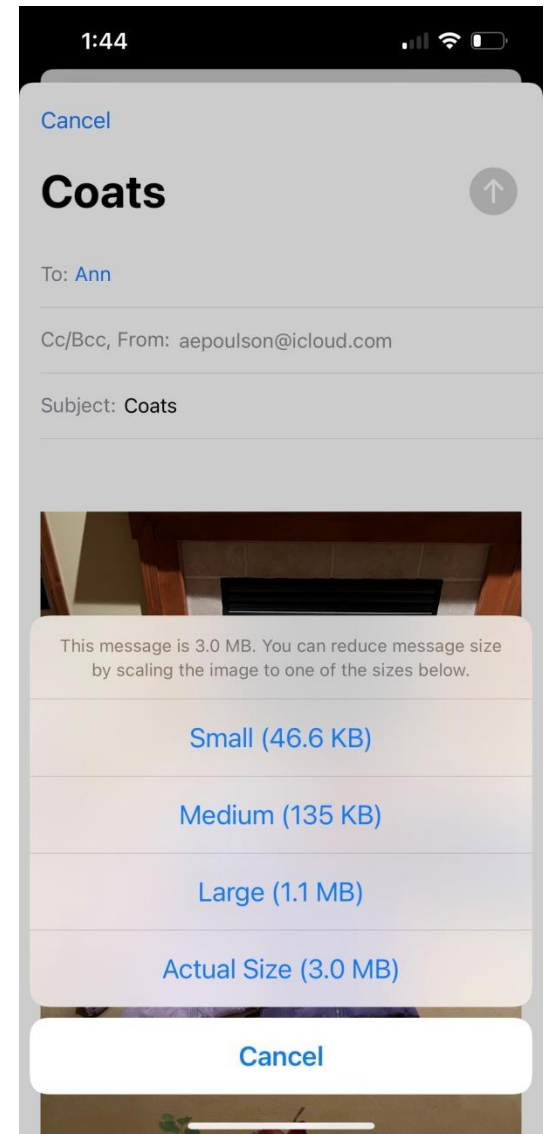


Sending Photos from Phone to Computer

- ❖ Select Photo
- ❖ At Bottom click on Box with Arrow
The Share icon



- ❖ Choose Email
- ❖ Fill in To: and Subject:
- ❖ Click Send
- A window drops down
- ❖ Choose Actual Size



Judges will be looking at your pixels!

- Pixels in a photograph correspond to the boxes in a cross stitch pattern.
- The size of a cross stitch embroidery depends on the count of the fabric it is stitched on.
- Thousands of tiny pixels on a screen blend together to form a picture you see.
- Judges need pictures that have at least **2000 pixels** on a short side so that if they look closer at a picture it doesn't become blurry or look like tiny colored squares.
- Best scores for your entries depend on the quality of the pictures you submit.

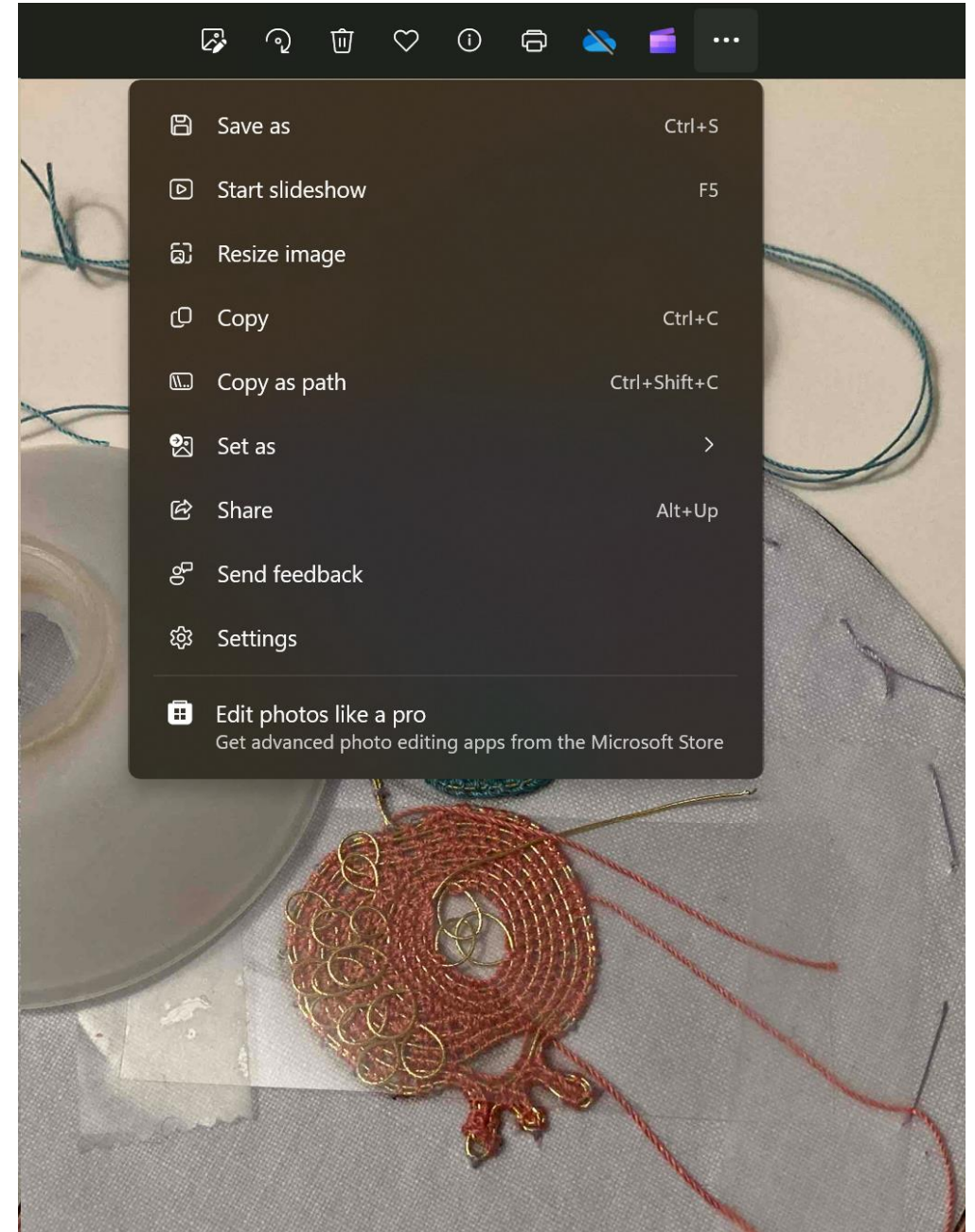
Filenames & File types

- Taking a digital picture makes a file with a name like IMG_007.jpg .
- IMG_007 is referred to as the filename.
- The file type is jpg, pronounced jpeg.
- The file type tells an app the format of the file. App is short for application, aka software program.
- There are several different file formats for pictures.
- Make the photograph in the jpg format so that you do not have to change file format which might decrease the quality of your photograph.

Changing the file type

If your photographs are in a different file format, you can use an app like Photos on a Windows computer to change the file format to JPG.

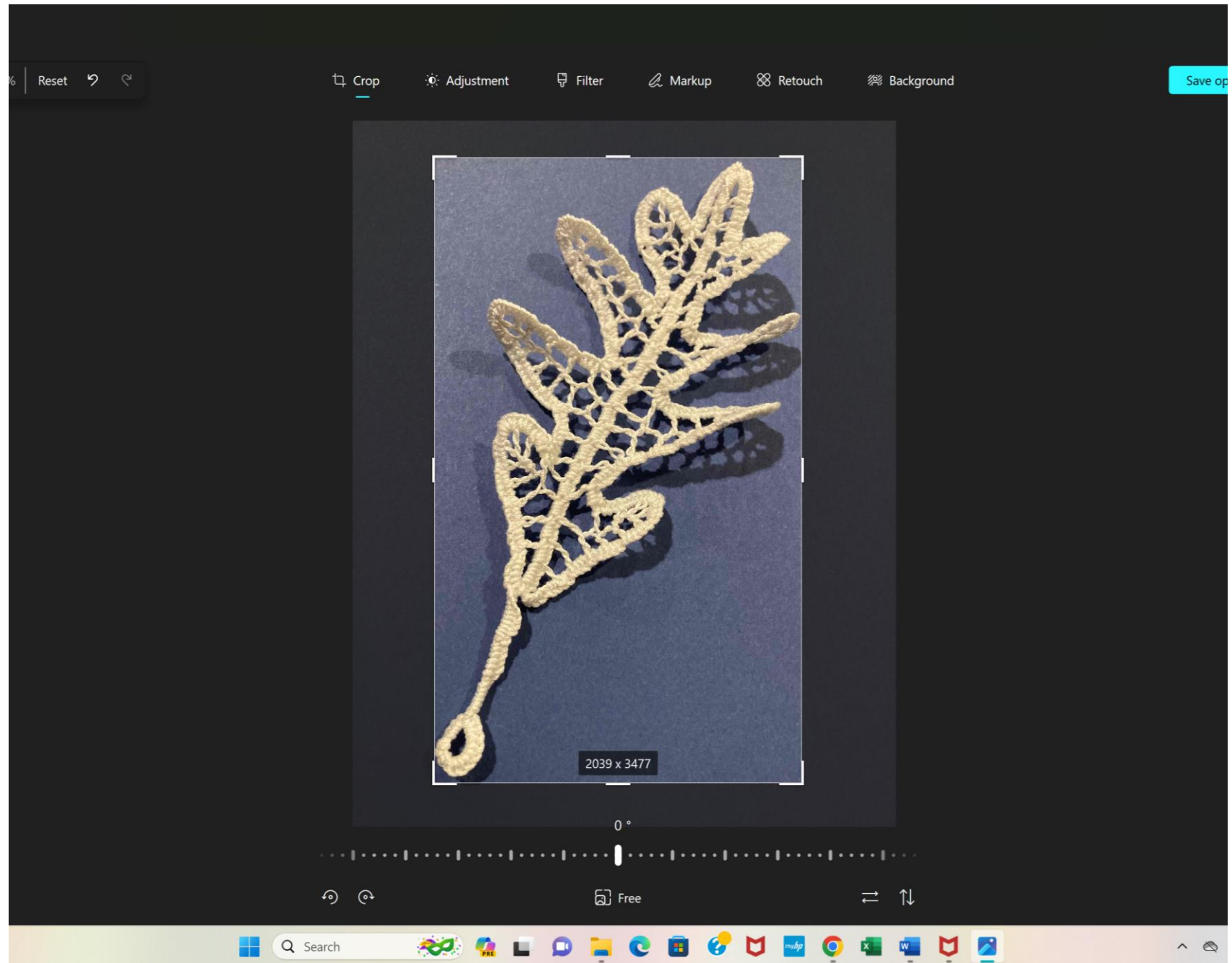
- Open the file with Photos.
- Click on the three dots in the top of the window.
- Select Save As.
- Select JPG for the Save As Type.
- Select the location to save the file.
- Click Save then check the pixels to make sure you have at least 2000 on the short side.



Cropping in the Photos App

Notice that the size in pixels is shown in the center of the bottom of the image.

Make sure you have at least 2000 in each direction.



Do not use Crop to make a detail photograph from a full view. Take a closeup picture.

Consequences of cropping a file:

- If you start with a picture that is 3024 x 4032 pixels and crop it so that only the lower half of the right half is saved, then the new dimensions will be $\frac{1}{2}$ of 3024 by $\frac{1}{2}$ of 4032 or 1512 x 2016 pixels.
- This does **not** meet the 2000 pixels requirement for jurying.

Image Proportions

- Set the camera at the highest resolution (most pixels) and make sure you have at least 2000 pixels on the shortest side. If you have a square or narrow entry, it might not fit well on the screen.
- To minimize or avoid cropping and losing pixels, select the image proportion that best fits your entry. 1:1 is square. 16:9 is narrow. Make sure you have at least 2000 pixels on the shortest side.
- Read the manual or click through the device settings for the choices of proportions or the pixel dimensions of images.
- On an iPhone, prepare to take a picture. Select the ^ in the center above the image, and the proportion will appear on the center bottom. Select center bottom, then the iPhone displays three choices: 4:3, Square (1:1), and 16:9. Find the choice that best fits your entry by selecting each option and looking at the way your entry fits the screen.
- For one camera, you step through the Function Settings and see the options are 16:9, 3:2, 4:3, 4:5, and 1:1.
- For another camera, W (wide) is 5152 x 2896, L (large) is 5152 x 3648 and M1 (medium) is 3648 x 2736. M2 and S don't have enough pixels.
- For less stress and best results, find an affordable photographer.

Photography for Fiber Forum Jurying

- The guidelines are different for EGA Through the Needle's Eye or gallery jurying.
- ALWAYS read the rules carefully. Some events may reject your submission without consideration or notifying you if you don't follow directions.
- The whole entry must be visible in the full photograph, including any framing.



- Edges of a “gallery wrap” must be included in the full photograph.
- A “straight on” view is usually best for a single 2-dimensional embroidery.
- A 3-dimensional entry, an entry with multiple pieces, or an entry at least 18” in one dimension may have 3 photographs.



- A tripod helps steady the camera or phone to make it easier to get a clear focus and straight on view.
 - Take a picture and check it.
 - Adjust camera position and/or lighting.
 - Repeat.
- Judges comment on images that are not sharp.



- If the background appears in the picture, choose a simple background that does not distract from your entry.
- For example, the wood grain from a table, wall or floor in the background may distract. White background would be better.
- The image should have the background cropped to just short of the edges of the frame. The less background showing the better. This means taking photographs of the artwork that nearly fills the display. Otherwise all that you crop away takes away the size of the image.
- **Always** avoid shadows and reflections from **other** things in the room.
- Shadows can come from the person taking a picture especially if the lighting is overhead.
- Reflections can come from pictures on other walls that are framed with glass.
- Shadows and reflections may change as the sun moves through the sky.



- If your entry is **highly** textured, there may be tiny shadows that result from the angle at which light hits the texture. These tiny shadows give you visual cues about the texture of the object.
- The angle of the camera and the lighting makes a difference when you want the shadows to show the texture of the entry.



- Your light sources (sunlight and light bulbs) will make a difference in the appearance of your entry.

- Sunny vs cloudy vs foggy days
- Incandescent vs fluorescent vs LED lights



- If the white in your pictures appears to be cream, you can adjust this by using the white color balance procedure in your camera.
- This procedure involves taking a picture of white paper or mat board. Read the manual for the specifics for your camera.

- Whether the light shines directly or indirectly on your entry will make a difference in the photograph.



- “Best lighting” is even, indirect sunlight.
- Climate and weather may not cooperate when you want to take pictures outdoors, in a sunroom, or on a porch.

A light box device can be used to isolate and focus light on the object you are photographing. They come in a variety of sizes and styles and brands. There are reviews available that compare the features of light boxes. Prices vary.



NOTE: This is not the kind of light box you use for tracing.

