

**Welcome to The Right Stitch,  
The Embroiders' Guild of America  
Greater Pacific Region  
Seminar 2024**



Logo stitched by: **Tamra Donnelly**





# Welcome

## Welcome to GPR Seminar 2024!

Welcome to, **The Right Stitch**, GPR seminar 2024. I am so excited about all of the wonderful teachers and classes chosen for our seminar. We have a variety of techniques for you to try. This might be the year to challenge yourself and try a new technique that you have been thinking about. We have a fun evening event planned with, **Stitch Bingo**, (thank you Robin). Check out the instructions on the website to stitch your bingo card. I look forward to seeing everyone, catching up with friends and meeting new ones, who share the common love of needlework.

See all of you in sunny San Rafael.

  
Chair, GPR Seminar 2024

We hope you will join us at The Right Stitch, Greater Pacific Region's 2024 Seminar. It is open to all members of EGA, not just GPR, so please spread the word. Not a member, join EGA and come learn with us! Stitching with friends, new and old. Learning new forms of embroidery in addition to all the wonderful hints and tips from National teachers. The rooms are all suites and breakfast is included; as is a social hour. Fun events and all in a lovely newly renovated hotel with easy access from San Francisco airport. Mark your calendars for July 19-25, 2024 and registration opens January 1, 2024. Check back on the website often as we will be posting more fun and special opportunities as details are finalized!

  
Region Director Greater Pacific Region







# Schedule

## Tentative Schedule

The following schedule is provided to help you plan your time during Seminar. The final schedule, with locations for classes and activities, will be provided in the student handbook at Seminar.

<b>Friday, July 19</b>	Registration	2:00 pm - 5:00 pm
	No Host Reception	6:00 pm - 7:00 pm
	Welcome Banquet	7:00 pm - 9:00 pm
<b>Saturday, July 20</b>	Seminar Central: Information Desk, Exhibits & More	7:30 am - 5:30 pm
	Silent Auction	7:30 am - 5:30 pm
	Classes	8:30 am - 4:30 pm
	Merchandise Night	6:30 pm - 8:30 pm
<b>Sunday, July 21</b>	Seminar Central: Information Desk, Exhibits & More	7:30 am - 5:30 pm
	Silent Auction	7:30 am - 5:30 pm
	Classes	8:30 am - 4:30 pm
	Teacher Showcase	4:30 pm - 5:30 pm
	Stitch Bingo	7:00 pm - 9:00 pm
<b>Monday, July 22</b>	Seminar Central: Information Desk, Exhibits & More	7:30 am - 5:30 pm
	Silent Auction	7:30 am - 5:30 pm
	Classes	8:30 am - 4:30 pm
	Meet up for Education Outreach discussion	Noon - 1:00 pm
	Stitching in your PJ's	7:30pm - 9:30pm
<b>Tuesday, July 23</b>	Seminar Central: Information Desk, Exhibits & More	7:30 am - 5:30 pm
	Silent Auction	7:30 am - 5:30 pm
	Classes	8:30 am - 4:30 pm
<b>Wednesday, July 24</b>	Seminar Central: Information Desk, Exhibits & More	7:30 am - Noon
	Silent Auction	7:30 am - Noon
	Classes	8:30 am - 4:30 pm
	Silent Auction Pickup	4:30 pm - 5:30 pm
	No Host Reception	6:00 pm - 7:00 pm
	Farewell Banquet	7:00 pm - 9:00 pm

Banquets are ticketed events and are included in your registration depending on whether you are registered for that day's activities. See the detailed registration instructions, available one week prior to the start of registration, for the description of the fees and which banquets are included with your registration.



# General Class Information

## Read the class descriptions carefully!

Photographs are helpful in some instances, but they cannot describe the technique, materials, level of difficulty, or objective of the class. Every effort has been made to carefully and thoroughly describe each class. Rely on the class description as the primary guide in choosing your class(es).

To assist you in selecting a class at an appropriate skill level, please be familiar with the following EGA level definitions. Remember, the definitions pertain to the technique being taught, not your overall skill level.

**Basic** . . . . .No experience with the technique being taught.

**Intermediate** . . . . .Knowledge of basic stitches and materials and their uses in the technique being taught.

**Advanced** . . . . .Ability to execute simple and difficult stitches in the technique being taught, knowledge of color and design which will allow for exploration and creativity.

**All Levels** . . . . .Suitable class for all levels of experience in the technique being taught.

Some classes request the student bring “usual stitching supplies,” which refers to those items of general use that all students will have available in their own supplies. The light in the classrooms is not always sufficient for stitching and it is highly recommended that students bring **Battery operated lights**. See Frequently Asked Questions (FAQs) on page 38 for more details.

All classes meet for a morning and afternoon session, with 15 minute breaks during each session. There is a two hour lunch break, which provides you enough time to eat lunch, see the exhibits, and visit with friends.

Morning Session . . . . . 8:30 am - 11:30 am

Morning Break . . . . . 10:00 am - 10:15 am  
(approximately)

Lunch Break . . . . . 11:30 am - 1:30 pm

Afternoon Session . . . . . 1:30 pm - 4:30 pm

Afternoon Break . . . . . 3:00 pm - 3:15 pm  
(approximately)



# List of Classes Offered

Days	Class #	Class Name	Teacher	Page
Sat / Sun	201	Crown of Pearls	Eileen Bennett	7
Sat / Sun	202	Ode to the Honeybee	Celeste Chalasani	8
Sat / Sun	203	Monet Kimono	Toni Gerdes	9
Sat / Sun	204	Porthole	Wendy Innes	10
Sat / Sun	205	A Garden View	Deborah Mitek	11
Sat / Sun	206	Highland Circle	Kathy Rees	12
Sat / Sun	207	The Dickcissel's Prairie Ort Box	Canby Robertson	13
Sat / Sun	208	Starfish Heart Pendant	Amee Sweet-McNamara	14
Sat / Sun / Tues / Wed	401	Twice the Taste	Melinda Sherbring	15
Sat / Sun / Tues / Wed	402	Lanterns	Kay Stanis	16
Monday	101	Strawberry Fair Sampler	Eileen Bennett	17
Monday	102	Fall Daze	Celeste Chalasani	18
Monday	103	Noel	Toni Gerdes	19
Monday	104	Wildflower Fields / Monogram	Deborah Mitek	20
Monday	105	Holiday Box	Kathy Rees	21
Monday	106	Boxes Galore!	Canby Robertson	22
Monday	107	Flecked Flowers in Hearts	Melinda Sherbring	23
Monday	108	Pinwheel Pleasure	Kay Stanis	24
Monday	109	Indulgence Earrings	Amee Sweet-McNamara	25
Mon / Tues / Wed	301	Daffodils and Violas	Wendy Innes	26
Tues / Wed	251	Little Red Strawberries Sampler	Eileen Bennett	27
Tues / Wed	252	Berried Treasure	Celeste Chalasani	28
Tues / Wed	253	Larry the Patchwork Lion	Toni Gerdes	29
Tues / Wed	254	Butterfly Sunset	Deborah Mitek	30
Tues / Wed	255	Beaded Bermuda Reef	Kathy Rees	31
Tues / Wed	256	Diminutive Rose	Canby Robertson	32
Tues / Wed	257	Aperture	Amee Sweet-McNamara	33

See page 6 for a calendar view of the class schedule.

See the teacher information starting on page 34.



# Day at a glance

List of Classes Offered - Calendar View					
Teacher	Saturday 7/20	Sunday 7/21	Monday 7/22	Tuesday 7/23	Wednesday 7/24
<b>Eileen Bennett</b>	<b>201</b> Crown of Pearls Sampler Intermediate - Advanced Pulled Thread	<b>201</b> Crown of Pearls Sampler Intermediate - Advanced Pulled Thread Kit Fee \$100	<b>101</b> Strawberry Fair Sampler Intermediate - Advanced Counted Thread Kit Fee \$55	<b>251</b> Little Red Strawberries Sampler Intermediate - Advanced Counted Thread	<b>251</b> Little Red Strawberries Sampler Intermediate - Advanced Counted Thread Kit Fee \$88
<b>Celeste Chalasani</b>	<b>202</b> Ode to the Honeybee Intermediate Stumpwork	<b>202</b> Ode to the Honeybee Intermediate Stumpwork Kit Fee \$115	<b>102</b> Fall Daze Basic Stumpwork Kit Fee \$35	<b>252</b> Berried Treasure Intermediate Stumpwork	<b>252</b> Berried Treasure Intermediate Stumpwork Kit Fee \$85
<b>Toni Gerdes</b>	<b>203</b> Monet Kimono Intermediate Needlepoint	<b>203</b> Monet Kimono Intermediate Needlepoint Kit Fee \$190	<b>103</b> Noel Intermediate Needlepoint Kit Fee \$105	<b>253</b> Larry the Patchwork Lion Intermediate Needlepoint	<b>253</b> Larry the Patchwork Lion Intermediate Needlepoint Kit Fee \$185
<b>Wendy Innes</b>	<b>204</b> Porthole Intermediate Stumpwork	<b>204</b> Porthole Intermediate Stumpwork Kit Fee \$75	<b>301</b> Daffodils and Violas Intermediate Stumpwork	<b>301</b> Daffodils and Violas Intermediate Stumpwork	<b>301</b> Daffodils and Violas Intermediate Stumpwork Kit Fee \$60
<b>Deborah Mitek</b>	<b>205</b> A Garden View Basic - Intermediate Silk Ribbon Embroidery	<b>205</b> A Garden View Basic - Intermediate Silk Ribbon Embroidery Kit Fee \$130	<b>104</b> Wildflower Fields / Monogram All Levels Silk Ribbon & Canvas \$95	<b>254</b> Butterfly Sunset All Levels Silk Ribbon Embroidery	<b>254</b> Butterfly Sunset All Levels Silk Ribbon Embroidery Kit Fee \$125
<b>Kathy Rees</b>	<b>206</b> Highland Circle Intermediate Counted Canvas	<b>206</b> Highland Circle Intermediate Counted Canvas Kit Fee \$115	<b>105</b> Holiday Box Basic - Intermediate Counted Canvas \$59	<b>255</b> Beaded Bermuda Reef Intermediate Counted Canvas / Beads	<b>255</b> Beaded Bermuda Reef Intermediate Counted Canvas / Beads Kit Fee \$110
<b>Canby Robertson</b>	<b>207</b> The Dickissel's Prairie Orts Box Intermediate - Advanced Surface Embroidery	<b>207</b> The Dickissel's Prairie Orts Box Intermediate - Advanced Surface Embroidery Kit Fee \$155	<b>106</b> Boxes Galore! All Levels Box Construction \$65	<b>256</b> Diminutive Rose Intermediate Crewel	<b>256</b> Diminutive Rose Intermediate Crewel Kit Fee \$115
<b>Melinda Sherbring</b>	<b>401</b> Twice the Taste Intermediate Elizabethan Raised-work	<b>401</b> Twice the Taste Intermediate Elizabethan Raised-work	<b>107</b> Flecked Flowers in Hearts All Levels Flecked Blackwork \$55	<b>401</b> Twice the Taste Intermediate Elizabethan Raised-work	<b>401</b> Twice the Taste Intermediate Elizabethan Raised-work Kit Fee \$85
<b>Kay Stanis</b>	<b>402</b> Lanterns Intermediate Silk & Metal	<b>402</b> Lanterns Intermediate Silk & Metal	<b>108</b> Pinwheel Pleasure Beginner - Intermediate Silk & Metal \$52	<b>402</b> Lanterns Intermediate Silk & Metal	<b>402</b> Lanterns Intermediate Silk & Metal Kit Fee \$85
<b>Amee Sweet-McNamara</b>	<b>208</b> Starfish Heart Pendant Basic - Intermediate Soutache & Beads	<b>208</b> Starfish Heart Pendant Basic - Intermediate Soutache & Beads Kit Fee \$120	<b>109</b> Indulgence Earrings Basic Bead Embroidery w/Shibori Ribbon \$70	<b>257</b> Aperture Necklace Basic - Intermediate Soutache & Bead Embroidery	<b>257</b> Aperture Necklace Basic - Intermediate Soutache & Bead Embroidery Kit Fee \$85



# 201

## Crown of Pearls Sampler

Eileen Bennett

TWO DAY CLASS • Saturday / Sunday • 7/20 & 21

### Project notes



### Class Description

The ultimate lace gallery! Eighty-one stitches and patterns showcase your skill and provide a lasting, heirloom-quality needlework reference. If you ever need a delicate filigree, you are sure to find it here. And once you take this class, you will truly be adept at creating openwork patterns—expertly and fearlessly!

The centerpiece of this 4-½-inch by 13-inch design is an ancient crown pattern embellished with luminous pearl beads. Around the crown are blocks with eight categories of pulled work stitches, except for one block that is set aside for a graceful initial—yours! Variations of the pulled-thread stitches include backstitch, double backstitch, buttonhole, cross, eyelet, four-sided, satin and straight.

As you master the techniques, Eileen will share with you both the history of pulled work and an extensive bibliography that she has developed through years of studying this elegant technique. There are 82 pulled thread stitches on this piece.

Eileen's book, *A Notebook of Pulled Thread Stitches* is also included with this class.

### Project / Class Information

Pre-work . . . . . No

Kit fee . . . . . \$100

Design area . . . . . 7.1" wide x 15.1" high

Technique . . . . . Pulled Thread, Cross Stitch and have had experience working on linen fabric.

Proficiency . . . . . Intermediate /Advanced

Kit contents . . . . . 18 ct. white mono canvas, instructions, needles and case, photo, and all threads to complete project.

### In addition to the usual stitching supplies, student to bring

pencil or pen for notes, 12" x 16" stretchers bars ASSEMBLED, tacks or staples, scissors for cutting threads (silk, metallics and others), a laying tool, floor or table stand or frame weight to stabilize your piece while working, mini flat-iron (optional), floss-away bags (optional), a 4H (hard lead) pencil or an air-disappearing purple pen for drawing on canvas (optional), and a battery powered lighting / magnification if needed.

# 202

## Ode to the Honeybee

Celeste Chalasani

TWO DAY CLASS • Saturday / Sunday • 7/20 & 21

### Project notes



### Class Description

Where would we be without the honeybee? Succulent strawberries, juicy blackberries and sweet blueberries are just a few of our favorite fruits that rely on pollinators such as the honeybee. In turn, the honeybee needs a "balanced diet" and depends on us to plant a variety of flowers. Create your own ode to the honeybee as you employ Contemporary Stumpwork techniques including three types of padding, wired slips and needlelace. Your kit includes the fabric, threads, beads, wires and needles to embroider the sampler. Left handed instructions available upon request.

### Project / Class Information

Pre-work . . . . . Students will transfer the design to their background fabric.

Kit fee . . . . . \$115

Design Area . . . . . 5" x 7"

Technique . . . . . Stumpwork

Proficiency . . . . . Intermediate, experience with surface embroidery.

Kit contents . . . . . Instructions, silk shantung, cotton fabric, stranded silk and cotton threads, beads, felt, 33 gauge wrapped wire, and needles.

### In addition to the usual stitching supplies, bring

Students will also need: 12" x 12" Evertite frame or stretcher bars; two 4" embroidery hoops; wire cutters; 6" ruler with both English and metric markings; tweezers; acid free wide tip marking pens (green and blue); acid free glue stick; white tissue paper; masking tape; mechanical pencil or pigma pen; small sharp scissors; scissors for cutting paper; cream colored sewing thread; needle puller; needle threader; and usual stitching supplies. Magnification and good lighting is highly recommended. Optional: a doodle cloth to practice stitches.



# 203

## Monet Kimono

Toni Gerdes

**TWO DAY CLASS • Saturday / Sunday • 7/20 & 21**

### Project notes



### Class Description

Inspired by the beautiful Impressionist paintings of Giverny by Claude Monet this is the seventh in the Artist's series of kimonos following the previous kimonos: The Wright Kimono, Mackintosh Rose Kimono, Klimt Kimono, O'Keeffe Kimono, Starry Starry Night Kimono, and Kubota Kimono. This kimono features the bridge at Giverny, France along with the peaceful lily pond and gardens that Monet painted many times. The use of painterly stitches for this beautiful landscape will be created with emphasis on shading with the bridge to be done in a Raised Stem Stitch technique. Using many different silks, with some added metallics for highlights will bring the light to this rendition of Monet's work. This intermediate level design will be stitched on 18ct. white Mono canvas. The design can be done as the original, a kimono, or as a rectangle (with some design changes by student).

### Project / Class Information

Pre-work . . . . . No

Kit fee . . . . . \$190

Design area . . . . . 8" wide x 11.5" high

Technique . . . . . Canvas Embroidery - Needlepoint

Proficiency . . . . . Intermediate

Kit contents . . . . . 18 ct. white mono canvas, instructions, needles and case, photo, and all threads to complete project.

### In addition to the usual stitching supplies, student to bring

pencil or pen for notes, 12" x 16" stretchers bars ASSEMBLED, tacks or staples, scissors for cutting threads (silk, metallics and others), a laying tool, floor or table stand or frame weight to stabilize your piece while working, mini flat-iron (optional), floss-away bags (optional), a 4H (hard lead) pencil or an air-disappearing purple pen for drawing on canvas (optional).

#### Project notes



### Class Description

"Porthole" to the sea designed to embrace our precious ocean. Create this majestic piece of stumpwork on a background of silk using Au Ver a Soie silk threads, cottons, specialty fibers, and embellishments for your own glimpse into the sea.

Explore several different forms of padding to create depth and realism. Highlights of this design feature a vibrant fish, sea sponge, coral, fishnet, and a selection of real seashells.

### Project / Class Information

Pre-work . . . . . No

Kit fee . . . . . \$75

Design area . . . . . 6" round

Technique . . . . . Stumpwork

Proficiency . . . . . Intermediate

Kit contents . . . . . Dupioni silk, quilters muslin, cotton, organza, suede, Au Ver a Soie threads, DMC fibers, Thread Gatherer chenille, Gumnuts wool, Miyuki beads, assorted seashells, hand dyed twisted cord, felt, cork board, polyester stuffing, needles, wire, instruction booklet with colour photos.

### In addition to the usual stitching supplies, student to bring

8" hoop with the inner ring bound, 4" hoop, mechanical pencil, white polyester sewing thread, #8 flat paint brush, straight pins, scissors to cut wire, fine embroidery scissors, awl, 14" square of lightweight cotton fabric colour does not matter, it will be discarded upon completion. Battery powered light and a magnifier if needed.



# 205

## A Garden View

Deborah Mitek

**TWO DAY CLASS • Saturday / Sunday • 7/20 & 21**

### Project notes



### Class Description

Join me in creating this delightful silk ribbon garden, a surface embroidery study in Perspective and the Knotted Stitch. There are 10 knotted-stitch variations used in the design, as well as the ribbon stitch, fly stitch and the straight stitch. A variety of silk ribbons are used, both solid colors and overdyed, as well as 4mm and 7mm widths, Caron Wildflowers, Waterlillies, Needlepoint Silks, overdyed flosses, and pearl cottons are used to embellish the garden scene on Congress Cloth with a photo transfer.

### Project / Class Information

Pre-work . . . . . No  
 Kit fee . . . . . \$130  
 Design area . . . . . 5" wide x 7" high  
 Technique . . . . . Silk Ribbon surface embroidery  
 Proficiency . . . . . Basic - Intermediate  
 Kit contents . . . . . Complete thread kit with needles, photo-transferred, taped Congress Cloth, Instruction Booklet, including a large picture of the design, stitch guides, detail photos, diagrams, a Bibliography, and Tips on Handling Silk Ribbon.

### In addition to the usual stitching supplies, student to bring

11" x 13" Stretcher Bars, tacks or staples, wooden laying tool, stand, frameweight, or clamp for hands free stitching, battery powered light and a magnifier and the usual stitching supplies.



### Project notes



### Class Description

An abstract geometric, Highland Circle features a circle of batik fabric applique to the canvas. A variety of stitches, including couching over laid silk Chenille thread, are used to produce movement within the design. Threads include Gloriana silks, Vineyard Silks, DMC Pearl Cotton, Soie Cristal, and Rainbow Gallery Neon Rays, Water 'n Ice, Neon Rays +.

Compensation and placement of stitched areas will be discussed, and the student will be able to adapt the piece if they'd like.

### Project / Class Information

Pre-work . . . . . No

Kit fee . . . . . \$115

Design area . . . . . 3.5" wide x 12" high

Technique . . . . . Counted Canvas

Proficiency . . . . . Intermediate

Kit contents . . . . . Instructions with color photo, 18ct mono canvas, batik applique and all threads to complete the design.

### In addition to the usual stitching supplies, student to bring

8x16 stretcher bars, tacks, laying tool, magnification and battery powered light if desired, and usual stitching supplies.

## Project notes



## Class Description

This class will concentrate on color theory relating to landscape, stitch technique including soft shading, and stitching bird forms. Students will also learn how to make self-cords and the actual construction of the box will be covered in depth with visual aids provided.

## Project / Class Information

Pre-work . . . . . No

Kit fee . . . . . \$155

Design area . . . . . 3" x 13"

Technique . . . . . Surface Embroidery

Proficiency . . . . . Intermediate - Advanced

Kit contents . . . . . Au ver á Soie, Soie d'Alger in approximately 20 colors Au ver á Soie - Surfine, Hand painted linen with design transfer, Silk lining, Needles, Spool silk, Perle cotton #12, and #5, Mat board, Card stock, Steam-A-Seam, Quilt bat, and Iron-on Pellon.

## In addition to the usual stitching supplies, student to bring

5" hoop or stretcher bars, magnification / battery powered light if desired and, usual stitching supplies.



# Starfish Heart Pendant

Amee Sweet McNamara

TWO DAY CLASS • Saturday / Sunday • 7/20 & 21

## Project notes



## Class Description:

Starfish Heart Pendant, Select a one-of-a-kind heart from, *The Mending Pile* - a series of handmade polymer clay cabochons made by Amee. Pair it with a, *Soutache & Bead Embroidery* kit and get ready to learn a special version of the "Flame Stitch" - appropriate for Adventurous Beginner and Intermediate soutache artists alike.

## Project / Class Information

Pre-work . . . . . No  
 Kit fee . . . . . \$120  
 Design area . . . . . 4.5" x 4.5"  
 Technique . . . . . Soutache & Bead Embroidery  
 Proficiency . . . . . Basic - Intermediate  
 Kit contents . . . . . Ultrasuede, bead backing, Soutache - in four colors as well as metallic, instructions booklet, polymer clay heart, beads, True-2's, bobbin nymo thread, jump rings, beading needle, fabric glue.

## In addition to the usual stitching supplies, student to bring

Students should come to class with a surface on which to work (bead-blanket or bead-tray), a good pair of sharp scissors and any additional Magnification / battery powered light if desired.



## Project notes



## Class Description

Do you collect unusual stitches? Have you wanted to learn some Elizabethan-style metal thread embroidery? Then this 4-day Intermediate level class is for you. This sampler has about 25 distinct, though often closely related, stitches. It is worked in gold and silver non-tarnish passing threads on a black linen ground. Before class, you will transfer the pattern using a pale sewing thread, which may take up to 8 hours. It is an expanded version of the 2023 EGA Seminar's 2-day class, A Taste of Honeysuckle.

## Project / Class Information

Pre-work . . . . . Yes, transfer the design to linen.

Kit fee . . . . . \$85

Design area . . . . . 4.5" wide x 4.5" high

Technique . . . . . Elizabethan Raised metal thread embroidery

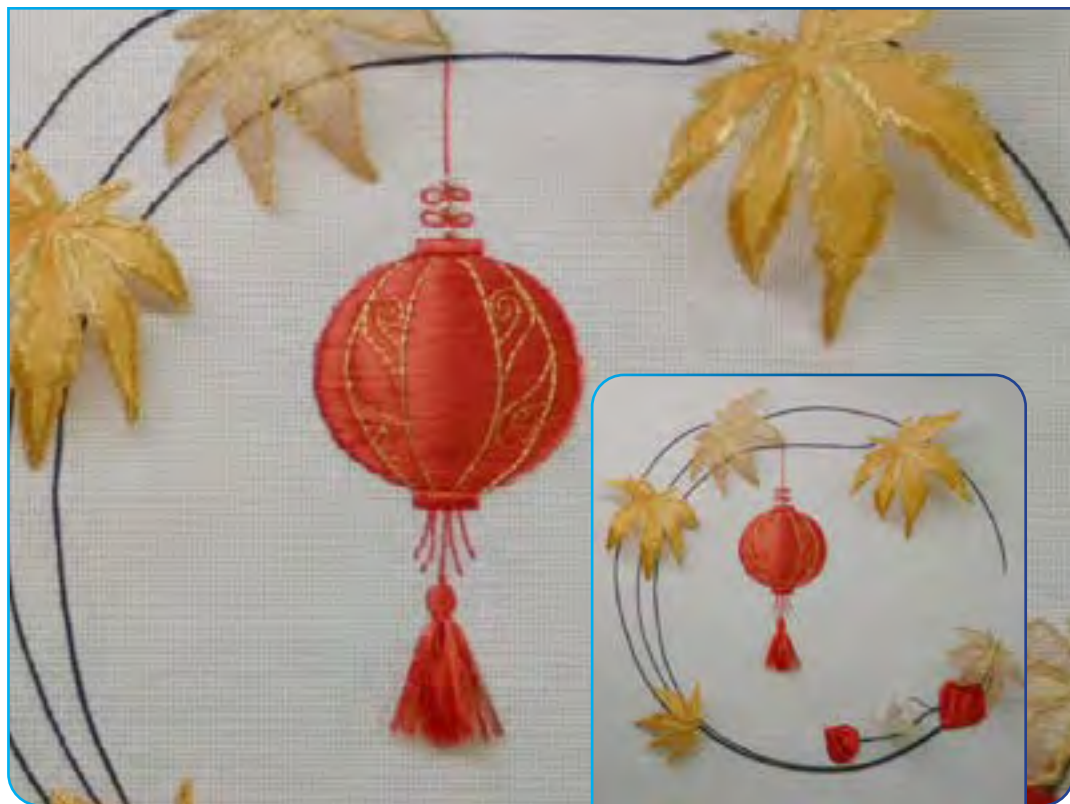
Proficiency . . . . . Intermediate

Kit contents . . . . . Instruction booklet, 10" x 10" royal blue high thread count linen & muslin, needles, floss threads, metallic threads and Beeswax. Practice Materials include: One piece of 7 tpi plastic canvas, Braiding Cord, #18 Tapestry needle and Doodle cloth with muslin.

## In addition to the usual stitching supplies, student to bring

10" x 10" Stretcher bars, frame or 5" hoop, magnification / battery powered light if desired, scissors for cutting metal threads and scissors for cutting floss, and tweezers.

## Project notes



## Class Description

Leaves dance on the wind and fall, waving to lanterns in the trees, and on the ground. Harvest lights the moon.

With a main foundation of Congress Cloth, the student will be introduced to silk and metal thread embroidery techniques including: 4 ways of padding; laying flat silk, couching #1 gold and braid superimposed on a foundation. Several foundations will be used for the detached elements: silk, metallic organza, and event organza.

## Project / Class Information

Pre-work . . . . . No

Kit fee . . . . . \$85

Design area . . . . . 9" wide x 9" high x 1.5" deep with detached elements

Technique . . . . . Silk & Metal Thread Embroidery

Proficiency . . . . . Intermediate

Kit contents . . . . . Congress cloth, silk fabric, metallic organza, gossamer fabric, flat silk, silk threads (3), metallic threads & metallic Braid (2 each), invisible thread, 28 gauge brass wire. Beads (Red @ 8mm and Gold @ 2.5mm), sequins, felt, waxed string, card, Needles, Instructions, and Photo .

## In addition to the usual stitching supplies, student to bring

14" x 14" Stretcher bars, 3 sets: 10" x 10" or 6"- 8" hoop.

14"+ plastic wrap, tacks; metal cutting scissors, silk cutting scissors, Laying tool, device for holding the frame steady, beeswax, glue stick, #3 pencil and the following items would be useful: small tweezers, and frame magnets. Battery powered lamp and magnifier if needed plus the usual needlework tools.



## Project notes



## Class Description

Our favorite summer fruit, the strawberry, is the theme for this motif-styled sampler. The fruit's recognizable shape is such a fun motif to interpret in various counted thread techniques. Chosen are queens, half-queens, colonial knots, back stitches and cross stitches.

Although diminutive in size, 5.5-inches wide by 4.5-inches high, it packs a challenge for an experienced embroiderer. Two pulled thread stitches are also used and of course, the color red predominates.

The model was worked on 36-count cream colored linen with 7 colors of DMC threads. The kit includes linen fabric, DMC threads, #24 and #26 tapestry needles, charting, stitch diagrams, color-photo and instruction manual. A 2-page Sampler Making and Sampler History bibliography is also included.

## Project / Class Information

Pre-work . . . . . No

Kit fee . . . . . \$55

Design area . . . . . 5.5" wide x 4.5" high

Technique . . . . . Counted Thread

Proficiency . . . . . Intermediate - Advanced

Kit contents . . . . . 36 ct. cream colored linen fabric, 7 colors of DMC threads, #24 and #26 tapestry needles, chart, stitch diagrams, instruction manual, color photo, washing instructions and a two-page Sampler Making and Sampler History bibliography is also included.

## In addition to the usual stitching supplies, student to bring

A 4 or 5-inch hoop (if used), scissors, pencil, extra battery powered lighting and magnification if needed.



**Project notes****Class Description**

Celebrate autumn with this elegant Stumpwork ornament. Sun kissed acorns hold tightly to the mighty oak while golden leaves prepare to fall. Rust velvet ribbon tied festively into a bow tops it all. Left-handed instructions available upon request.

**Project / Class Information**

Pre-work . . . . . No

Kit fee . . . . . \$35

Design Area . . . . . 1-1/2" x 3-1/2"

Technique . . . . . Stumpwork

Proficiency . . . . . Beginner / All Levels. Experience with surface embroidery encouraged

Kit Contents . . . . . Instructions, silk shantung, cotton fabric, stranded cotton thread, beads, needles, and finishing supplies

**In addition to the usual stitching supplies, bring**

Students will also need: 6" embroidery hoop; scissors for cutting fabric and felt; acid free glue stick, and usual stitching supplies. Magnification and a battery powered light are highly recommended.

## Project notes



## Class Description

Noel, is an amusing small holiday design. The "O" in Noel is done with a fun "stitching button"; it has 64 holes and will be stitched with a Jessica filled with beautiful red drop beads. The "e" is also a cool swirly attached button. The rest of the design - the "N" & "l" will be stitched in red & white stitches. A charming red & white wavy border will surround the design including some more gorgeous beads. A wavy white-on-white background will finish the piece. Threads will include Silk Lane Braids, Entice, and Sparkle Braid.

## Project / Class Information

Pre-work . . . . . No

Kit fee . . . . . \$105

Design area . . . . . 10.5" wide x 6" high

Technique . . . . . Canvas Embroidery - Needlepoint

Proficiency . . . . . Intermediate

Kit contents . . . . . 18ct line-drawn mono canvas, instructions, needles & case, photo, all threads, beads, and embellishments to complete project, including 2 stitching buttons.

## In addition to the usual stitching supplies, student to bring

Pencil or pen for note taking, 15" x 10" stretcher bars ASSEMBLED, tacks or staples, scissors for cutting thread, metallic, and silk, floor or table stand or frame weight to stabilize your piece while working, normal stitching supplies including a laying tool, beeswax may be desired after class for beading, mini flat iron for ironing threads (optional), floss away bags (optional), #4 pencil and/or air-disappearing purple pen for drawing on canvas (optional), counting pins (optional). Magnification and a battery powered light are highly recommended.



## Project notes



## Class Description

Come join me as we stitch this charming monogram design while learning some silk ribbon embroidery, canvaswork techniques, and bead embroidery. Dimension is created using textual stitches with beads. The Monogram will be the student's own choice from an Abigail Cecile Alphabet. The design uses Treenway 4mm & 7mm overdyed silk ribbons, Painters Threads Pastel Shimmer Ribbon, Silk Lame Braid, and Sparkle! Braids, on a 10"x 10" Soft White Congress Cloth background with a Monogram Pattern transfer. Miyuki Luster Delica Beads, Magnifica Beads & size 8 Frosted Glass Beads are used for the bead embroidery & embellishment. The Ribbon Stitch, Mosaic Variation, Alternating Oblong Cross Variation, Half-Bow Stitch, and French Knots are used to complete the design.

## Project / Class Information

Pre-work . . . . . No  
 Kit fee . . . . . \$95  
 Design area . . . . . 5" wide x 7" high  
 Technique . . . . . Silk Ribbon & Canvaswork with Bead embroidery  
 Proficiency . . . . . Basic - All Levels  
 Kit contents . . . . . Complete thread kit and beads with needles, Soft White Congress Cloth taped with pattern transfer, Instruction Booklet including a large picture of the design, stitch guide, diagrams, detail photos, Bibliography, Tips on Handling Silk Ribbon, & Abigail Cecile Charted Wildflowers Fields Alphabet.

## In addition to the usual stitching supplies, student to bring

10" x 10" Stretcher Bars, tacks or staples, Trolley needle and/ or wooden laying tool, stand, frameweight, or clamp for hands free stitching, Magnification and a battery powered light are highly recommended, and the usual stitching supplies.



### Project notes



### Class Description

Designed to be a box insert or large ornament, Holiday Box is a combination of squares and triangles, diagonal, and woven stitches. The contrast in texture of threads as well as stitches provide interest during the stitching process. Threads include Caron Watercolours, Kreinik Braid, Vineyard Silk, & DMC Floss. While there are a limited number of threads, the design still has a complex look.

Optional colorways for Halloween and Hanukkah are offered.

### Project / Class Information

Pre-work . . . . . No  
 Kit fee . . . . . \$59 plus shipping  
 Design area . . . . . 4" wide x 4" high  
 Technique . . . . . Counted Canvas  
 Proficiency . . . . . Basic - Intermediate  
 Kit contents . . . . . Instructions with color photo, 18ct mono canvas, and all threads to complete the design.

### In addition to the usual stitching supplies, student to bring

8" x 8" stretcher bars, tacks, laying tool, magnification and a battery powered light are highly recommended.

## Project notes



## Class Description

In this one day class, we will make an unembellished 4" d x 4" w x 2.5" h fabric covered and lined box with a tab closure. The purpose of this class is to show the construction process, after which you can create beautiful embellished boxes on your own with hand embroidered insets on the top. The instruction booklet includes: generic box construction, pre-embellishment instructions, tassel making directions, self cord instructions, ink jet printing on fabric, making quilter's flanges for custom inset embroidery tops among others. The box pictures provided to advertise this class are intended to show how this generic box pattern can be individualized to exhibit your creativity.

## Project / Class Information

Pre-work . . . . . No

Kit fee . . . . . \$65

Design area . . . . . 4" D x 4" W x 2.5" H

Technique . . . . . Box Construction

Proficiency . . . . . All Levels

Kit contents . . . . . 10 mat board box pieces/box, 1/4 yard thin quilt bat, scotch tape, needles, steam-a-seam bonding tape.

## In addition to the usual stitching supplies, student to bring

4 dozen clean wood spring-type clothespins, about 1/4 yd of two (2) coordinating quilt fabrics; one for the box exterior one for the box lining (fat quarters work), Aileen's Tacky Glue, matching thread, ruler, Terry cloth hand towel, pencil, scissors - fabric AND paper, and 6-8 long shaft straight pins.



## Project notes



## Class Description

Two flowers worked in flecked blackwork each appear within a golden 3" x 3" heart. The Plaited Braid, Ceylon, and Woven Wheel stitches are worked in gold passing thread, and the rest in silk, in your choice of color or black and white. It is suitable for stitchers of all experience levels and has no pre-work. They can be finished as a doublesided ornament, two single-stitched-side ornaments, or as a measuring tape dispenser.

## Project / Class Information

Pre-work . . . . . No

Kit fee . . . . . \$55

Design area . . . . . 4.5" wide x 4.5" high

Technique . . . . . Flecked Blackwork

Proficiency . . . . . All Levels

Kit contents . . . . . Instruction booklet, 8" x 8" white linen fabric with patterns stamped on it, #26 and #22 chenille needles, #22 tapestry needle, floss threader, white 80/3 linen thread or similar size, strands of black, red, and green Soie d'Alger, dark gold passing thread (non-precious metal) - Benton & Johnson #371, beeswax, 1 piece plastic canvas, 1 card/spool braiding cord, and 1 #18 tapestry needle.

## In addition to the usual stitching supplies, student to bring

Scissors for metal threads, scissors for both sewing & cotton thread, tweezers, 5" hoop for doodle cloth, 8" x 8" stretcher bars for ground fabric or an 8" hoop, tacks or staples and magnification and a battery powered light are highly recommended.



### Project notes



### Class Description

Metals and silk combine to make this lacy pinwheel a pleasure to stitch. The transparency of the silk interlock ground and close couched wire allow open filling stitches to raise over the interspersed blades of couched wire and braid creating a dimensional experience. Threads used include 3 colors and sizes of braid and wire.

### Project / Class Information

Pre-work . . . . . No

Kit fee . . . . . \$52

Design area . . . . . 4" circular design

Technique . . . . . Silk & Metal Thread Embroidery

Proficiency . . . . . Basic - Intermediate

Kit contents . . . . . 8" x 10" silk interlock canvas; 8" x 8" congress cloth, ecru; 2 sizes of braids, gold, copper, and silver, silk sewing threads, gold, copper and white; wire gold, copper and silver, lacing thread, needles, tracing paper, instructions, and, photo.

### In addition to the usual stitching supplies, student to bring

Stretcher bars, 2 sets: 8" x 10" (\$12.00 available from the teacher), tacks; metal cutting scissors, straight pins, device for holding the frame steady and flat, laying tool, beeswax, and bead tray. Lamp and magnifier if needed plus the usual needlework tools. Magnification and a battery powered light are highly recommended.

## Project notes



## Class Description

Indulgence Earrings, A great Beginner class for folks who are curious about Bead Embroidery and working with Shibori ribbon. Kits will be offered in a variety of color-ways. Students should bring good scissors, a surface to work on (such as a beading mat) and any additional light or magnifiers with which they like to work. Project may be completed in class.

## Project / Class Information

Pre-work . . . . . No

Kit fee . . . . . \$70

Design area . . . . . 4.5" x 4.5"

Technique . . . . . Bead Embroidery with Shibori ribbon

Proficiency . . . . . Basic

Kit contents . . . . . Ultrasuede, bead backing, Shibori silk ribbon, template, instructions booklet, 4mm & 6mm bicone crystals, sequins (variety of sizes and shapes), various sizes, shapes and colors of seed beads, bobbin nymo thread, rhinestone chain, earstuds, earring backs, beading needle, and fabric glue.

## In addition to the usual stitching supplies, student to bring

Good scissors, a surface to work on (such as a beading mat) and any additional magnification / battery powered light if desired.

# 301

## Daffodils and Viola

Wendy Innes

THREE DAY CLASS • Monday - Wednesday • 7/ 22, 23 & 24

### Project notes



### Class Description

Cheery and bright daffodils and viola worked on a background of silk. Worked with Au Ver a Soie silks and cotton fibers to create a lifelike bouquet ready to be enjoyed.

Numerous stumpwork techniques will be covered in class including padding, wired detached elements, 2 sided wired element, creation of flocked and beaded stamens, and thread painted petals.

### Project / Class Information

Pre-work . . . . . No

Kit fee . . . . . \$60

Design area . . . . . 3" high x 5.5" wide

Technique . . . . . Stumpwork

Proficiency . . . . . Intermediate

Kit contents . . . . . Detailed instruction booklet, Dupioni silk background fabric, thread card with all fibers, quilters muslin, cotton fabrics, wire, needles, flocking, beads and felt.

### In addition to the usual stitching supplies, student to bring

8" embroidery hoop with inner ring bound (Q-snaps, scroll rods, and spring hoops are not recommended), 3 - 4" hoops, fine embroidery scissors, scissors to cut wire, yellow polyester sewing thread, 12" square of lightweight cotton - color does not matter. Magnification and a battery powered light are highly recommended.



251

# Little Red Strawberries Sampler

Eileen Bennett

**TWO DAY CLASS • Tuesday & Wednesday • 7/ 23 & 24**

## Project notes



## Class Description

Little Red Strawberries Sampler is a historic style sampler featuring 25 bands designs and an abundance of strawberry motifs worked in the top random motif area. Measuring approximately 4" wide x 10" high worked on 36-count cream colored linen, 9 DMC threads have been used in hues of reds, greens and blue.

The strawberry motif is prominent throughout and all have been worked with a variety of period stitches which includes a cross, double cross, small cross, long arm cross, Belgian cross, back or line stitches, diamond Rhodes, queens, half-queens, 4-way queens, four-sided, satin, satin cushion, diagonal rice, colonial knots, herringbone rescaled, buttonhole bars, ermine filling and knit stitch. The verse chosen for this sampler reads:

**Choices are the hinges of destiny.**

The Tin Topper serves as a teaching aid or **try-out** for learning the 19 **olde sampler stitches** and is mounted to a tin container to be used as a 'holder' for needlework tools. The tin, magnet for needles and bottom liner of fabric is included in the kit. A fun project and a useful tool!

## Project / Class Information

Pre-work . . . . . No

Kit fee . . . . . \$88

Design area . . . . . 4" wide x 10" high

Technique . . . . . Counted Thread - Cross Stitch and have had experience working on linen fabric.

Proficiency . . . . . Intermediate /Advanced

Kit contents . . . . . Linen fabric, 9 colors of DMC floss, #24 and #26 tapestry needles, charting, stitch diagrams with a 19-page instructional manual, photo, washing instructions, a 2-page bibliography of Sampler Making and Sampler History is included. Tin Topper Materials Include: Linen fabric, DMC floss, inside bottom fabric, magnet, tapestry needles, charting, stitch diagrams, 9-page instructional manual with finishing instructions and photo.

## In addition to the usual stitching supplies, student to bring

A 4 or 5-inch hoop (if used), scissors, pencil, extra battery powered lighting and magnification if needed.

# 252

## Berried Treasure

Celeste Chalasani

**TWO DAY CLASS • Tuesday & Wednesday • 7/ 23 & 24**

### Project notes



### Class Description

What a treasure you'll create stitching this elegant Stumpwork ornament! Plump and juicy berries nestle gently against surface embroidered and detached leaves. In this class, you will learn intermediate Stumpwork embroidery while couching wire, creating padded slips, wrapping beads and wire, and using needle lace techniques to create wild blackberries, blueberries, and a strawberry. Your kit includes the fabrics, threads, beads, wire and finishing materials to embroider the berries and leaves, and finish into an ornament. Left-handed instructions available upon request.

### Project / Class Information

Pre-work . . . . . No

Kit fee . . . . . \$85

Design area . . . . . 1-3/4" x 2-1/2"; finished size is 2" x 4"

Technique . . . . . Stumpwork

Proficiency . . . . . Intermediate. Experience with surface embroidery encouraged

Kit contents . . . . . Instructions, silk shantung, cotton fabric, stranded silk and cotton threads, beads, felt, 33 gauge wrapped wire, vellum, needles and finishing materials.

### In addition to the usual stitching supplies, bring

Students will also need: Two 4" embroidery hoops; 8" x 8" Evertite frame or stretcher bars, or 7" embroidery hoop, wire cutters, 6" ruler, tweezers, acid free dark green wide felt tip marking pen, acid free glue stick, masking tape, mechanical pencil, small sharp scissors, scissors for cutting paper, and needle threader. Magnification and a battery powered light are highly recommended.



# 253

## Larry the Patchwork Lion

Toni Gerdes

**TWO DAY CLASS • Tuesday & Wednesday • 7/ 23 & 24**

### Project notes



### Class Description

Larry is a ferocious Patchwork Lion that explores many different stitches to create a happy addition to your needlework decorations. He is the third in a series of Patchwork animals; the first was Elliot the Patchwork Elephant followed by Gertrude the Patchwork Giraffe. The autumnal feel of the colors make stitching on this canvas a dream. The optional addition of a fun gold beaded crown and whiskers makes Larry the definite "King of the Jungle". Several Rainbow Gallery metallics, Vineyard Silk, Treenways Silk Eyelash & Planet Earth Silks, along with beads & sequins will be used to create this charismatic design. The stitches will include old favorites, as well as, a few surprises. The background will be a white on white diagonal pattern that emphasizes the corners of the design and enhance the lion's strong personality.

### Project / Class Information

Pre-work . . . . . No

Kit fee . . . . . \$185

Design area . . . . . 9" wide x 11" high

Technique . . . . . Canvas Embroidery - Needlepoint

Proficiency . . . . . Intermediate

Kit contents . . . . . 18 ct. white line-drawn mono canvas, instructions, needles & case, photo, all threads, beads, and embellishments to complete project.

### In addition to the usual stitching supplies, student to bring

Pencil for notes, 13" x 15" stretcher bars ASSEMBLED, tacks or staples, scissors for thread putting, metallic & silk, floor or table stand or frame weight to stabilize your piece while working, a laying tool, mini flat iron (optional), floss away bags (optional), #4 pencil or air-disappearing purple pen for drawing on canvas (optional).



# 254

## Butterfly Sunset

Deborah Mitek

TWO DAY CLASS • Tuesday & Wednesday • 7/ 23 & 24

### Project notes



### Class Description

Join me in stitching this delightful silk ribbon sunset garden! The focus of the class will be to apply the techniques of silk ribbon embroidery to a photo transfer. The student will learn to create dimension and texture by using a variety of silk threads and ribbons. The 9" x 6" design both 4mm & 7mm overdyed Silk Ribbons, Silken Straw, Capri 18, Floche, Wildflowers and Waterlilies, Bijoux, Water 'n Ice, overdyed Italian Wool, Weeks Dye Works Overdyed Floss, and DMC Pearl Cotton. Some stitches include the wrapped stem stitch, chain stitch, fly stitch, loop stitch, knots, the ribbon and twisted ribbon stitch.

### Project / Class Information

Pre-work . . . . . No  
 Kit fee . . . . . \$125  
 Design area . . . . . 9" wide x 6" high  
 Technique . . . . . Silk Ribbon surface embroidery  
 Proficiency . . . . . All Levels  
 Kit contents . . . . . Complete thread kit with needles, taped Congress Cloth with pattern transfer, Instruction Booklet including a large picture of the design, stitch guide, diagrams, detail photos, Bibliography, and Tips on Handling Silk Ribbon

### In addition to the usual stitching supplies, student to bring

15" x 12" Stretcher Bars, tacks or staples, Trolley needle and/or Wooden laying tool, stand, Frameweight, or clamp for hands free stitching, magnification and a battery powered light are highly recommended. and the usual stitching supplies.

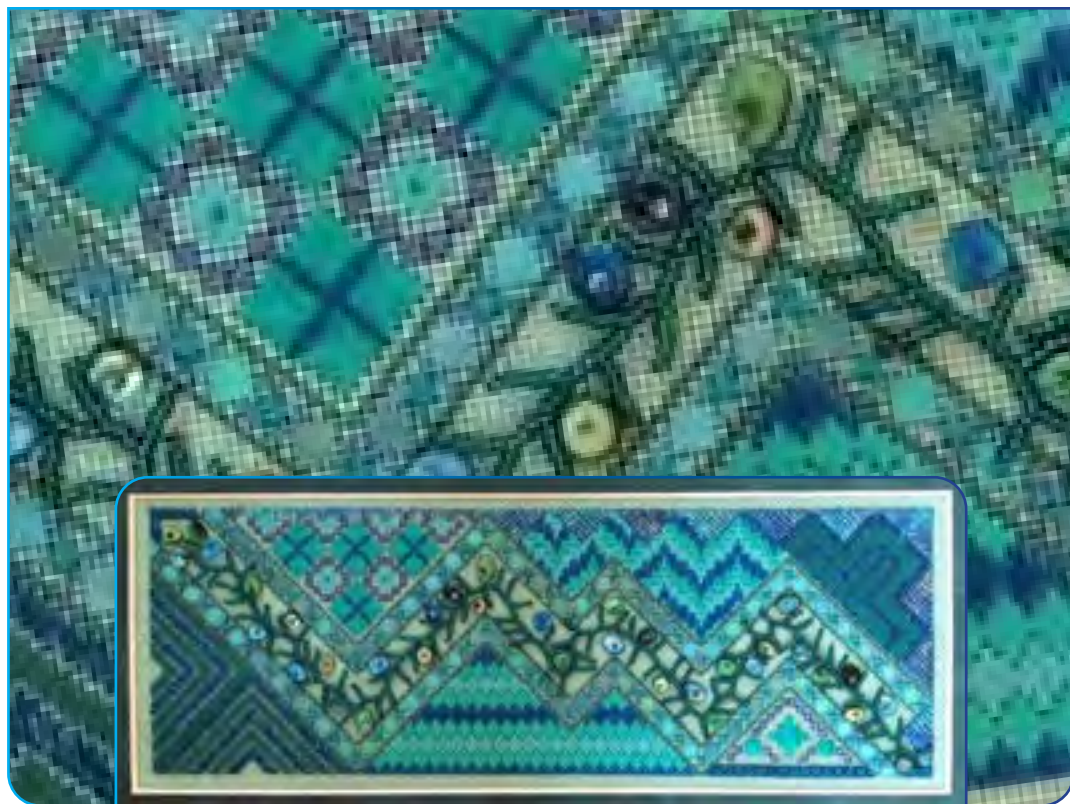
# 255

## Beaded Bermuda Reef

Kathy Rees

**TWO DAY CLASS • Tuesday & Wednesday • 7/ 23 & 24**

### Project notes



### Class Description

Create your own reef with a variety of threads, textured stitches, and beaded embroidery. Layers of threads and stitches create the triangular areas around the "reef" of beaded embroidery.

Students will be given instructions to reproduce my beaded design area but will also be encouraged to put their own spin on it.

### Project / Class Information

Pre-work . . . . . No

Kit fee . . . . . \$110

Design area . . . . . 12" wide x 4" high

Technique . . . . . Counted Canvas / Bead Embroidery

Proficiency . . . . . Intermediate

Kit contents . . . . . Instructions with color photo, 18ct mono canvas, and all threads, beads, charms, & embellishments to complete the design.

### In addition to the usual stitching supplies, student to bring

8" x 16" stretcher bars, tacks, laying tool, magnification / battery powered light if desired, & usual stitching supplies.



# 256

## Diminutive Rose

Canby Robertson

**TWO DAY CLASS • Tuesday & Wednesday • 7/ 23 & 24**

### Project notes



### Class Description

This class will have three areas of emphasis; a.) To make a seamless and even transition of color using soft shading. b.) To give the illusion of a third dimension on a 2 dimensional plane. And, c.) To give the illusion that a shape, like a leaf or a petal, can appear in front or behind another. Stitches to be covered in this class include chain, outline, wrapped outline, stem, coral knot, buttonhole, over-buttonhole, and crescent shaped spider.

### Project / Class Information

Pre-work . . . . . No

Kit fee . . . . . \$115

Design area . . . . . 3" x 5"

Technique . . . . . Crewel Embroidery

Proficiency . . . . . Intermediate

Kit contents . . . . . Approximately 20 values of Appletons crewel wool, linen twill with transfer, crewel needles, instructions with photo.

### In addition to the usual stitching supplies, student to bring

5" or 6" hoop that can be tightened or stretcher bars. Magnification / battery powered light if desired.



# 257

## Aperture Hi-Low Lariat-Style Necklace

Amee Sweet McNamara

TWO DAY CLASS • Tuesday & Wednesday • 7/ 23 & 24

### Project notes



### Class Description:

Aperture is a stylish, contemporary piece incorporating clean lines and exciting textures. It can be worn as a high (short) lariat style, a low (long) lariat style, or even a belt! adventurous beginners will learn the basics like aligning & stacking, shaping stitches and sacking, but also more up-to-the-minute skills such as working around a ring, incorporating Rhinestone Chain, adding twisted cord, netting over findings, and alternating edge-beading techniques.

### Project / Class Information

Pre-work . . . . . No  
 Kit fee . . . . . \$85  
 Design area . . . . . 4.5" x 4.5"  
 Technique . . . . . Soutache & Bead Embroidery  
 Proficiency . . . . . Adventurous Beginner  
 Kit contents . . . . . Ultrasuede, Italian Soutache, twisted cord, sari silk ribbon, e6000 glue, instruction booklet, brass ring, tear drop shaped drops, pearls, crystals, rhinestone chain, sequins, Duracoatseed beads, bobbin nymo thread, jump rings, head lins, Kumihimo end cap (1), beading needle, fabric glue.

### In addition to the usual stitching supplies, student to bring

A surface to work (bead blanket or tray), a pair of sharp scissors, pliers, looping or bail-making pliers and flush-cutters. Magnification / battery powered light if desired.



# Our Faculty



## Eileen Bennett

Eileen Bennett, designer, historian, author, lecturer, teacher is a recognized expert in the art of sampler stitching, much sought after in the United States and abroad for her encyclopedic knowledge of historic embroideries. Her *Red Book of Sampler Stitches*, containing over 73 clearly drawn stitch diagrams, continues to be one of the industries leading books on 'how-to-do' needlework. And for those wishing a quick course in sampler history, *The Evolution of Samplers... a 400 year time line* is a must have, must read book!

A contributor to America's leading needlework magazines, Eileen teaches at guild meetings, needlework shops and shows throughout the country. She has served on the Board of Advisors for Antique Sampler & Needlework Quarterly. She has executed commissions from the Grand Rapids, Michigan, Public Museum, and worked with the Ulster Folk Museum in Belfast, Northern Ireland. Eileen is currently the chairperson for Michigan's Sampler Survey... a nationwide search documenting Michigan's school-girl embroideries.

**Classes:** **101** Strawberry Fair Sampler on page 17  
**201** Crown of Pearls on page 7  
**251** Little Red Strawberries Sampler on page 27

\*\*\*



## Celeste Chalasani

Celeste Chalasani is an award winning designer and teacher specializing in Stumpwork. She has taught extensively both in person and virtually for the Embroiderers' Guild of America (EGA) at chapter workshops, regional and national seminars; the National Academy of Needlearts; other regional guilds; Quiltfest and Crafts. She is a graduate of the Academy of Needlearts Teachers' Certification program specializing in Stumpwork.

*Teaching Stumpwork is a labor of love for me. I am passionate about sharing what I know. I approach teaching from the understanding that different people learn in different ways. I strive to provide clear written instructions with step-by-step color photos, orally explain the technique with color coded visual aids, demonstrate stitches and techniques, and work one on one with each student as they practice their techniques.*

[www.celestechalasani.com](http://www.celestechalasani.com)

**Classes:** **102** Fall Daze on page 18  
**202** Ode to the Honeybee on page 8  
**252** Berried Treasure on page 28

\*\*\*



## Toni Gerdes

Toni Gerdes holds Teachers' certification from the National Academy of Needlearts specializing in canvas embroidery. She currently serves on the Board of NAN as the Director of Education after serving 5 years as Assistant Director of Teachers' Certification. She has also served on the Board of Directors for several ANG chapters as Program Chair & President. She is a past President of NETA. She has received numerous awards for her designs as well as, the prestigious NAN Lifetime Achievement Award. Toni has taught for NAN, EGA, and ANG, as well as guilds & shops. She has been published in Needlepointers, Needlepoint Now, and in Needle Arts as the Artist Across America. She enjoys all types of stitching and especially sharing her knowledge with others. She currently resides in Colorado. See pictures of her work at [www.tonigerdes.com](http://www.tonigerdes.com)

**Classes:** **103** Noel on page 19  
**203** Monet Kimono on page 9  
**253** Larry the Patchwork Lion on page 29





# Our Faculty



## Wendy Innes

Wendy began her needlework journey at the young age of 7, under the instruction from her mother. She was fortunate to have inherited her father's artistic gene, that runs strong in her family. Wendy's early passion has evolved over the past 40 plus years and she has won a number of awards and accolades, as far back as high school. She has continued to demonstrate mastery with most recent multiple stumpwork designs published in the Australian *Inspirations Magazine* in Wendy has a passion for anything with a threaded needle and has been teaching many forms of needlework extensively for over 30 years in Canada, Australia, and the US with a specialty in Stumpwork.

**Classes:** **204** Porthole on page 10  
**301** Daffodils and Violas on page 26

\*\*\*



## Deborah Mitek

Deborah Mitek is a needlework designer and teacher specializing in silk ribbon embroidery and surface stitching on both fabric and canvas. Learning embroidery and knitting at an early age gave her a lifelong passion for all things needlework. As a long-time member of EAC, NAN, ANG & EGA, she teaches at the national, regional, and local levels. Her work has been featured in both Needle Arts and Needle Pointers magazines. Deborah is also the owner of Island Stitchery & Studio, a retail needlework shop.

**Classes:** **104** Wildflower Fields / Monogram on page 20  
**205** A Garden View on page 11  
**254** Butterfly Sunset on page 30

\*\*\*



## Kathy Rees

Kathy Rees learned to cross stitch at fourteen and has never stopped using a needle. After earning a business degree and working in the corporate world, she worked in her family's needlework shop for eighteen years. Kathy began designing, publishing, and teaching in 2006, specializing in geometrics, offering multiple colorways for many of her designs. She closed her shop in 2011 to design and teach full-time.

**Classes:** **105** Holiday Box on page 21  
**206** Highland Circle on page 12  
**255** Beaded Bermuda Reef on page 31

\*\*\*



## Canby Robertson

Canby Robertson has been designing and teaching embroidery, painting, and calligraphy for over 30 years. She has a degree in Fine art/art history and is an EGA Master Craftsman in crewel embroidery.

**Classes:** **106** Boxes Galore! on page 22  
**207** The Dickcissel's Prairie Ort Box on page 13  
**256** Diminutive Rose on page 32



# Our Faculty



## Melinda Sherbring

Melinda has examined Elizabethan-era embroidery at the Manchester Gallery of Costume, the National Museum of Scotland, the Los Angeles County Museum of Art, the DeWitt Wallace museum in Colonial Williamsburg, the Jamestown museum, and Boston's Museum of Fine Arts. That original draft book has been channeled into several instruction books incorporating what she has learned from the pieces themselves.

Melinda now teaches needlework locally and nationally, with designs rooted in history. Her first EGA Group Correspondence Course, *More Than a Rose*, came out in June 2016. Her second, *Sweet Bag Sewed of Silver & Gold* is currently an EGA lightning round project with registration open through November 30, 2023. She has taught at several national seminars. She appeared on TV in *Sew Much More* (episode SMM-102) discussing blackwork embroidery. She has written articles for EGA's *Needle Arts* magazine, and the Fall 2023 *Piecework* magazine. She has also posted a dozen papers with in-depth examinations of individual historical pieces on Academia.edu.

Melinda has been a member of the Embroiderer's Guild of America since 1991 and the American Needlepoint Guild since 1992. She earned a Master Needle Artist certificate through ANG in 2004, and is working her way through the EGA Counted Thread Master Craftsman program.

**Classes:** 107 Flecked Flowers in Hearts on page 23

401 Twice the Taste on page 15

\*\*\*



## Kay Stanis

Kay Stanis is an internationally known fiber artist, designer, Master Craftsman, and Certified and Graduate Certified Teacher of EGA and Kurenai Kai Traditional Japanese Embroidery. She has been and will be on the faculties of American Needlepoint Guild national seminars, Embroiderers Association of Canada, EGA national and regional seminars, Callaway School of Needlearts, Koala Conventions, South Australia Embroidery Conference, Embroidery 2000 (New Zealand), and many independent groups. Her website is [www.the-gilded-edge.com](http://www.the-gilded-edge.com) and she has recently published *Techniques of Metal Thread Embroidery*.

**Classes:** 108 Pinwheel Pleasure on page 24

402 Lanterns on page 16

\*\*\*



## Amee Sweet-McNamara

Ask Amee K. Sweet-McNamara why her fine-craft business is called *Amee Runs with Scissors*, and she usually just laughs and says, *Because it sounds a whole lot sexier than Amee Eats Paste*. Working out of her New Hampshire home, Sweet-McNamara makes one-of-a-kind hats, and wearable-art textile-jewelry using a variety of techniques including *Soutache & Bead Embroidery*. Amee is the author of the books *Soutache and Bead Embroidery* and *Elegant Soutache*.

**Classes:** 109 Indulgence Earrings on page 25

208 Starfish Heart Pendant on page 14

257 Aperture Hi-Low Lariat-Style Necklace on page 33





# Special Events and Activities

## Silent Auction

Pictures of items will be posted on the website along with all the details. Items include full kits in many different techniques.

Payment is by check or Paypal – your designated choice and information must be on your bidder form. If Paypal, invoices must be paid prior to pick up. Pick up will be just prior to the no host reception on July 24 – 5:30 – 6 pm. (location TBD). Please bring your check – or Paypal confirm.

Everyone can bid – whether present or not. If you are not present, your “agent” must have written authority from you to bid and to collect the item. Form will be on the website.

Auction to benefit GPR

Opens: Saturday, July 20, 2024 7:30 am

Closes: Wednesday, July 24, 2024 NOON!

Location: Seminar Central

## Merchandise Night - Saturday July 20th

This is the night to find many fascinating wares that could spark your next inspiration. Hopefully a few that you just can NOT live without. So be sure to bring your favorite form of payment with you whether it be your checkbook, credit cards or even the old favorite, CASH. Every seminar we have different vendors showing off their wares and I'm sure you will find something special.

If you or someone you know might like to participate being a vendor at Merchandise Night, the fee is \$35 for a half table or \$70 for a table and multiple tables may be reserved and those that need more space. The table fee includes a listing as a participating vendor on the seminar website with a link to your website and a listing in the printed seminar handbook. For more information and an application form, contact Christine Tanabe ([ctanabe19@gmail.com](mailto:ctanabe19@gmail.com)).

## Stitch Bingo - Sunday July 21st from 7pm - 9pm

Come join us for a fun evening of bingo and prizes. The catch is you create your own embroidered bingo board!

We have chosen 50 different stitches for you to choose from and each has multiple variations so let your imagination take flight! Each square will present a different type of stitch. You can do a board of simple stitches – just 5 examples of the chosen stitch per square. You can do a board with a simple pattern in each block, with or without name of stitch. You can go all artsy and fill each square where the majority of the square is the stitch or variations. Check out all the Stitch Bingo details on the website.

- You can use any type of thread. You can use any color of thread. Think about variation on one color or do a rainbow. Have fun with this.
- Remember the center square is a “free” square.
- It will also help to embroidery BINGO across the top of the columns/square and 12345 down one side of the square for each block.

## Education Outreach - Monday July 22nd Noon - 1pm

Let'sTime has been set aside for Chapter Outreach persons to meet as a group to share what chapters are doing for outreach. This will be a good time to share ideas and resources.

## PJ's Stitch In - Monday July 22nd from 7:30pm - 9:30pm

Let's gather downstairs in the bar area to have our own Seminar 2024 Pajama Party / Stitch in. We want to see what you have been working on in class so far. Come on down and share with the rest of us. I sure know that I would love to see what you have been learning because we can't all take the same classes at the same time, so let's all get inspired together. Come on down in your comfy clothes OR (as I'm looking forward to doing) wear your favorite Pajama's and let's have some fun. Just remember though, there are more classes to enjoy on Tuesday morning so make sure to not stay up too late!



# Frequently Asked Questions

## What is Seminar?

Seminar is a multi-day event where classes and other events are offered. Seminar provides an opportunity to learn from highly skilled and respected teachers in a small class setting. The teachers are hired to teach one-, two-, three- or four-day classes. The classes meet for a morning and afternoon session, with a long lunch break; there are also short morning and afternoon breaks to stretch your legs and rest your eyes.

## How to choose a class as a newcomer to stitching?

An experienced seminar attendee once recommended choosing two classes: (a) Choose one from a teacher who is a long time teacher and master of a technique you want to learn; (b) Choose the other because it appeals to your inner artist. Do check that the classes are labeled Beginner or All Levels so as to not be frustrated with the learning experience.

## What should I wear to class and for the banquets?

Wear comfortable clothes to class - casual pants, light-weight top, simple dress, and do bring a sweater or jacket as some rooms may be a bit cool. Do look at the class descriptions as you may want to bring an apron or other cover in classes that have paints or other messy materials. For the banquets, these are festive occasions and we encourage a more dressy attire.

## What are the "usual stitching supplies"?

- Needles - a variety. Most kits have the necessary needles, but it never hurts to have a few of your own in an assortment of sizes and types.
- Needle Threader and Needle Puller
- Straight Pins with heads
- 6" Ruler
- Laying Tool
- Scissors - small sharp pointed embroidery scissors
- Note taking materials > pencils (black soft lead pencil for note taking and a couple of colored pencils for notations on the instruction sheets), eraser, small post it notes, and highlighter.
- Teacher specified method for maintaining tension - hoop, roller bars, frame with tacks or staple gun, or slate frame.
- For Beading Projects: bead mat, bead holders (2-6 small triangle trays), bead scoop, thread conditioner at the seminar.
- Personal, battery operated light. All student electronics, including task lights used in the classroom, must be battery operated. Don't forget to bring your Halo or other batteries!
- Also Good to Have: magnification, frame weight or clamp or embroidery stand, hand lotion, cover for your project, tweezers, magnets (2) for holding your needles out of the way, spool of sewing thread in neutral or pastel (not red), utility scissors, tape measure, pin cushion or other pin holder.





# Registration Information

## Registration Dates

Registration begins January 1, 2024 and ends March 31, 2024.

- January 1, 2024 - January 31, 2024 > **Premier Registration**  
Registrations and payments received by the Registrar by 11:59 PM PST January 31, 2024 are considered Premier Registration and will be treated as equal. Class assignments in oversubscribed classes will be made by lottery among those registering during the Premiere Registration period.
- February 1, 2024 - February 28, 2024 > **Open Registration**  
Registrations and payments received by the Registrar during this period will be accepted for available classes. If registration for a particular class is low, it may be canceled prior to the conclusion of Open Registration. Class assignments in classes which become oversubscribed during the Open Registration will be made by lottery among those registering during Open Registration. Registrants who registered during Premiere Registration for slots in that class will retain their assignments.
- March 1, 2024 - March 31, 2024 > **As Available Registration**  
Registrations and payments received by the Registrar during this period will be accepted if space is available in the class and by permission of the teacher.

## Registration Fees

Please note, class fees include the specified number of class days, hospitality items, and banquets as listed. Hospitality items include a seminar pin, a seminar tote bag, seminar handbook, and other goodies. Please note, class fees do not include kit fees.

- Non-Refundable Registration Fee \$125 assessed of all registrants.
- 5 days of class . . . . . \$650 Any combination which adds up to 5 days of class, two banquets, and hospitality items.
- 4 days of class . . . . . \$550 Any combination which adds up to 4 days of class, two banquets, and hospitality items.
- 3 days of class . . . . . \$450 Any combination which adds up to 3 days of class, one banquet, and hospitality items.
- 2 days of class . . . . . \$325 Any combination which adds up to 2 days of class and hospitality items - one banquet is included.
- 1 day of class . . . . . \$125 Any single day of class and hospitality items - banquets are not included.
- Non-Student Fee . . . . . \$175 Two banquets and hospitality items - classes are not included.
- Non-EGA Member Fee . . . . . \$55 Assessed of participants who are not current EGA members.
- Commuter Fee . . . . . \$250 Assessed of participants taking 2 or more days of classes and not staying at the seminar hotel.

Complete registration instructions will be available on the Seminar website one week prior to the start of registration.

[Click here for REGISTRATION FORM](#)



# Cancellation & Covid-19 Policy

## Cancellation Policy

- All cancellation notifications must be submitted in writing (email is acceptable) and must be received by the Registrar, or postmarked if sending via USPS, on or before May 1, 2024.
- If a submitted cancellation is not acknowledged by the Registrar, the registrant should request confirmation to verify receipt.
- Refunds will not be made after this date except in case of extreme emergency and approved by the Seminar Executive Committee.
- The \$125 non-refundable registration fee will not be refunded in any case.
- In the event a class is canceled after class assignments are made, and the student chooses to not attend the seminar, the seminar fee, less the \$100 non-refundable registration fee, will be reimbursed.
- In the event of cancellation, if the student received pre-work, he or she will receive the remainder of the kit and the student will pay the full kit fee plus shipping.
- In the event of cancellation and no pre-work was sent, it is the teacher's prerogative to allow refunding of the kit fee. If no kit fee refunds are specified in a teacher's contract, the kit will be made available to the student. Any costs incurred in delivering the kit are the responsibility of the student.
- No refund requests will be considered after 30 days of the close of the seminar.
- All refunds will be made by check within 50 days of the close of the seminar.

\*\*\*

## Covid Policy and Health Policy for Seminar 2024

Please check the Seminar website for the latest up to date information. This policy is subject to change. This is the current policy as of November 12, 2023.

### We want to keep everyone healthy and safe

1. Remember that COVID and other respiratory illnesses can pose a significant health risk to some of our members. As a community, we are all responsible for taking steps to protect each other and reduce spread of illness.
2. Everyone who has any health concerns should consider wearing a high quality mask in the classroom and when in crowded places to protect yourself and others.
3. Everyone should stay current on vaccinations for COVID and other respiratory illnesses.
4. Please stay home and do not attend Seminar if you have symptoms like coughing, sneezing, congestion, or fever, and/or if you are currently testing positive for COVID-19.
5. Wear a high quality mask for 10 days after a known exposure. Wear the mask particularly when in contact with others indoors. If you have had a Covid exposure, please stay home and do not attend Seminar.
6. **If you test positive while at Seminar** – please let us know and remain isolated per the CDC Guidelines.  
**DO NOT ATTEND CLASS.**

If you have a Covid exposure or test positive for Covid within 10 days prior to Seminar, please contact the Registrar to cancel your attendance at Seminar. We will credit you for the class fee. Please also cancel your hotel reservation directly with the hotel. We don't know if the teachers will release the kits in the event you need to cancel your attendance at Seminar. We ask that you identify someone from your chapter to take your Seminar Goody bag (and your kit if allowed) home.

Please consider testing immediately prior to attending Seminar. We have a number of people in our population that could be adversely affected by these diseases.

If you test positive for Covid while at Seminar, or feel ill, please let us know immediately and stay isolated in your room. The Wellness Committee will contact your teacher to let them know you will not be attending class. Please contact the Seminar Chair – information in Handbook. We will credit you for your class fee, prorated by your attendance before you became ill.





# Hotel Information



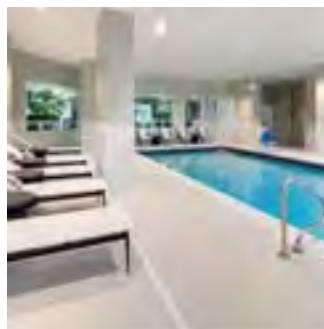
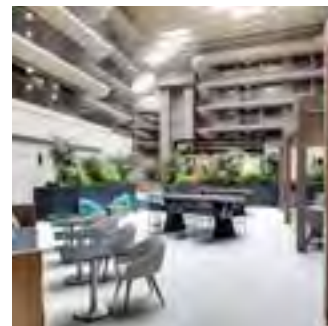
**101 McInnis Pkwy,  
San Rafael, CA 94903**

**Phone: 415.499.9222**

***Hotel link for  
attendees will be  
made available on  
Seminar website  
approximately  
January 1, 2024.***

## **Spacious suites near Marin County Civic Center**

Relax in a two-room suite at our hotel minutes from Northgate Mall and the Marin County Civic Center. We're between wine country and San Francisco, putting the Golden Gate Bridge, Bay Area attractions, and Sonoma wineries within a 30-minute drive. Enjoy free made-to-order breakfast and our complimentary evening reception.



## **Facility Amenities**

- Connecting Rooms
- Free made-to-order breakfast
- Complimentary evening reception
- Non-smoking rooms
- Digital Key
- On-site restaurant
- Indoor pool
- Fitness center
- Pet-friendly rooms
- Room service
- Meeting rooms