



**EMBROIDERERS' GUILD OF AMERICA**  
**22<sup>nd</sup> THROUGH THE NEEDLE'S EYE**  
**VIRTUAL EXHIBIT: INSTRUCTIONS**

The Embroiderers' Guild of America is very pleased to present its 22<sup>nd</sup> National Exhibit, Through the Needle's Eye. The Embroiderers' Guild of America acknowledges the value of needlework in art and history. The National Exhibit is a representative selection of the best in artistic and technical works designed and created by EGA members. It is through the needle's eye that EGA embraces both traditional and contemporary needlework while expanding the perception of embroidery as an art form.

For the first time in its history, this exhibit is being presented as a virtual show. Previous exhibits travelled around the country for 3 years, but as it became more difficult and more costly to find suitable locations, other options were sought. Through the use of technology, the visitor will be able to view this exhibit from the comfort of his/her own home, as often as desired, and to study the pieces in ways not possible in person.

This packet will explain how to access and view the show.

NOTE: This show is open to the public, free of charge. We invite all visitors to view the show as often as they would like to.

We hope that you enjoy your tour of this wonderful display of needlework!

-- The 22<sup>nd</sup> Through the Needle's Eye Committee

**A NOTE ABOUT ACCESS:**

This show is available to anyone using a computer, tablet, or cellphone. All that is required is Internet service and access to the EGA website (egausa.org). Please note that the exhibit may take a moment to load, depending on your device and Internet strength. Be patient – we assure you it will be worth the short wait!

The directions in this packet are based on using a computer. The options are similar when using a tablet or cellphone but there are a few changes which are explained on pages 7-8. The screenshots have been minimized to save space and are only intended to give you an idea of where to find those elements when you are in the exhibit.


**OVERVIEW AND ORGANIZATION OF THE SHOW:** A total of 57 pieces were juried into this exhibit. They represent a wide variety of techniques and demonstrate the remarkable creativity and skill of our EGA members.

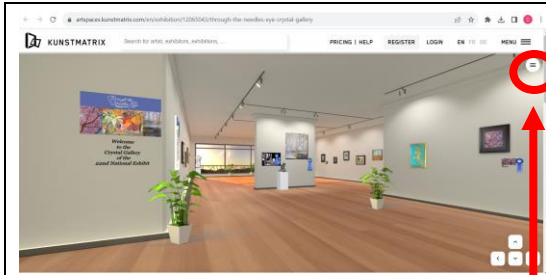
The show is divided into 2 galleries: Crystal and Garnet. To move from one to the other, simply look for the door. Whether you are going from Crystal to Garnet or Garnet to Crystal, just click on the door in the gallery you are in to move to the other one.



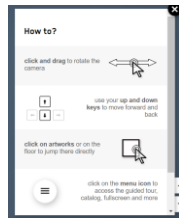
## TO ACCESS THE EXHIBIT

- Access the Through the Needle's Eye page on the EGA National website (<https://egausa.org/tne>) to find helpful documents and to enter the galleries.
- Before you enter the show, you might want to access one or more of these documents by clicking on the appropriate button on the above-mentioned web page:
  - **LIST OF ENTRIES AND WINNERS:** This 2-page document lists all of the entries by gallery and identifies the winners. Having the list in hand may help ensure that you view each piece and can give you a reference for items you want to return to.
  - **HOW TO NAVIGATE THE SHOW:** This button allows you to print more copies of the instruction packet you are currently reading.
  - **QUICK-START GUIDE:** This one-page document provides brief tips for better viewing of the exhibit.
- To access the exhibit itself, click one of the blue buttons: **ENTER CRYSTAL GALLERY** or **ENTER GARNET GALLERY**. You can easily move from one gallery to the other once you are in the exhibit, so you can enter either one to start with.

	<p>If you click on <b>START GUIDED TOUR</b>, the computer will move through the entire exhibit without your having to take any further actions. The tour will show you each item in its own predetermined order, resting on each piece for approximately 6 seconds before moving on, and will continue through the entire gallery. In this mode, you will not be able to ZOOM in on anything or stop to see the artist's statements and related information unless you pause or stop the guided tour. This might be a good way to get an overview of the gallery before you take your own customized tour but is probably not the best way to see the pieces in detail. NOTE: This guided tour does not always start at the first item but, if given time, will eventually show each item in the gallery. This tour will repeat continuously until you stop it or leave the exhibit.</p>
<p><b>Opening Screen</b> You have 2 options for entering the exhibit. Click on the black <b>ENTER EXHIBITION</b> button to start your <i>customizable</i> tour of the exhibit. This is usually the best way to view the show because you will have full control over what you look at and how long you remain with any one item. You will also be able to read the artist's statements and zoom in on each item if you want to see the details.</p>	



If you are not in FULLSCREEN mode, you will see two menu buttons: The lower, smaller one is the one circled above and expanded below, sitting in the gallery itself. The larger menu button appears above and outside the gallery and should be ignored.



## MENU ITEMS:

- **EN|FR|DE:** This option allows you to select the language used for the menu items and other instructions in the system. The other written information in the exhibit itself, such as the wall messages and artist's statements, will appear only in English no matter which language you select.
- **ENTER FULLSCREEN:** Selecting FULLSCREEN mode will remove the excess wording and menus above the exhibit screen, allowing you to see the exhibit without those distractions. FULLSCREEN mode is also necessary if you want to zoom in on the details of a piece. After you select FULLSCREEN mode, that item will change to read EXIT FULLSCREEN MODE. To back out of FULLSCREEN mode, you can either press the ESC button or select EXIT FULLSCREEN MODE in the menu.
- **HELP:** The **HELP** menu will give you some reminders about how to move around the exhibit.
- **BACK TO START:** This option will take you back to the first screen you saw when you entered the gallery.
- **START TOUR:** See page 2 of this packet (START GUIDED TOUR) for explanation of this option.
- **LIST OF WORKS:** See page 4 of this packet for explanation of this option.
- **ABOUT THE EXHIBITION:** Selecting this item will pull up some basic information about this exhibit.

**VIEWING THE ART WORKS:** There are many ways to move through the galleries. Here are a few of the most common ways:

- Use the **ARROW KEYS** in the bottom right-hand corner of the screen. You can maneuver through the exhibit as if you were walking through it in person. While this is a very effective method, it may take some practice to get you exactly where you want to go!
- You can click and hold your left mouse button and move the mouse backward, forward, or sideways to move around the gallery. Be patient as you try to use this method, however: It also take some practice!
- Click on the menu icon discussed on page 3 of this packet and click on **LIST OF WORKS**. You will see a list of all of the items in the gallery. Click on any item to move directly to it.
- When you enter Detail View by clicking on the piece, the buttons in the bottom right-hand corner will give options of moving to the **PREVIOUS** or **NEXT** item instead of giving you the arrow keys. As long as you stay in detail view, you can use those buttons to move from piece to piece.
- You can click on a piece to go directly to it.
- If you are using a touch-screen device, you can move and zoom in/out using your touch-screen hand motions.

#### **DETAILS AND ARTIST'S STATEMENT**

Each entry in the show is accompanied by some detailed information including the name of the artist, the title of the work, its dimensions, and the artist's statement. If the piece won an award, that information will be included, as well.

To access this extra information, follow these steps:

- Click once on the picture of the piece. This will take you into the **DETAIL VIEW**.
- In the upper right-hand corner of the screen, you will see a gray box with the name of the artist and the title of the work, next to the "information" icon (the letter "i" in a circle). Click on the information icon.
- A new window will open, revealing those details about the item.





Once in the information screen, you can use the zoom button (the white magnifying glass in the upper left corner of the picture) or use the arrow keys or the scroll button on your mouse to zoom in on the details. Sometimes zooming in from the detail screen brings better clarity of the details, but in other cases zooming from the original view may have better results. Be willing to experiment.

To exit this information screen, click on the **X** in the upper right corner of the information panel. You can then click on the **X** in the gray box if you want to exit the detail view. You can continue moving through the gallery in detail view if you prefer, however.

**Easier method:** To exit the information screen AND exit the detail view in one step, when you are ready to close the details and return to the exhibit, merely click on the **X** in the gray box in the upper right-hand side of the gallery.

If you are using a touchscreen device, you may be able to accomplish many of these tasks using your touchscreen motions.

**TO ZOOM IN ON A PIECE TO SEE THE DETAILS OF THE STITCHING (DETAIL VIEW):**

One of the most exciting aspects of this virtual exhibit is having the ability to zoom in to see the details of the stitching on these wonderful pieces. Zooming in is very easy!

- Click directly on the item to enter DETAIL VIEW.
- If you have a mouse with a roller ball, simply roll your finger over the ball to zoom in on the stitching. You can roll the ball in the other direction to reduce the zoom back to original size.
- If your mouse does not have a roller ball, you can use the arrow keys on your keyboard: The Up Arrow will let you zoom in on the piece and the Down Arrow will let you zoom back out.
- The mouse button may allow you to zoom in closer and with more control than will the arrow keys.
- When you click on the item, you will be taken into DETAIL VIEW. If you desire, you can move to other pieces using the NEXT or PREVIOUS buttons while you remain in DETAIL VIEW. However, if you want to exit DETAIL VIEW, simply click on the X in the gray box in the upper right-hand corner of the screen.

### EYE - THE CRYSTAL GALLERY

CURATED BY:  
**THE EMBROIDERERS' GUILD OF AMERICA**

[View exhibition catalog](#)

The Embroiderers' Guild of America acknowledges the value of needlework in art and history. The National Exhibit is a representative selection of the best in artistic and technical work. It is through the needle's eye that EGA members both traditional and contemporary needlework while expanding the perception of embroidery as an art form.

This exhibit showcases the creative work of EGA members from around the world. The pieces were juried into three award-winning categories: needlework, contemporary needlework, and technical work. The members were encouraged to document their heritage or cultural journey through their needlework, and the results are both fascinating and beautiful.

As you study these pieces, we hope that you will discover some ideas that trigger your own creative exploration.

SHARE THIS EXHIBITION

f t w i n

### EXHIBITION CATALOG

If at any point in your tour you want to see a catalog listing of all of the works in this gallery, exit FULLSCREEN mode and scroll down on any screen (except DETAIL VIEW screens) until you see a section that looks like this screenshot. Click on **VIEW EXHIBITION CATALOG**.

#### GALLERY | SELECTED WORKS

[BACK TO 3D EXHIBITION](#)

WELCOME to the Crystal Gallery of the 2022 National Exhibit

**SARAH WILEY**  
*Worship in Childhood - Dear your American #19 with Embroidery*  
18.2 x 12.2 x 1.2 inch (h x w x d)

**SARAH WILEY**  
*Inspiration for Mothers - Dear your American #19 with Embroidery*

**RACHEL WATKINS**  
*Crusier*  
17 x 17 x 1.0 inch (h x w x d)

**SHARON BERENSON**  
*Exuberant Faith in the Adoration*  
20.7 x 18 x 1.2 inch (h x w x d)

The EXHIBITION CATALOG will show you all of the items and wall messages in that gallery. This initial screen shows just the picture, the artist's name, title of the piece, and dimensions.

However, if you click on one of the items, you can see the detailed information about the piece, as well. See example below.

**LYNETTE MATON**

*The Rabbit Hole*  
17.7 x 24 x 0.7 inch (h x w x d)  
TENNESSEE VALLEY REGION  
REGION AWARD RECIPIENT

ARTIST'S STATEMENT - My family immigrated to the US from approximately 1940s in Europe. Just in the previous, last names were changed, and country of origin was lost. I am contemporary through a virtual lens where my Pinterest boards and Facebook groups reflect a blend of cultures and ethnicities. I think about experiences as a medium in which anything is possible and where the study of various embroidery techniques is an eager study to solve construction and technical problems. Down the Rabbit Hole was made with my passion in the embroidery world through social media to a virtual world. There are no physical barriers, and culture is from all over the world create an endless source of inspiration. In a dividing world, the lines between cultures become blurred and interpretations evolve. This piece is my view of the modern world that opens the door to all styles and techniques, leading us closer together regardless of ethnicity or culture.

### EXHIBITION CATALOG: EXPANDED INFORMATION

Clicking on a picture in the catalog will pull up its detail screen. Here you will be able to see the piece as well as its details and its accompanying artist's statement. If the piece has won an award, the description of the award can be accessed by clicking on the photo that shows its ribbon.

If you want to have a hard copy, you can also print out any of these catalog pages using your device's print function.

#### THROUGH THE NEEDLE'S EYE - CRYSTAL GALLERY | SELECTED WORKS

[BACK TO 3D EXHIBITION](#)

WELCOME to the Crystal Gallery of the 2022 National Exhibit

*A Message from the First President*

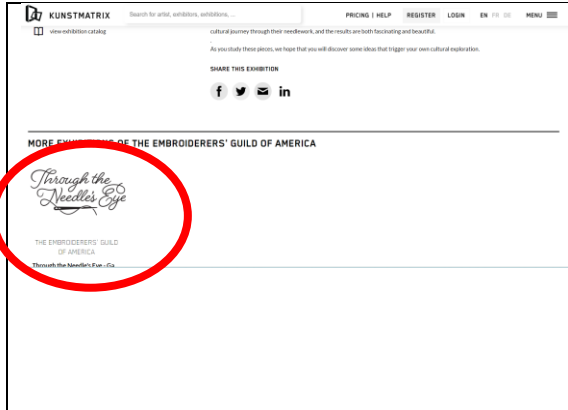
**SARAH WILEY**

**SARAH WILEY**

**RACHEL WATKINS**

If the artist has more than one piece in this exhibit, you can scroll down the page to see all of the other pieces by this artist that appear in either of the galleries.

If you want to go back to the gallery from the catalog, use the back arrow to get to the top of the catalog and click on the button that reads **BACK TO 3D EXHIBITION** between the title of the page and the first row of pictures.



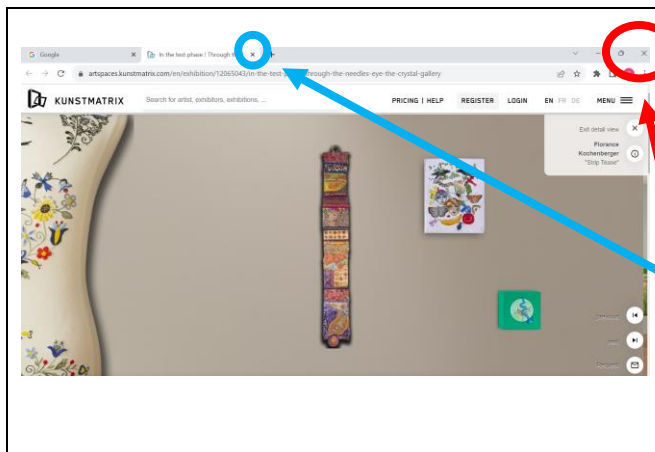
From the exhibition catalog, you have another way to access the other gallery: Scroll down on any screen (except DETAIL VIEW screens) until you see a section that looks like this screenshot. Underneath the section that gives you access to the catalog is another section that shows the other exhibits currently sponsored by EGA. In this case, the one shown is the other TNE gallery (the one you are not currently viewing). You can click on that image to go to the other gallery.

## AWARD-WINNERS

This show has awarded 16 ribbons: two National EGA awards, 3 Judge's Choice awards, 10 Region awards, and one Member-at-Large award. All award-winning pieces are identified by a ribbon displayed on or next to them. If you click on the ribbon, the information screen will include the details about the award.

## TO SIGN THE GUEST BOOK

After viewing the entire exhibit, please take a moment to sign our guest book. At the end of each gallery (next to the door that connects to the other gallery), you will see a THANK YOU sign. Clicking on that will take you to the guest book. We invite you to give us your feedback about both the works in the show and this new venture, the virtual exhibit itself. **Please note that going to the guest book will take you completely out of the exhibit, so it is best to do that when you are ready to leave.** Of course, we hope you will come back many times to examine these pieces so returning is always an option, but you will have to return to the EGA website to do so: <https://egausa.org/tne>



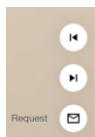
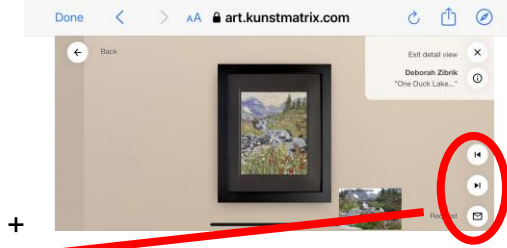
## TO EXIT THE EXHIBIT

You can exit the exhibit from either gallery at any time. Make sure you are not in Fullscreen mode so you can see the controls and menus above the exhibit screen. Simply click on the X in the upper right-hand corner above the exhibit screen OR on the X in the folder tab for the gallery. You might also see the word DONE in the upper left-hand corner above the exhibit screen; clicking on DONE will also take you out of the gallery.

## VIEWING EXHIBIT WITH PHONE OR TABLET

While the exhibit can be viewed in either portrait or landscape orientation, the viewer might have to rotate from one to the other during a session to get the best view or to access some of the controls.

**NOTE:** Each type and model of tablet or cellphone seems to work differently. The following steps may not work for your device but they may give you some ideas of what to look for. The menus and their locations in the galleries are the same for phones and tablets as for computers, but there may be a few differences. For example, phones and tablets may not offer the “fullscreen” option because they may come up in fullscreen mode automatically.

<p>There may be a <b>← Back</b> button in the top left corner of every screen if you are using a tablet or cellphone. Clicking on this button will take you completely out of the gallery and return you to the <b>ENTER EXHIBITION</b> screen. If you hit the <b>Back</b> button by mistake, you can simply click on <b>ENTER EXHIBITION</b> to return to the show.</p>	<p>If you hold your device in the landscape orientation, the up, down, left, and right arrows might not appear in the bottom right corner of the screens if they are below the viewing area. They are there – simply swipe up on your screen or rotate your device to portrait orientation.</p>
<p><b>CAUTION:</b> If you hold your device in portrait mode, the photos of the pieces may appear elongated. If that happens, switch to landscape mode.</p>	<p>Try zooming in to see the details of a piece by pinching and/or spreading your fingers on the picture.</p>
<p>On some devices, the <b>NEXT</b> and <b>PREVIOUS</b> buttons may not be identified with words; instead, they may look like arrow heads pointing either left or right. Your touchscreen motions may also help you move through the gallery.</p> 	
<p>To access the Exhibition Catalog from your tablet or cellphone, you have to leave the exhibit (use the <b>BACK</b> button in the top left corner of any screen) to return to the <b>ENTER EXHIBITION</b> screen. Scroll down below the title of the exhibit and click on <b>view exhibition catalog</b>. (There is a small book icon in front of this option.) You will have access to the same kinds of catalog information and pictures that are described on page 6 of this packet, but the items might be shown in a vertical array on the smaller devices. Scroll through the catalog to find what you are looking for. You can print any of this information if you want to, using your device’s print function.</p> <p>When you are finished looking at the catalog, you can scroll back up to the very top and click on <b>BACK TO 3D EXHIBITION</b> if you want to return to the <b>ENTER EXHIBITION</b> screen or you can just exit the catalog in the usual way (by clicking on <b>DONE</b> or on the back arrow in the top left corner of your navigation screen). On some devices, you might just have to swipe the screen out of your way to exit.</p>	

Please experiment with the various navigation options until you find one that works for you.