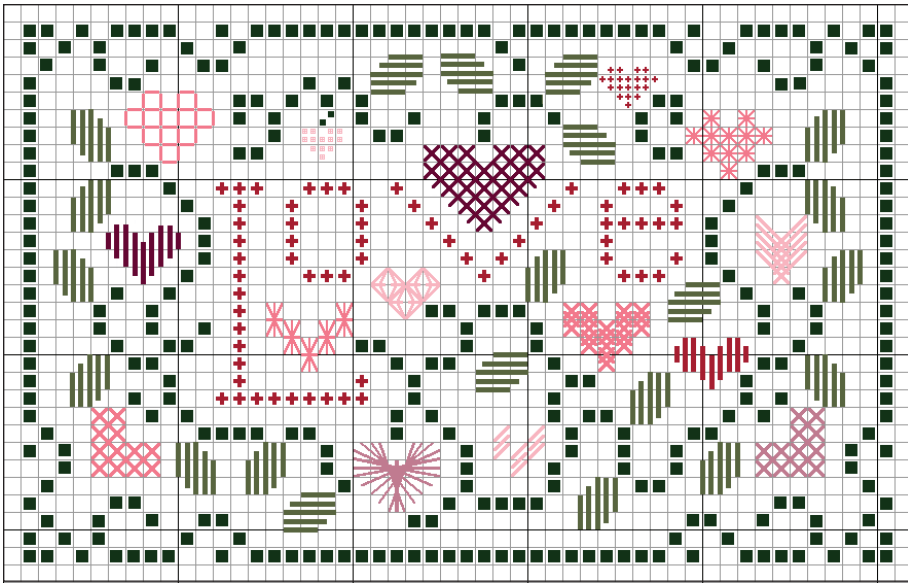
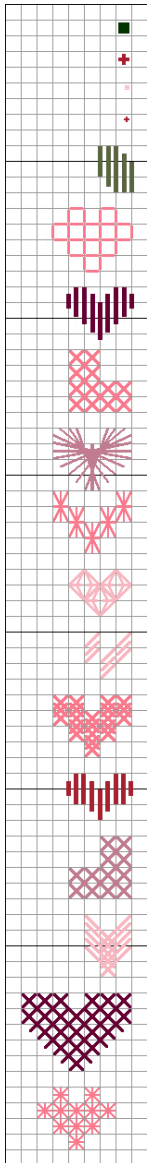




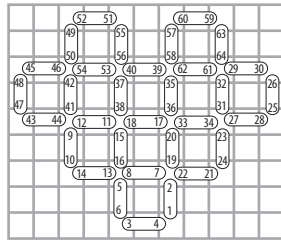
50 STITCHES WIDE X 31 STITCHES LONG
32 COUNT LAVENDER MIST BELFAST LINEN



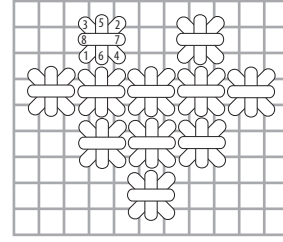
Gloriana Silk in: Ply Stitch



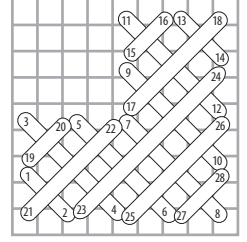
- 117 - Elizabethan Green 1 ply Cross Stitch
- 035 - Poinsettia 1 ply Cross Stitch
- 065 - Antique Pink 1 ply Cross Stitch Over 1
- 035 - Poinsettia 1 ply Cross Stitch Over 1
- 087 - Forest 2 ply Satin Stitch
- 091 - Raspberry Parfait 1 ply Four Sided Heart
- 012 - Rosewood 2 ply Satin Heart 1
- 091 - Raspberry Parfait 1 ply Trellis Heart 1
- 106 - Desert Rose 1 ply Rhodes Heart
- 091 - Raspberry Parfait 1 ply Elongated Smyrna
- 065 - Antique Pink 1 ply Queen Stitch Heart
- 065 - Antique Pink 2 ply Diagonal Heart
- 091 - Raspberry Parfait 1 ply Plaited Cross Heart
- 035 - Poinsettia 2 ply Satin Heart 2
- 106 - Desert Rose 1 ply Trellis Heart 2
- 065 - Antique Pink 1 ply Fern Stitch Heart
- 012 - Rosewood 1 ply Sprats Head Heart
- 091 - Raspberry Parfait 1 ply Smyrna Heart



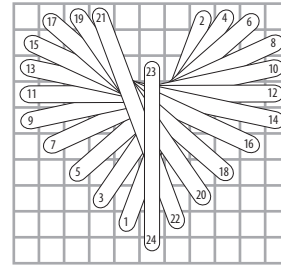
Four Sided Heart



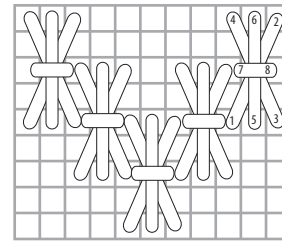
Smyrna Heart



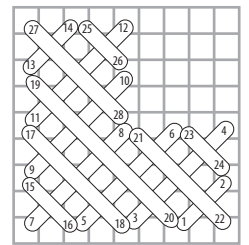
Trellis Heart 2



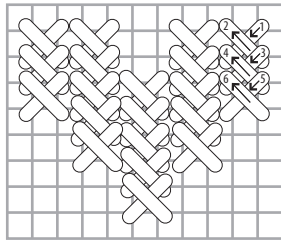
Rhodes Heart



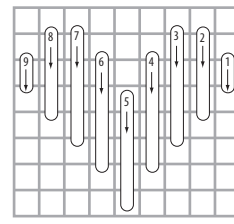
Elongated Smyrna Heart



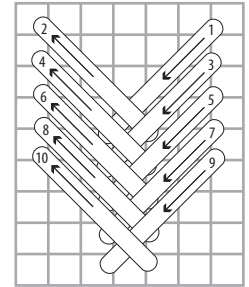
Trellis Heart 1



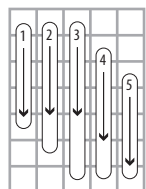
Plaited Cross Heart



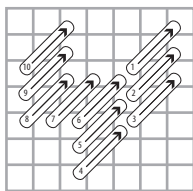
Satin Heart 1



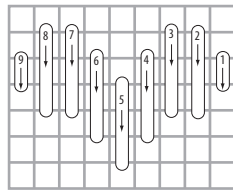
Fern Stitch Heart



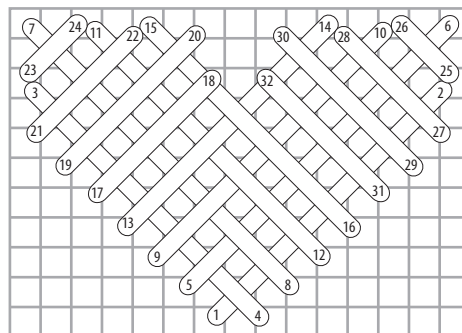
Leaf



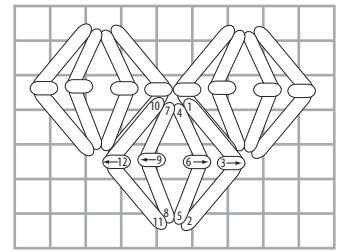
Diagonal Heart



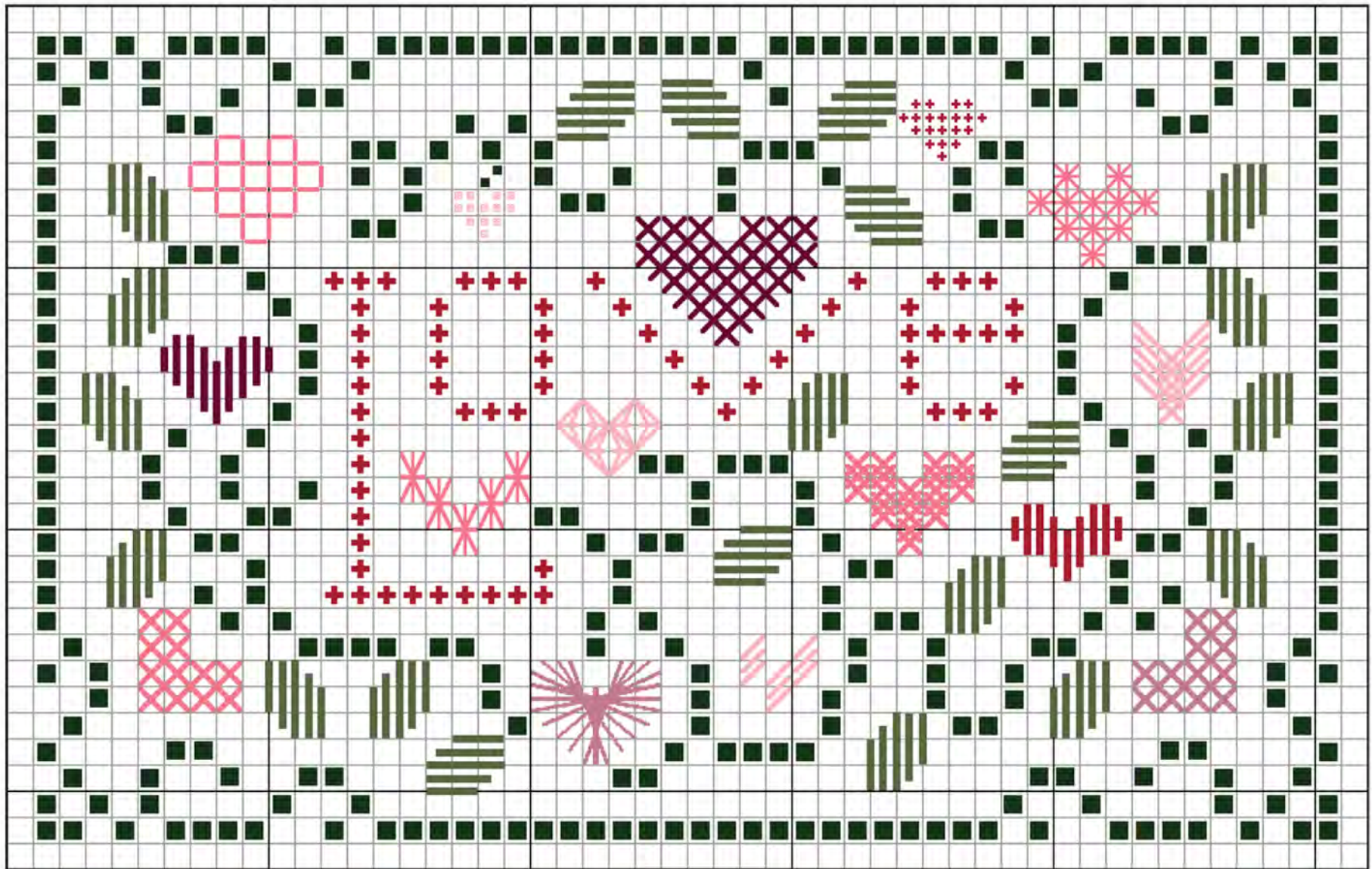
Satin Heart 2



Sprats Head Heart



Queen Stitch Heart



50 STITCHES WIDE X 31 STITCHES LONG
32 COUNT LAVENDER MIST BELFAST LINEN



THE DRAWN THREAD
drawnthread.com