

BRITE EYES



Margaret Bendig

Copyright 2003 ~ All rights reserved.

This design, or any part of this chart/design may not be reproduced in whole or in part in any form without express written permission from Margaret Bendig. ©2003

margaret.bendig@gmail.com

BRITE EYES

SUPPLIES:

8" square 18-count bright yellow mono canvas -

148F-34 Black Ribbon Floss - Shimmer Blend YLI Thread or Neon Rays Plus N01 - black

148F-35 Orange Red Ribbon Floss - Shimmer Blend or Neon Rays Plus NP83 - Halloween Orange

148F-36 Bronze Red Ribbon Floss - Shimmer Blend or Neon Rays Plus NP29 - Rust

148F-40 Light Purple Ribbon Floss - shimmer Blend or Neon Rays Plus NP07 - purple

#005 Kreinik Braid size 16 - black #005 Kreinik Braid size 12 - black

#052F Kreinik Braid size 12 - fluorescent white or Kreinik Braid #5760 size 12, white

#054F Kreinik Braid size 12 or 16 - fluorescent yellow (15") or Kreinik braid #091, yellow

#053F Kreinik Braid size 12 or 16 - fluorescent green (15") or Kreinik braid #015, chartreuse

2 pair 8" stretcher bars & tacks for mounting

#22 or #24 tapestry needles

This is a little Halloween door hanger or ornament and if you have a spooky tree around that needs decorating, it will fit right in. The fluorescent threads will make it a fun surprise to find in the dark. When the brightness fades, simply hold the ornament up to a lighted incandescent light bulb and recharge the threads. This is just a fun little piece to add to the spooky holiday spirit.

Go through your stash and pull any threads you think will work for this design. It is a **STASH PIECE**. The only threads used for more than small areas are the two threads in the border and the thread used for the ghost. The legend on page 4 lists the threads and the stitches used in the original. In your stash I am sure there are other threads you may substitute, possibly Treasure Braids for Kreinik braids, or size 5 perle cotton for braids or other colors that you prefer. The fluorescent threads may easily be substituted with ordinary metallic threads or any thread you like. Some of the threads listed may be unavailable as this is a project from early in this century (sounds weird, doesn't it?). Be sure to note your substitute in your instructions. Sometimes we put projects down for a while, when we get it out again to complete, we might not recall what we were changing. This is the voice of experience; it is easier to follow your notes than start from scratch.

If you do not have bright yellow canvas, select another color. A change of the border threads is an easy substitute. Any color of canvas you have may work, pull the desired threads, lay them across the canvas to help with your decision. If you only have white canvas, there is a wonderful tutorial on the EGA Website "How to Colorwash Needlepoint Canvas". This is a great source provided by Kate Gaunt for all of us to use and learn from to enhance our work. Her directions and photos will make your experience so comfortable and successful. If "color washing" the canvas, do it before beginning to stitch! Here is the link <https://egausa.org/app/uploads/2018/02/How-to-Colorwash-Needlepoint-Canvas.pdf> Thank you, Kate!

The Master Chart is located on page 3 of these instructions. To chart with symbols for the threads and colors, I used a cross stitch program. What that means to you is that **each square on the chart represents one canvas thread**. The legend for the pattern is on page 4 and there are notes in the legend to indicate stitches used for each motif in the design. On the following pages are diagrams for stitches. Enjoy!

The second page is standard in my patterns, just my stitching tips and methods that I use every time I stitch. Remember, a Slanted Satin Stitch is just an elongated Continental Stitch, use the same chart for directions.

BRITE EYES

CONTINENTAL STITCH

Follow the chart below for the correct stitching **directions** for **Continental Stitch** (Tent Stitch). The arrows indicate the direction in which the stitch is moving. For example, to stitch from the top of the canvas to the bottom, the needle comes up in the canvas through the lower left corner of the intersection and re-enters through the upper right hole. The second stitch comes up below the first.

Always come up through the canvas on the odd numbers and re-enter on the even ones.

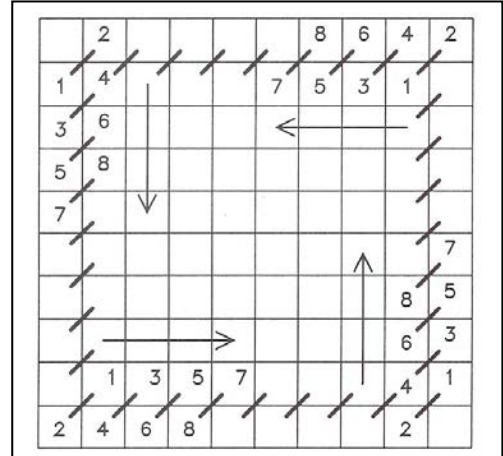
When stitching from:

left to right - follow the directions at the bottom of the chart

right to left - follow the directions at the top of the chart

top to bottom - follow the directions on the left side of the chart

bottom to top - follow the directions on the right side of the chart



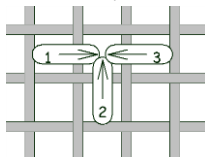
ANCHORING THE THREAD

There are many ways to anchor your thread for stitching. My favorite anchoring methods are the "T" Stitch and the "L" Stitch. You may be more comfortable with a waste knot but give this method a try. These methods do not work for Continental Stitch, work over the thread tail in that instance.

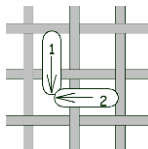
When working a large stitch, the "T" stitch is the perfect anchor. The "L" Stitch works very well under satin stitches, especially in projects that will not receive a great deal of handling. The backstitch is wonderful for beginning ending threads where the stitches are narrow.

To begin the "T" or "L" stitches hold the thread tail on the front of the canvas and pass the needle through the canvas at the center of the stitch. Bring the needle up at 1 down at 2 into the center for the "L" stitch and continue to 3 for the "T" stitch. If you are working with an especially slippery thread and are a little worried about it working loose, enter the canvas from all 4 directions. Tug the knot on the top of the canvas and the thread from the bottom to tighten the stitch. Snip the knot off, even with the top of the canvas. Bring the needle up at your starting point and begin to stitch.

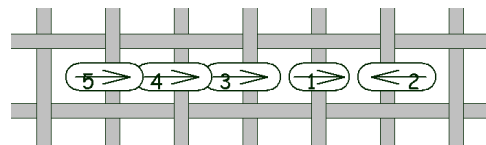
You must count the pattern to be sure that the anchoring stitch will not fall between stitches or motifs, but under the area to be worked. After the thread is anchored, bring the needle back up through the stitch. With your scissors flat against the canvas, clip the tail from the front of the piece. Below are diagrams for all three stitches.



T-Stitch



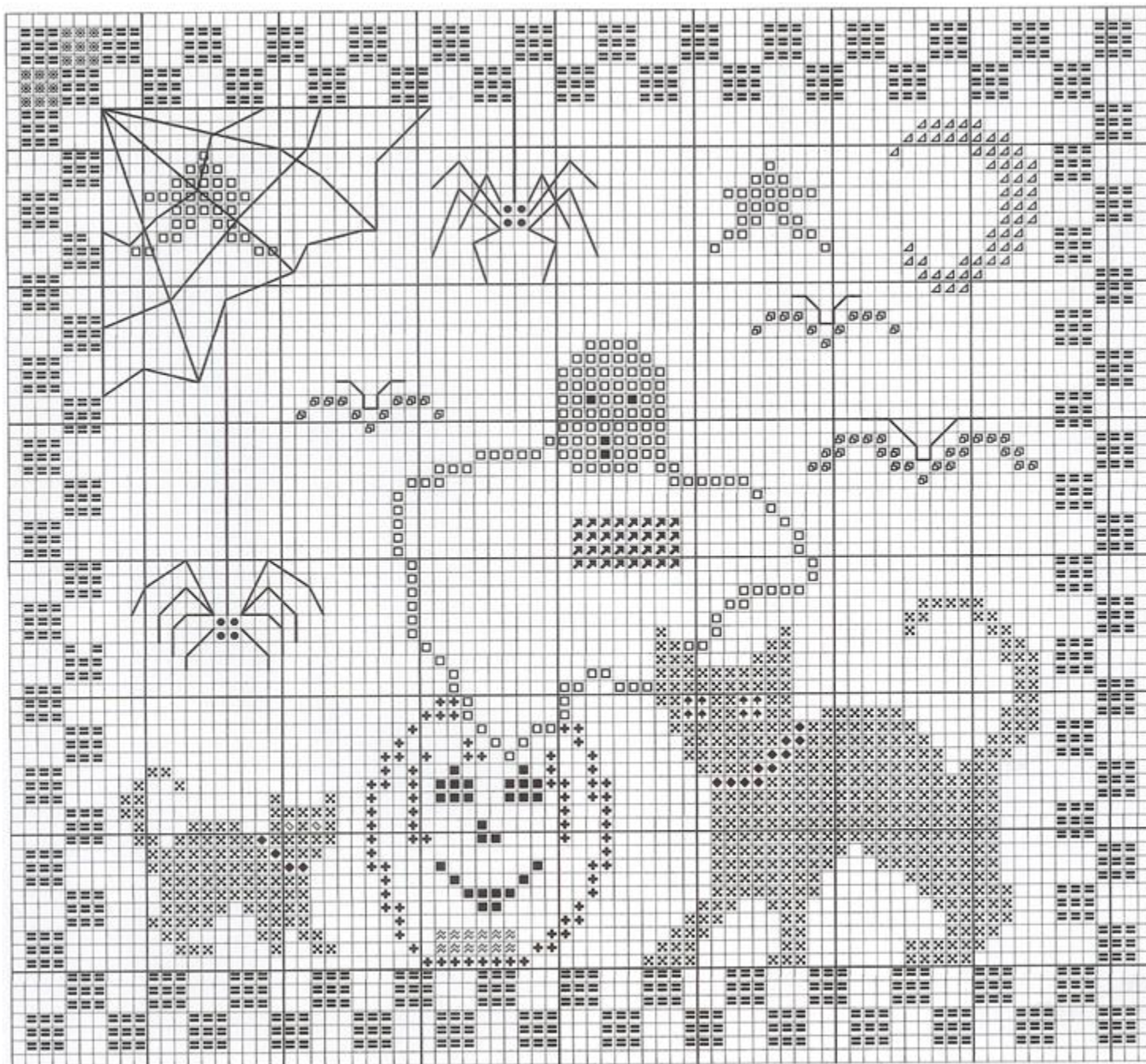
L-Stitch



Back Stitch

These stitches may also be used to end a thread, but you must be careful that your work will cover the anchoring stitches. Sometimes there is no other choice but to run the ending thread under the back of your finished work. Be careful not to disturb the stitches on the front of the work. The backstitch is especially good for hiding an ending thread. If possible, carefully separate a few stitches in the pattern and work the backstitch under the pattern.

BRITE EYES



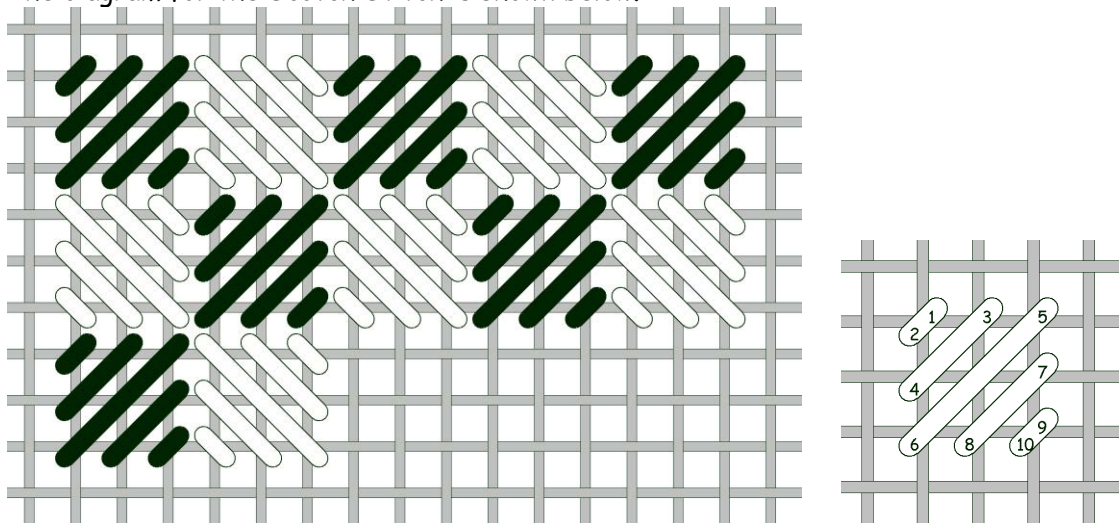
The border of this design is composed of alternating Scotch Stitches. All the black stitches are worked in one direction and the purple in the opposite. The chart shows the symbol for the black around the entire piece. In the upper left corner is the symbol for the purple. In the rest of the chart the squares for the purple stitches are left blank for ease in reading a very busy chart. The black stitches are worked with Black Ribbon Floss - Shimmer Blend #148F-34 and the purple are stitched with #148F-40 Light Purple Ribbon Floss - Shimmer Blend

BRITE EYES

LEGEND

Sym	Thread	Stitch
	148F-34	Scotch Stitch
	052F	Satin Stitch
	005-16	Smyrna Cross
	005-12	Cross Stitch over 1 thread
	005-16	Continental Stitch/ Basketweave
	148F-36	Continental Stitch/Basketweave
	053F	Continental Stitch/ Basketweave
	005-16	Continental Stitch/ Basketweave
	148F-40	Scotch Stitch
	148F-35	Mosaic Stitch
	054F	Continental Stitch/Basketweave
	052F	Nobuko Stitch
	052F	Continental Stitch/Basketweave
	054F	Smyrna Cross
	005-12	Backstitch

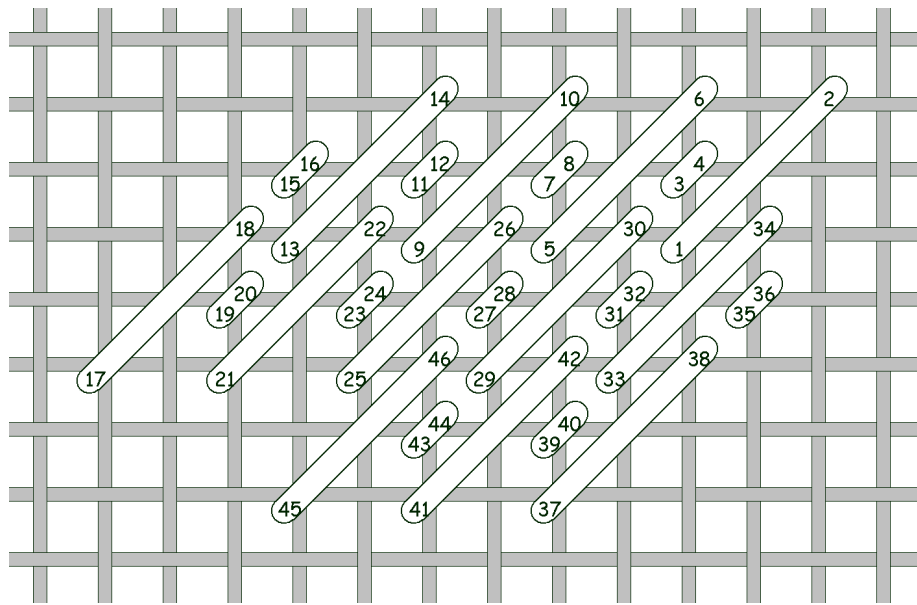
The diagram for the Scotch Stitch is shown below.



STARS - The stars are stitched with the fluorescent white Kreinik braid - please note that the star in the upper left-hand corner is worked before the spider web is laid down on top of it. On your chart you have an additional star in front of the moon that is not on the photograph of my piece. The choice is yours if you would like more "illumination".

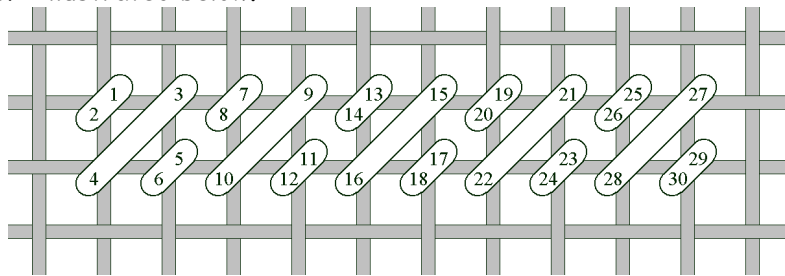
GHOST - The ghost is stitched with #052F white fluorescent braid. Note on the head of our little spook it is filled in with the symbol for Basketweave or Continental Stitch. The entire body is outlined with Continental Stitches, but the inside is worked in Nobuko Stitch, diagrammed on the next page. I did not fill in the entire chart for ease in reading. Begin this stitch in the widest area of the design and go back and compensate later.

BRITE EYES



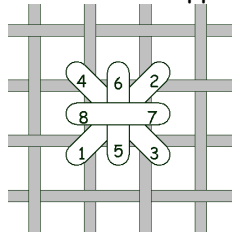
NOBUKO STITCH

PUMPKIN - The Pumpkin is outlined in dark orange Ribbon Floss - Shimmer Blend and fill the inside with Mosaic Stitch - illustrated below.



MOSAIC STITCH

SMYRNA CROSS - There are Smyrna Crosses in the upper spider and the eyes of the larger cat.



SMYRNA CROSS

NOTES:

Begin by stitching the border. There are 25 Scotch Stitches on the sides and 27 across the top and the bottom of the ornament, counting the corners in both directions.

The Large Black Cat sits on top of the border and the Small Black Cat floats one thread above the border on the left side of the design. Stitch the cats and then put in the Pumpkin. After the Pumpkin add the Ghost - outlining him with Continental Stitch.

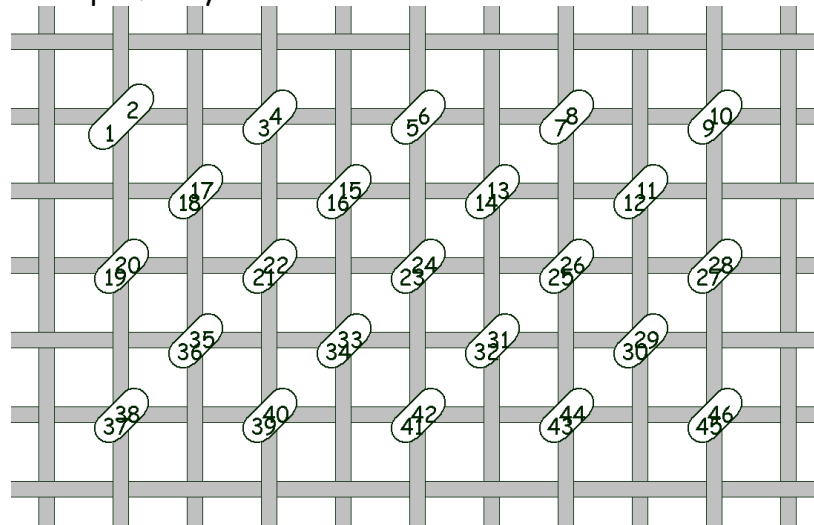
BRITE EYES

Stitch the Moon in long straight stitches moving from lower left to upper right with the size 16 braid #052F. The stars are stitched with the same thread.

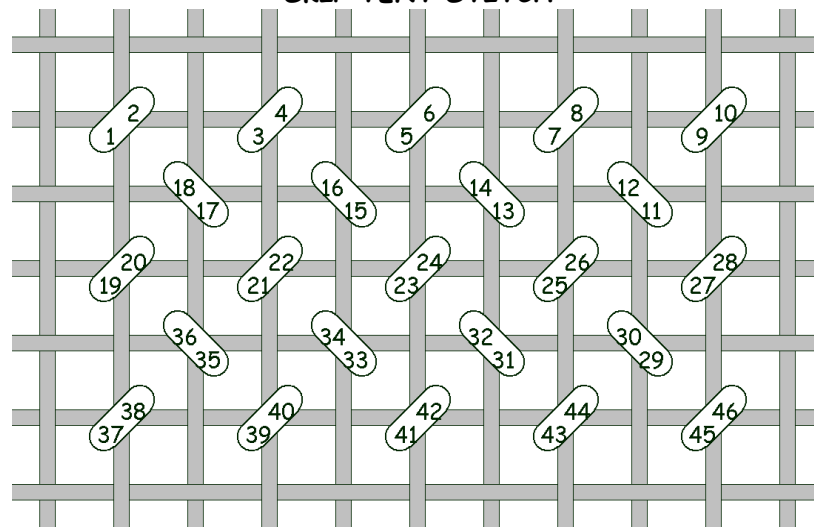
Now its time for Spiders and Bats! The top spider is stitched with size 16 braid #005 and so is his hanging thread. The smaller spider is stitched with size 12 braid #005 as is the spider web. Stitch the spiders with the same size black Kreinik briad used in the legs, maybe a Smyra Cross or a 3mm bead or a size that works best for the spider.

TA — DAH! You are finished!

If you want a background, choose your favorite small pattern and a background thread to complement your selected canvas. Some students fill the background before adding the spiders and the spider web. Work the webs and spiders on top of the background. I suggest an open background like Skip Tent or Reversing Skip Tent but there are many others that will work perfectly.



SKIP TENT STITCH



REVERSING SKIP TENT STITCH