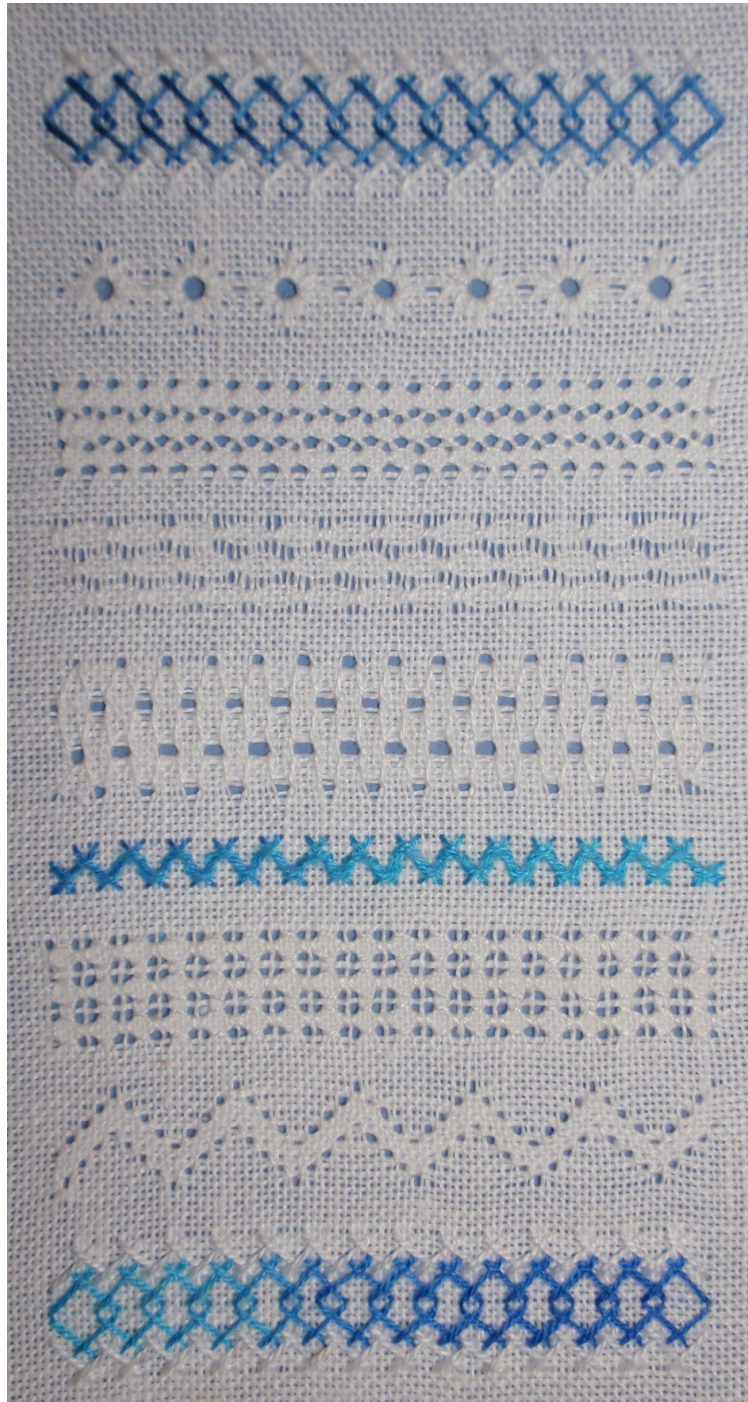
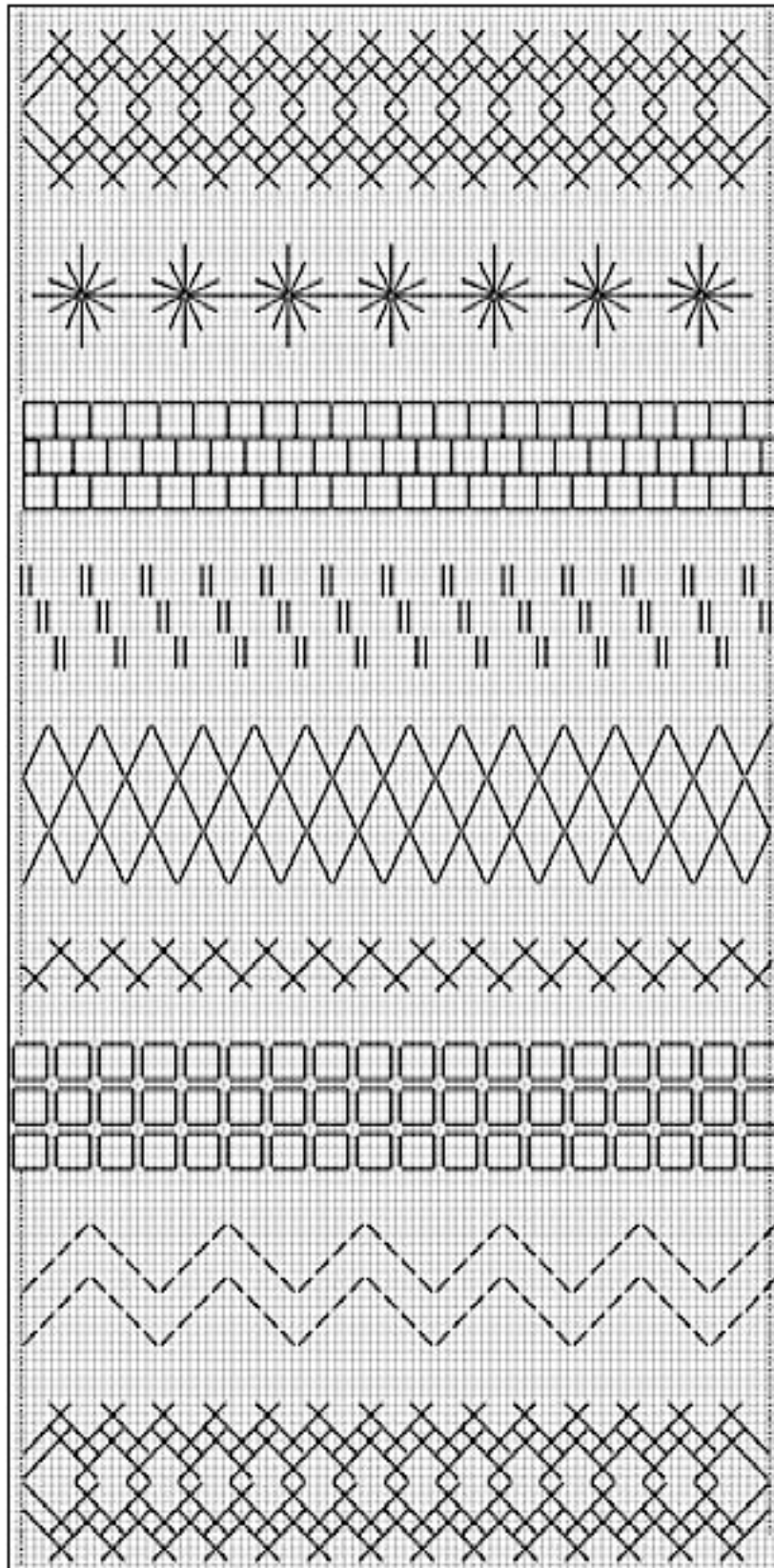


Herringbone and Holes

Jane Ellen Balzuweit



Master Chart



Herringbone and Holes

Design size: 3" X 6"

FABRIC: Cashel Linen 28 count 8" X 10"

THREAD: 12 yards (approx.) pearl cotton size 12, white
2 1/2 yards pearl cotton size 8, white

Model: 1 yard Waterlilies by Caron, your choice of color
or substitute 3 yards pearl cotton size 12 any color
or 1 1/2 yards of stranded cotton floss or silk floss, solid or
over-dyed (Note: Most any colored thread of this
approximate weight will work in this project.)

NEEDLES: tapestry sizes 22, 24 and 18 (for enlarging holes)

EXTRAS: Hoop or 8" X 10" stretcher bars

GENERAL INSTRUCTIONS

1. All pulled stitches are worked with a single strand of pearl cotton size 12, using #24 or #22 tapestry needle. A larger needle helps to enlarge the hole. The Herringbone is worked with 2 plies of silk or floss or 1 strand of pearl cotton size #12.
2. Come up at the numbered or lettered end of the stitch and go down at the arrow end.
3. Keep the piece taut in either a wrapped hoop or on stretcher bars.
4. There are two options to starting a new thread:
 - a) An away waste knot: This knot is placed away from the stitching area (about a 3" tail). After a small amount of stitching is completed, cut the knot and rethread the needle. Place the thread under the first stitches.
 - b) A in-line waste knot: A knot is placed in the path of the stitching and is worked over the thread to the knot which is then cut off.

With either method, be careful not to pass thread under a hole.

5. Ending a thread: Take end of thread behind the last stitches made. It is best to leave the last 3 or 4 stitches loose in order for the needle and thread to pass behind them. Once thread is behind these stitches the tail can be pulled tight.
6. Pull stitch by pulling the thread. I pull this thread when I go down and again when I come up.
7. **REMEMBER: COUNT THREADS, NOT HOLES.**

INSTRUCTIONS

1. With a light colored sewing thread or floss, place a basting stitch or running stitch along the length of the fabric, about 2 1/2" from the left fabric edge. Count 87 fabric threads to the right and place a second basting stitch on the right side.
2. See Master chart for stitch placements.

BAND 1: HERRINGBONE: PEARL COTTON SIZE 8 AND COLOR THREAD 2 PLIES OF FLOSS OR SILK AND 1 OF PEARL #12, TAPESTRY NEEDLE #24 & 22

3. Using pearl cotton size 8 and starting approximately 2 1/4" from the top of the fabric, work a Herringbone stitch over 6 fabric threads. Follow chart #1, start at the left hand basting stitch and work 14 stitches, ending at the right hand basting stitches.
4. Following chart #2 with a colored thread and #24 needle (2 plies of silk or floss, or 1 strand of pearl 12), work second row beginning 3 threads below the first row, working from left to right. Gray stitches are the previous stitches. Chart #3 diagrams the next row with pearl cotton size 8 and chart #4 is worked in the colored thread. Gray stitches are the previous stitches.

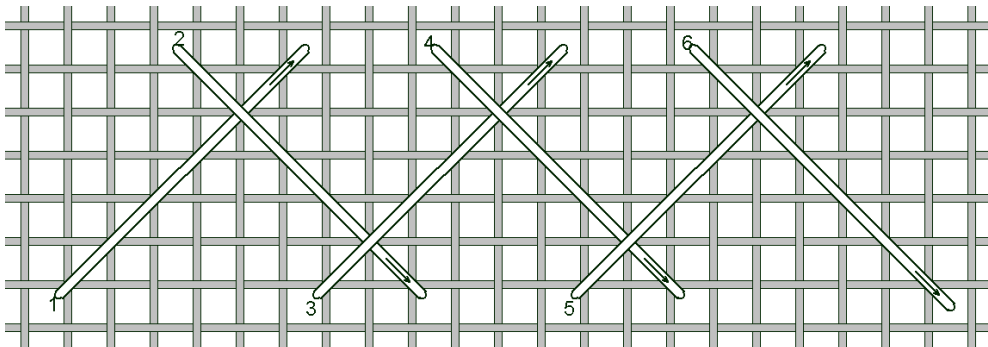


CHART #1

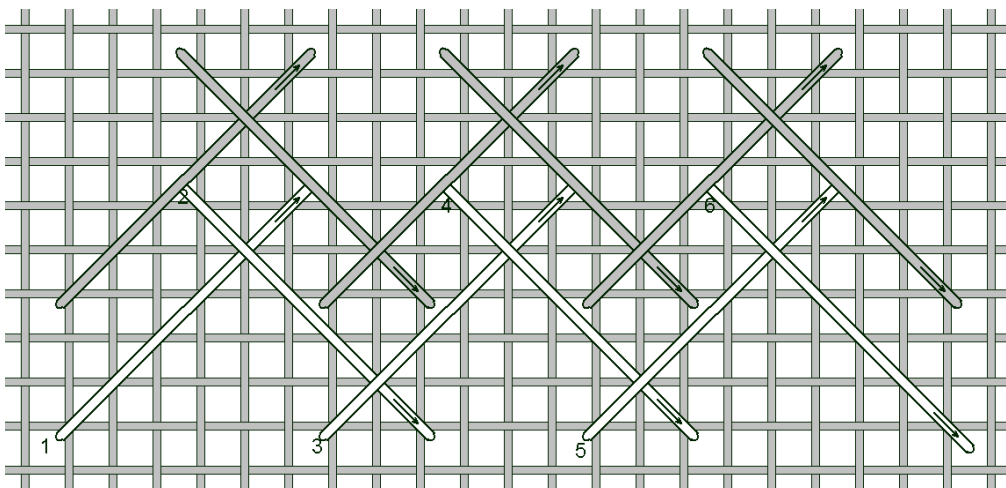


CHART #2

BAND 1: HERRINGBONE – continued

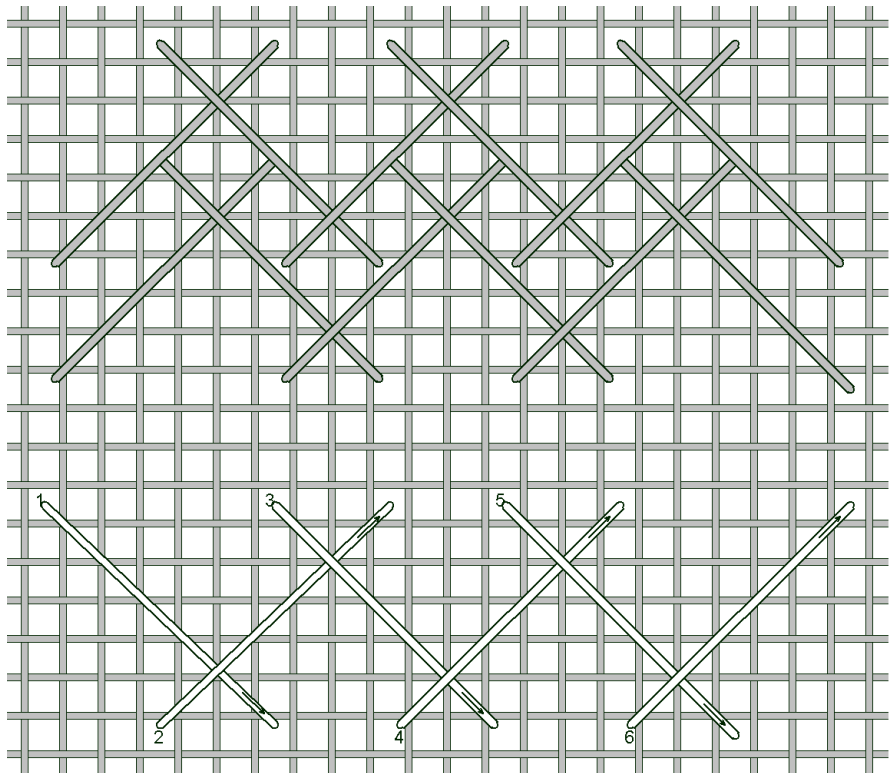


CHART #3

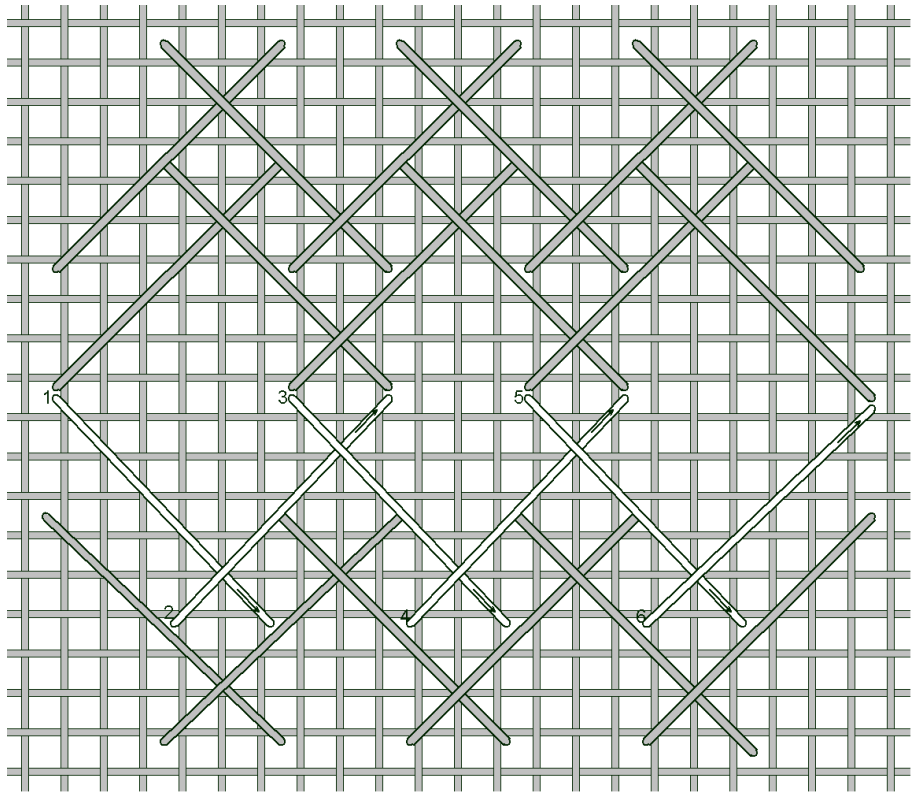


CHART #4

BAND 2: EYELETS: PEARL COTTON SIZE 12 WHITE, TAPESTRY NEEDLE #22

5. Start 12 fabric threads below Herringbone stitch and 2 fabric threads to the right of the left basting thread and work the eyelets, following chart #5. The 7 eyelets are worked across the row by stitching the top half from left to right and the bottom half from half right to left. **Pull each stitch tightly.** Chart #6 diagrams the second row.

*** Always go down into the center.**

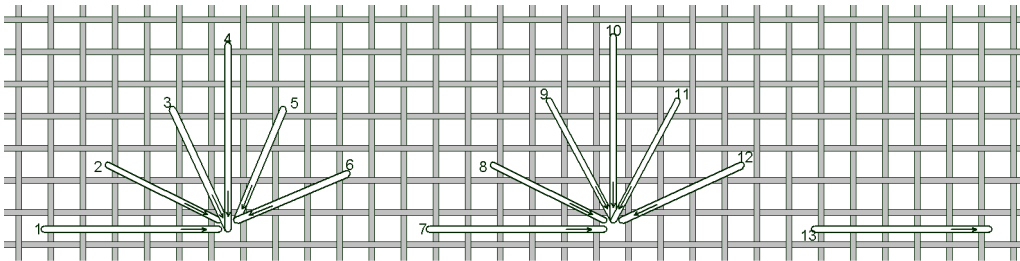


CHART #5

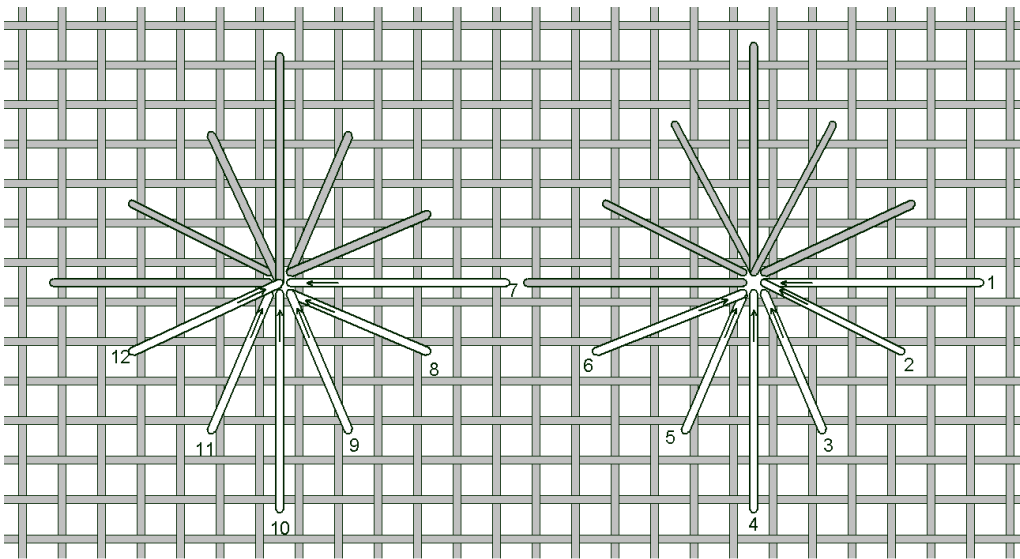


CHART #6

BAND 3: SPLIT FOUR-SIDED STITCH: PEARL COTTON SIZE 12 WHITE,
TAPESTRY NEEDLE #22

6. Start 10 fabric threads from the bottom of the eyelet and one thread to the right of the basting thread on the **right hand side**. Work a four-sided stitch over four threads, chart #7. Work 22 stitches with **tight tension**.
7. Chart #8 diagrams second row, working from **left to right**. Start with the first four-sided stitch worked over 2 horizontal stitches, then work all stitches over 4 fabric threads until the last which is over 2 fabric threads. The bottom stitch of the first row shares channel with the top stitch of the second row.
8. Step #6 for the first row is repeated for the third row, chart #9.

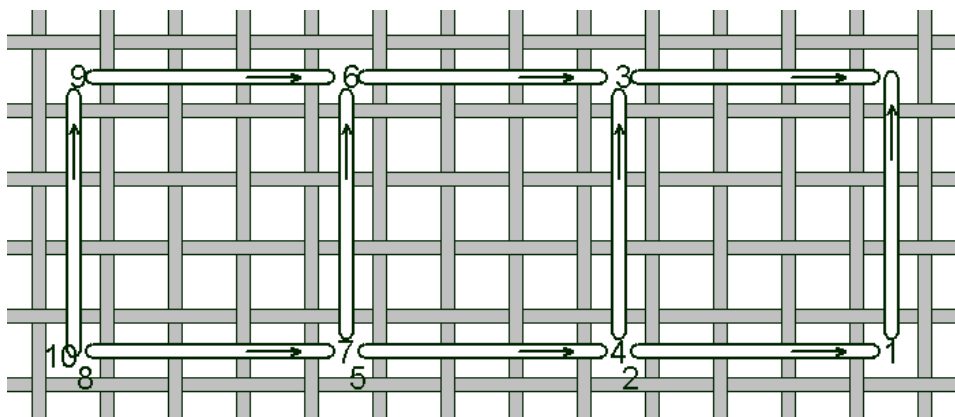


CHART #7

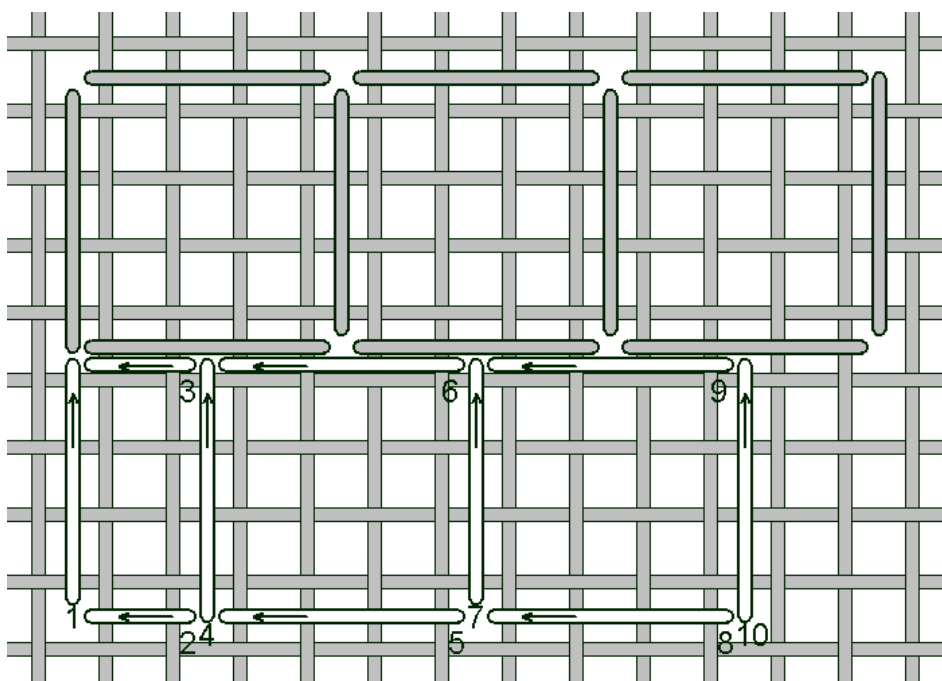


CHART #8

BAND 3: SPLIT FOUR-SIDED STITCH - continued

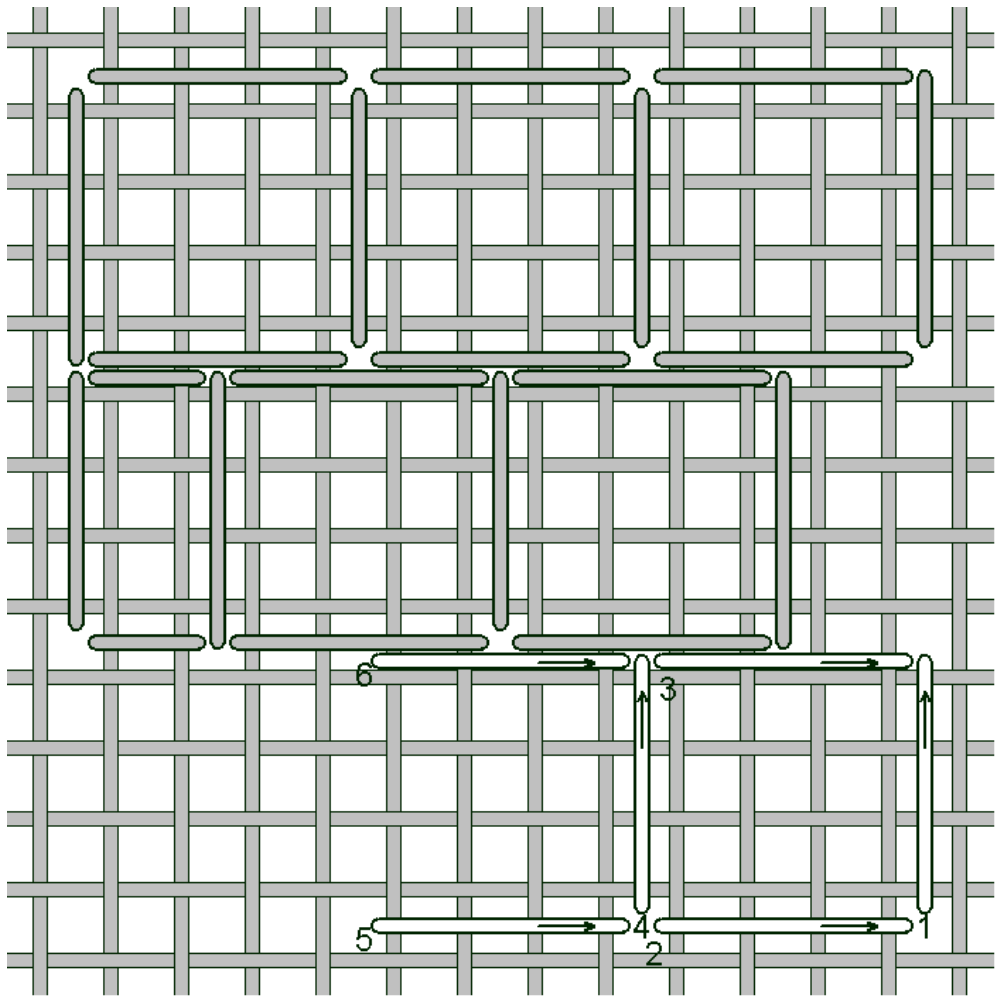


CHART #9

BAND 4: PULLED SATIN STITCH: PEARL COTTON SIZE 12 WHITE,
TAPESTRY #22

9. Starting 10 stitches below Band 3 and at the left basting stitch, work 2 satin stitches over 4 fabric threads. Skip 6 fabric threads and repeat. Following chart #10, work 13 sets of stitches with **tight tension**.
10. Following chart #11, work second row **from right to left**, off-setting the pairs of stitches by 1 thread.
11. Work third row from **left to right** again offsetting by 1 thread.

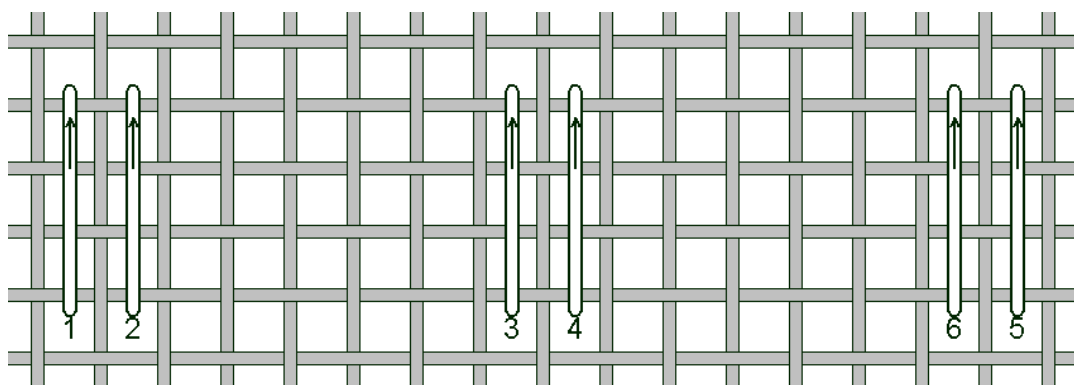


CHART #10

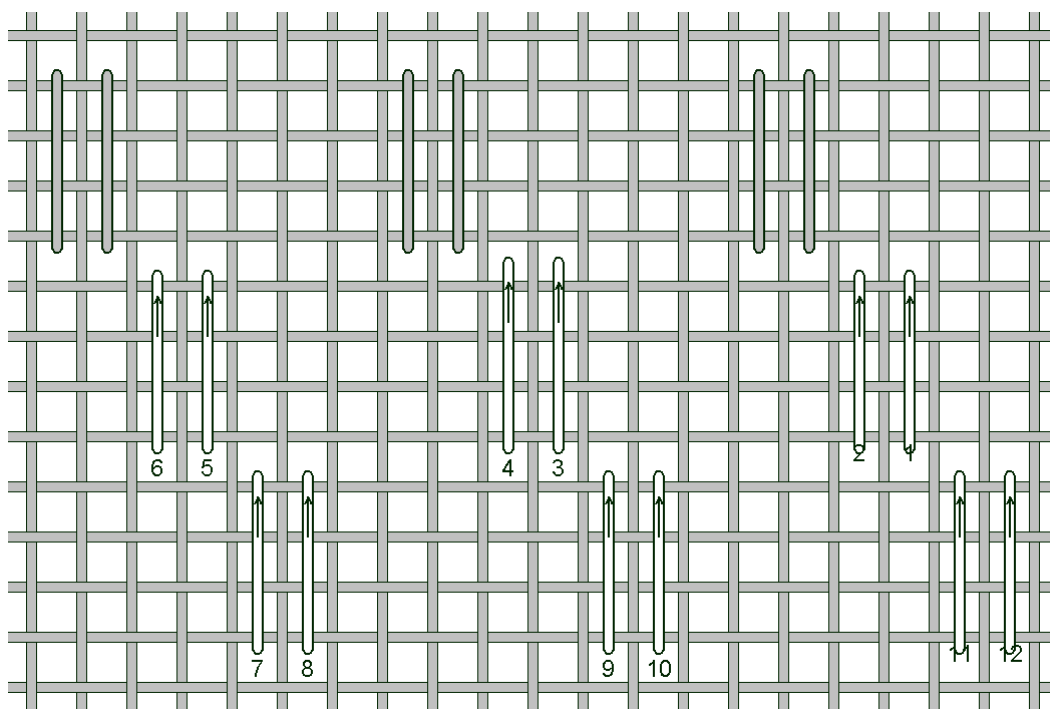


CHART #11

BAND 5: PULLED WAVE STITCH: PEARL COTTON 12 WHITE, TAPESTRY #22

12. Start 6 threads below the pulled satin stitch and 3 fabric threads from the left side basting stitch. Following chart #12, come up at #1 and down and 3 fabric threads to the left and six fabric threads down. Carry thread across the back six threads and come up at #2 and go down sharing hole with #1. Come up at #3, 6 fabric threads to the right and go down sharing hole with #2. Pull all stitches with **tight tension**.

* **Take a small stitch under last stitch in order to come up in a hole you just went into.**

13. Second row, chart #13, work from **right to left** sharing holes. Repeat third row from **left to right**.

- **This stitch gives you straight stitches on the wrong side. The best way to secure start and ending threads is on a diagonal so not to cover a hole.**

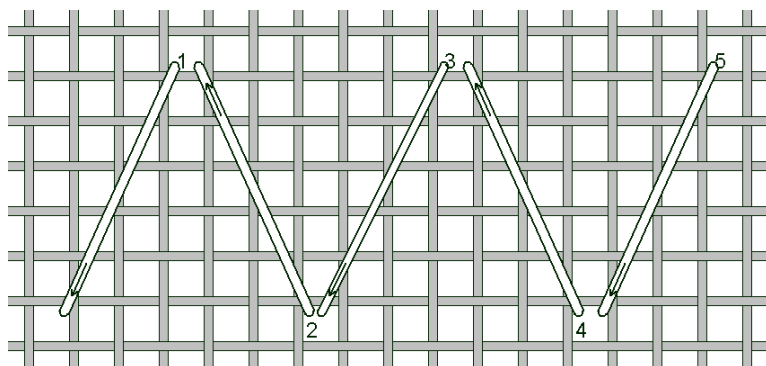


CHART #12

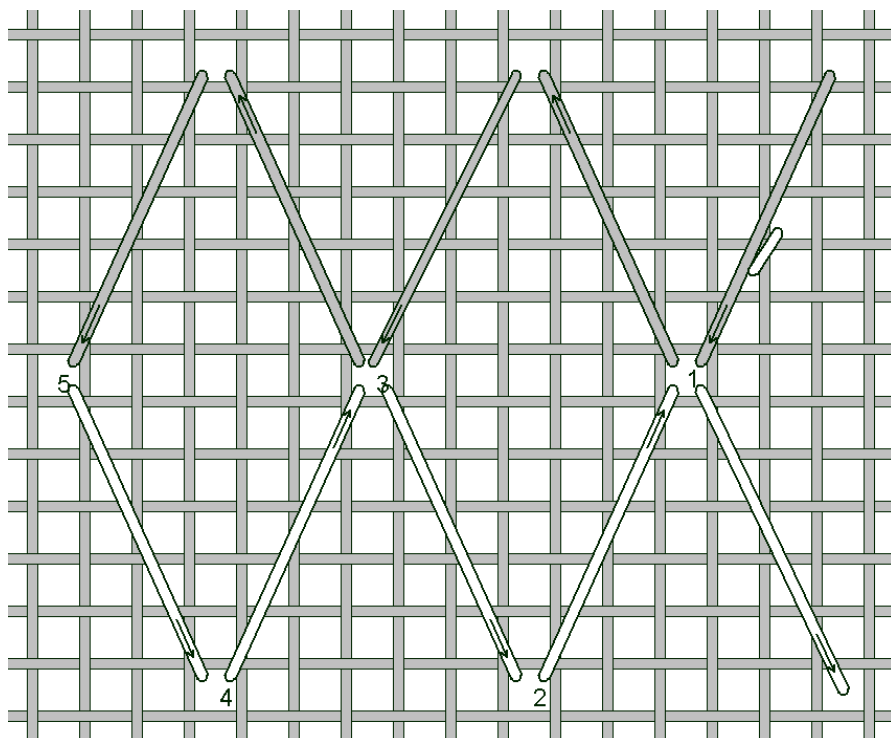


CHART #13

BAND 6: WRAPPED HERRINGBONE: COLORED THREAD, 2 PLIES OF SILK OR FLOSS OR ONE STRAND PEARL 12, TAPESTRY NEEDLE #24

14. Following charts #14 and #15, work a row of Herringbone stitch. Start 12 fabric threads below band 5 and 3 fabric threads to the right of the left-hand basting thread.
15. When the row is completed at the right hand side, bring needle back to the front 1 fabric thread below the ending stitch and wrap the Herringbone stitch.

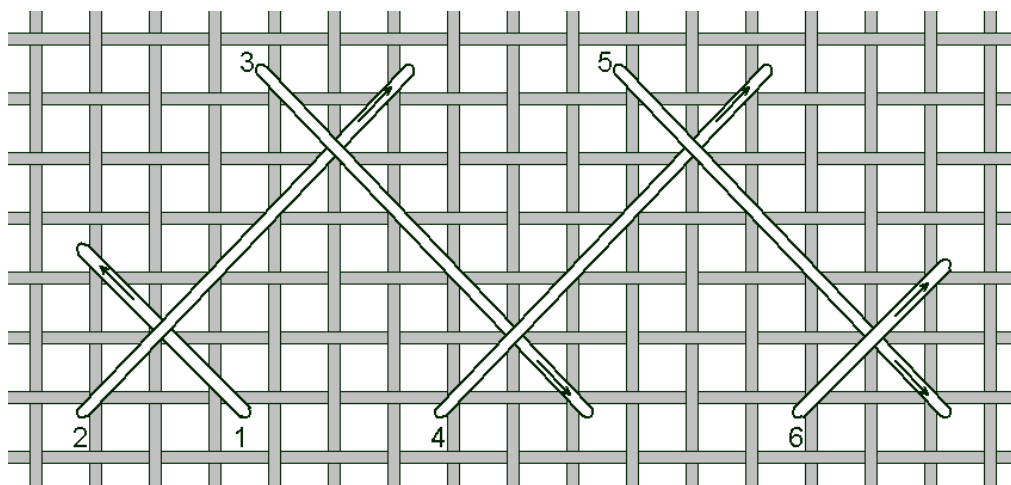


CHART #14

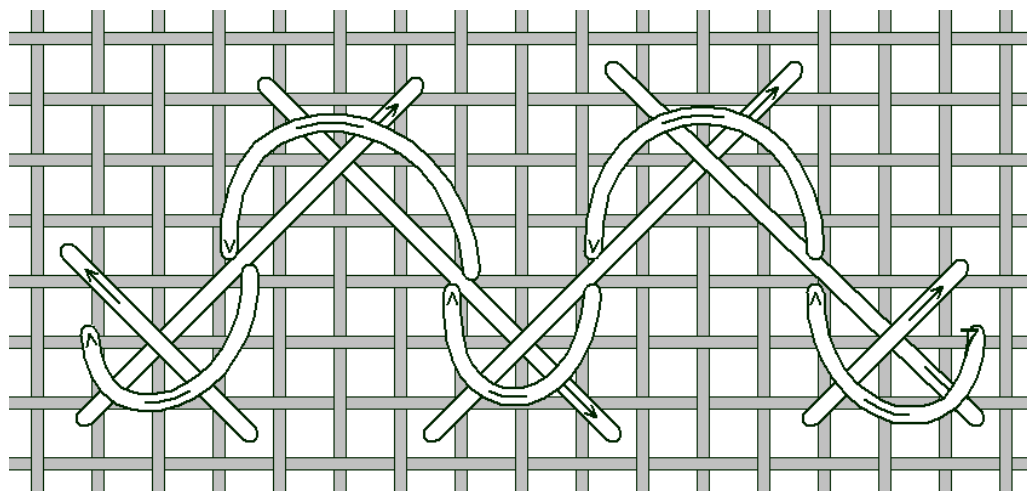


CHART #15

BAND 7: WINDOW PANE, SPACED FOUR SIDED STITCH:

PEARL COTTON #12, WHITE, TAPESTRY NEEDLE #22

16. Start 10 fabric threads below Herringbone stitch and **one thread to the right of the right side basting thread**. Work 18 four sided stitches with one blank thread between each square.
17. Chart #17 diagrams the second row, starting at the **left hand basting stitch** and 5 fabric threads below previous stitch leaving a blank thread. The blank threads form a cross between the 4 four-sided stitches.
18. Repeat step #16 **on the right** and again skip one fabric thread between the two rows. Use a **tight tension**.

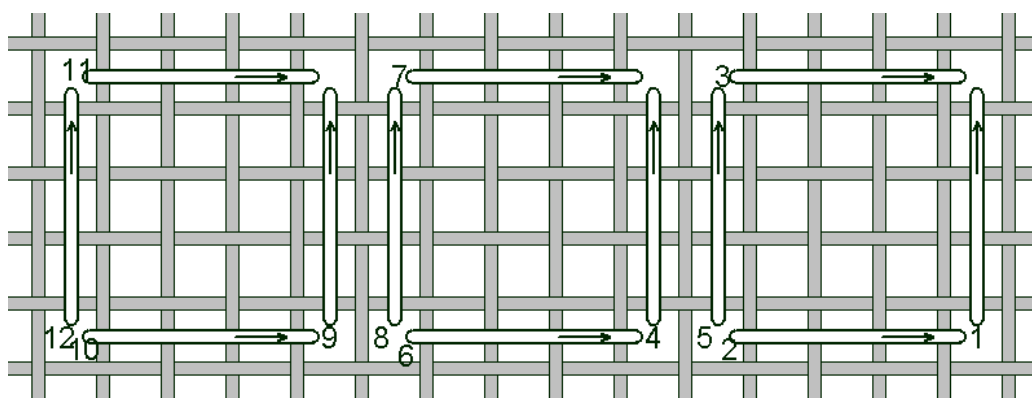


CHART #16

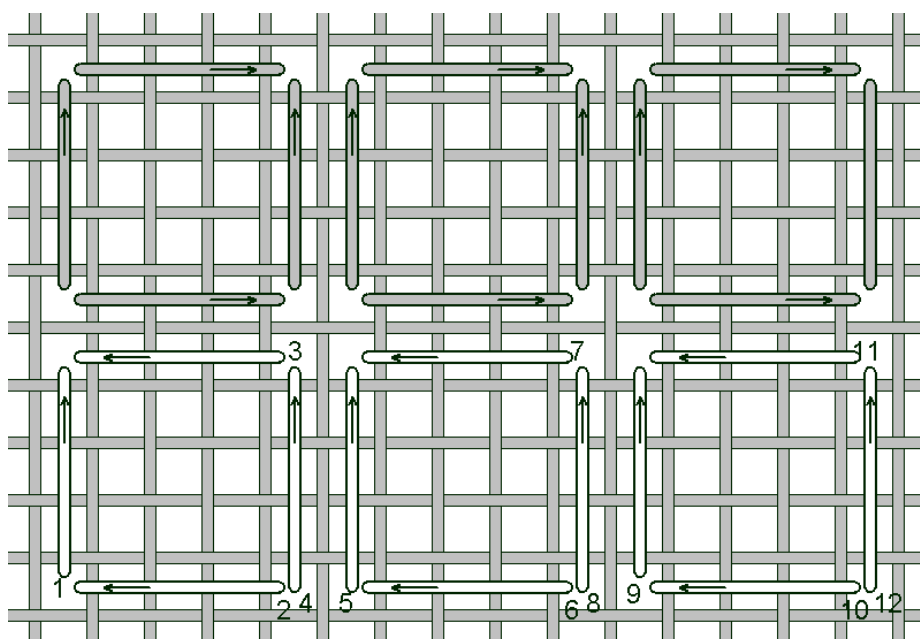


CHART #17

BAND 8: DIAGONAL, DOUBLE BACK STITCH:

PEARL COTTON #12 WHITE, TAPESTRY NEEDLE #22

19. Start 20 fabric threads below band 7 at the left side basting stitch. Chart #18 diagrams the double back stitch diagonally. Pull with **tight tension**. There will be 6 top peaks.

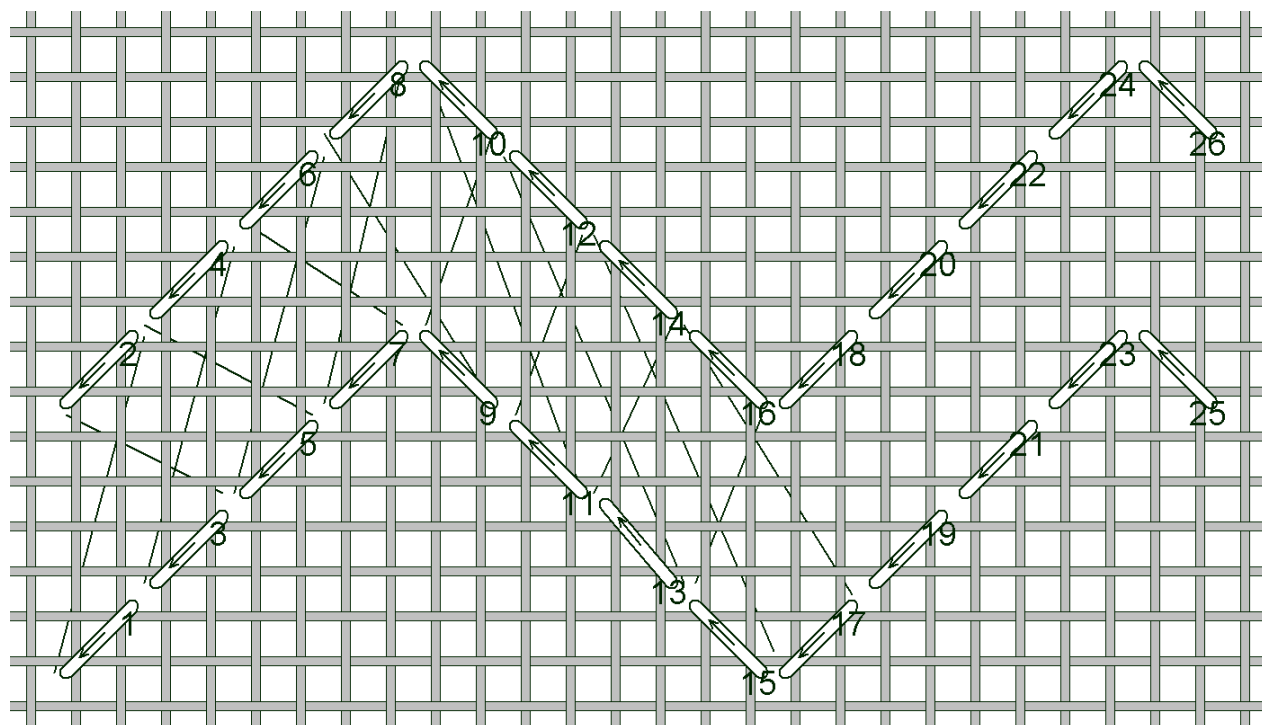


CHART #18

BAND 9: Repeat Band 1, HERRINGBONE:

PEARL COTTON SIZE 8 AND COLOR THREAD 2 PLIES OF FLOSS OR SILK AND 1 OF PEARL #12, TAPESTRY NEEDLE #24 & 22

20. Begin 12 fabric threads below Band 8 and repeat Band 1.

FINISHING:

To finish, first check your colored thread to make sure it does not bleed. Wash your piece and either block or steam press until dry. You will have to do some pulling as the pulled stitches need to be pulled straight in order to see the holes.

A SHORT BIBLIOGRAPHY

de Dillmont, Theresa. **The Complete Encyclopedia of Needlework.** Philadelphia, Pa: Running Press, 1978.

Fangel, Esther; Winckler, Ida, & Madse, Agnete Wuldern. **Danish Pulled Thread Embroidery.** New York: Dover, 1977.

Fry, Mary. **Pulled Thread Workbook.** Summit, N.J.: Self-Published, 1978.

J. and P. Coats Ltd 1958. **Anchor Manual of Needlework.** Hong Kong: Interweave Press, 1990.