

Aztec Scissors Case – Side Two

From the EGA Stitch-a-Long (SAL) Facebook group, June 2021. For Part 1, see the EGA website here:

<https://egausa.org/aztec-scissors-case-april-2021-stitch-a-long/>

You can join the EGA SAL Facebook page here:

<https://www.facebook.com/groups/486902244995324>



Supplies needed (same listing from part 1) – you don't need anything new:

18-ct mono canvas – cut size 6" x 12" (orientation doesn't matter – just use the same dimensions). I used Ecru.

Threads:

One ball (partial) #8 pearl cotton -- I used ecru (DMC) to match my canvas

Four skeins #5 pearl cotton (DMC). I used :

- 825 (blue)
- 907 (lime green)
- 727 (yellow)
- 740 (orange)

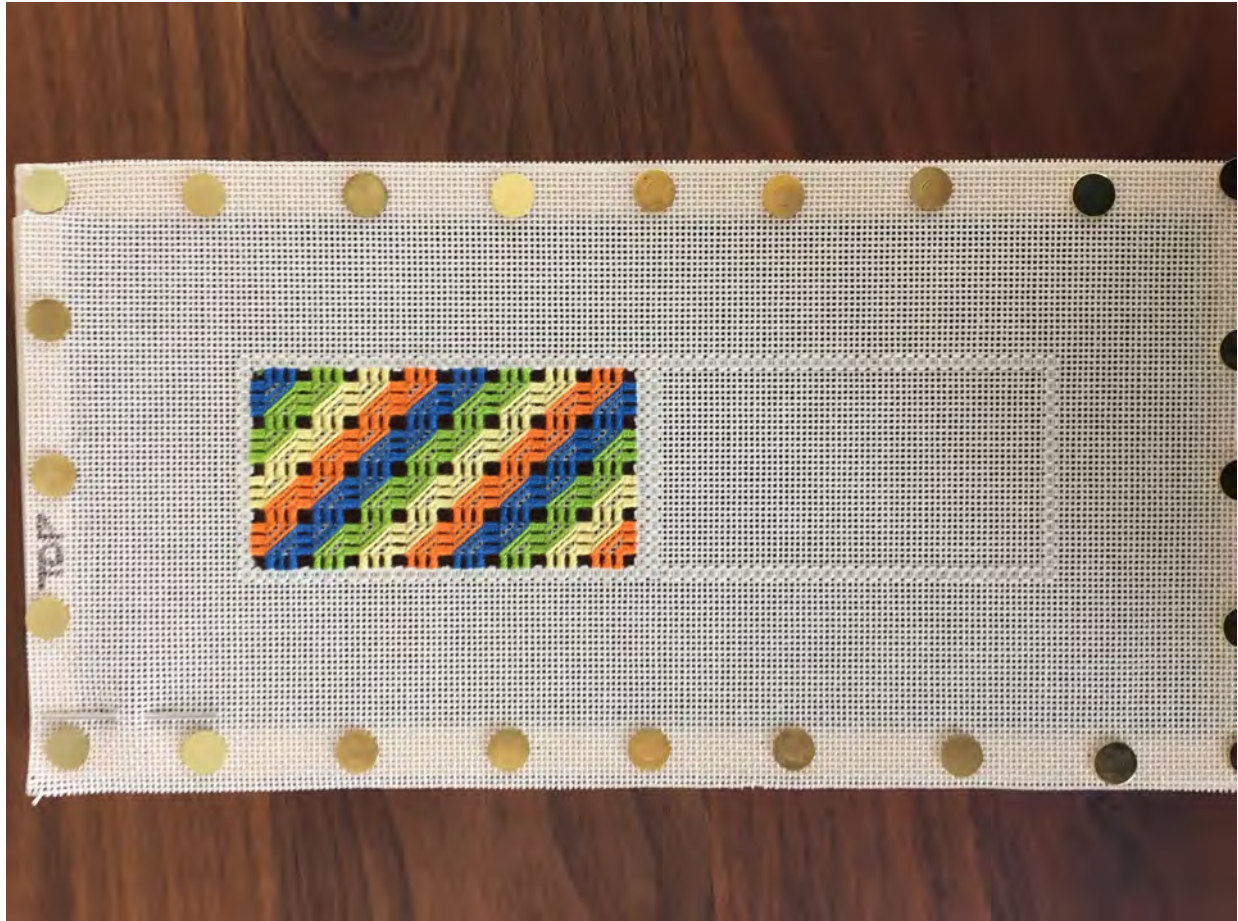
See Part 1 (on EGA website) for setup and stitching instructions for Side 1.

If you have a copy of the stitch book, *Stitches to Go* by Suzanne Howren and Beth Robertson, it will be helpful in stitching the four quadrants of the design.

Aztec Scissors Case – Side Two

I graphed each section, but the additional information in the book may be useful if you are new to counted canvas needlepoint.

If you finished Side 1, your project should look like this:



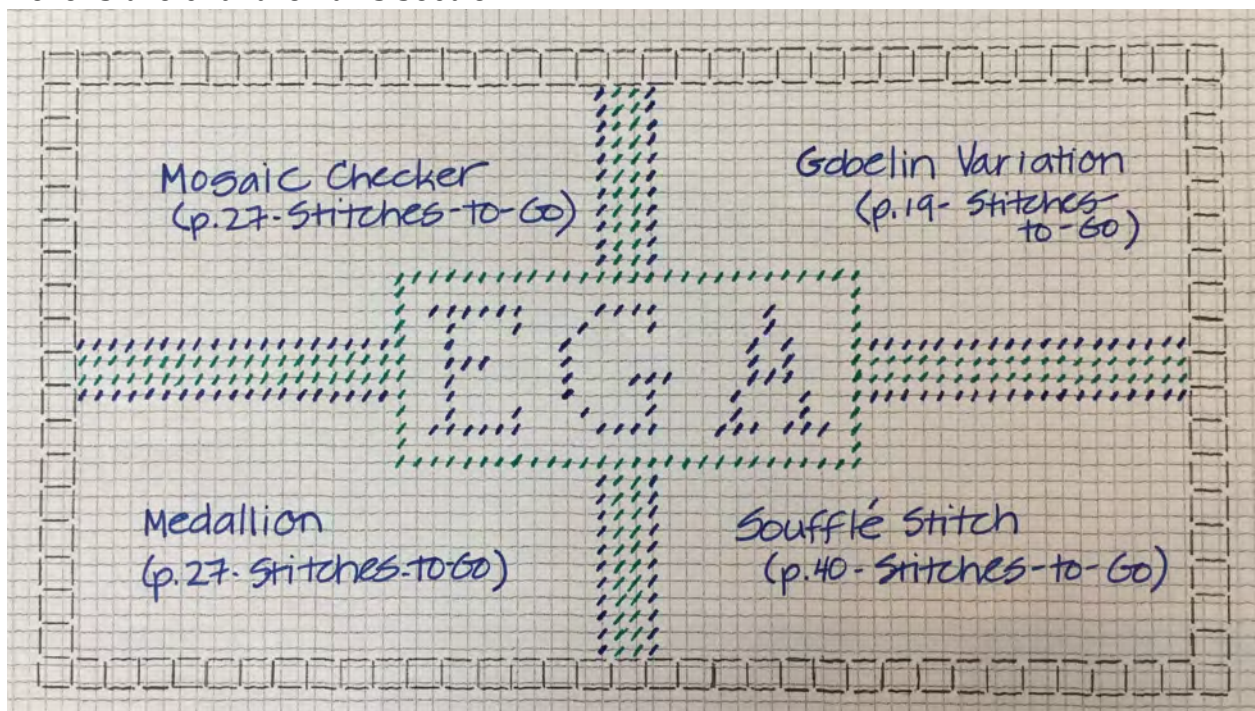
Side 2 will be worked within the four-sided stitch border on the right-hand side of the project.

Aztec Scissors Case – Side Two



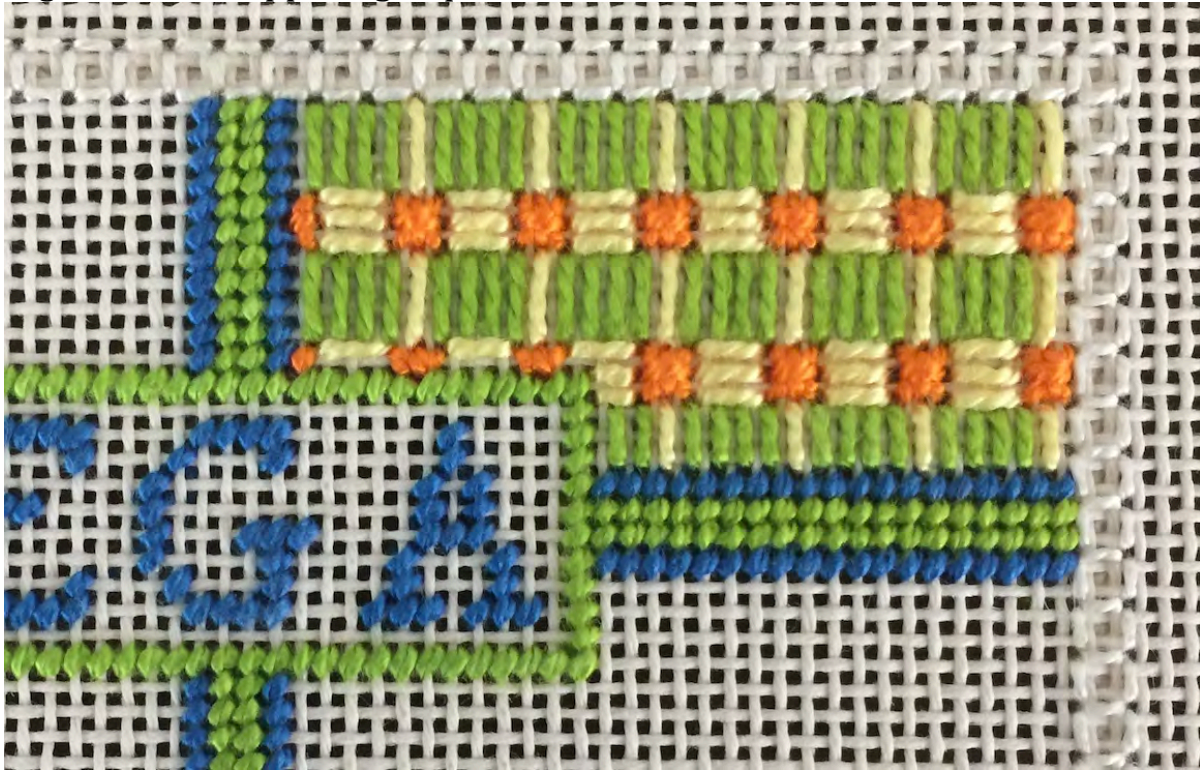
The center design and the dividing bands are all done in tent stitch, using the lime green and blue pearl cotton as shown. Be careful not to carry threads across the back when stitching the letters. You could also choose to use your initials, if you prefer.

Here is the chart for this section:

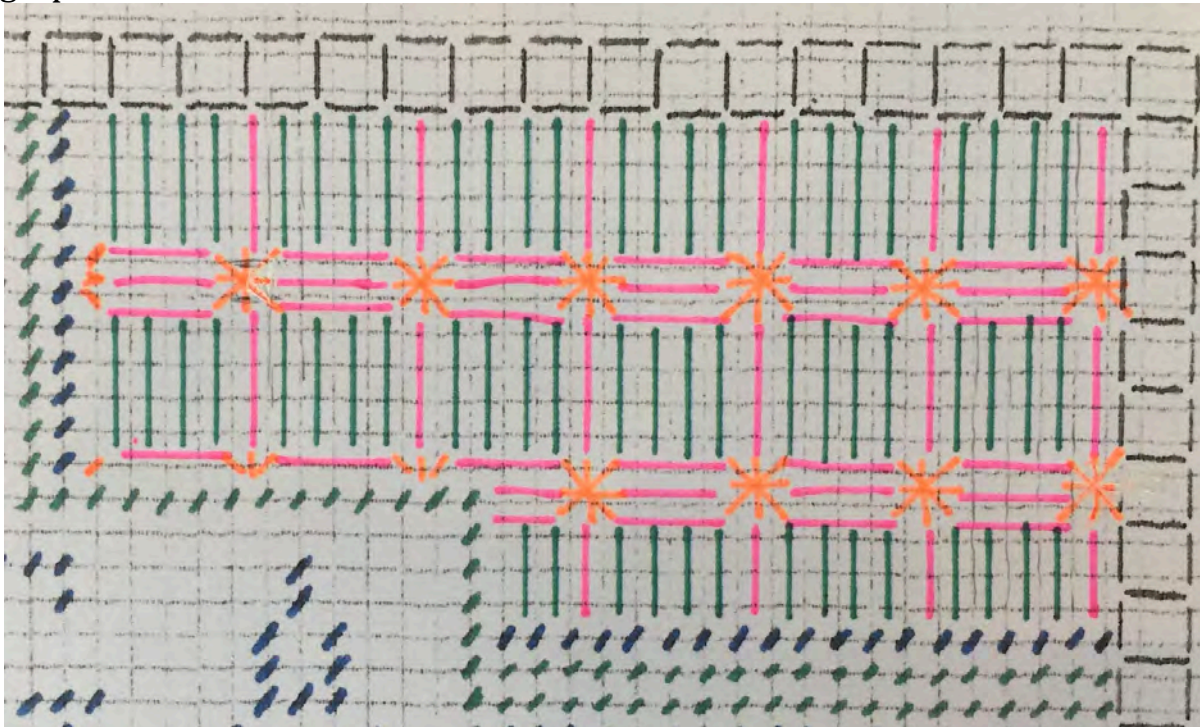


Aztec Scissors Case – Side Two

Once the center is established, we'll work on each of the four quadrants. I began with the upper right quadrant:

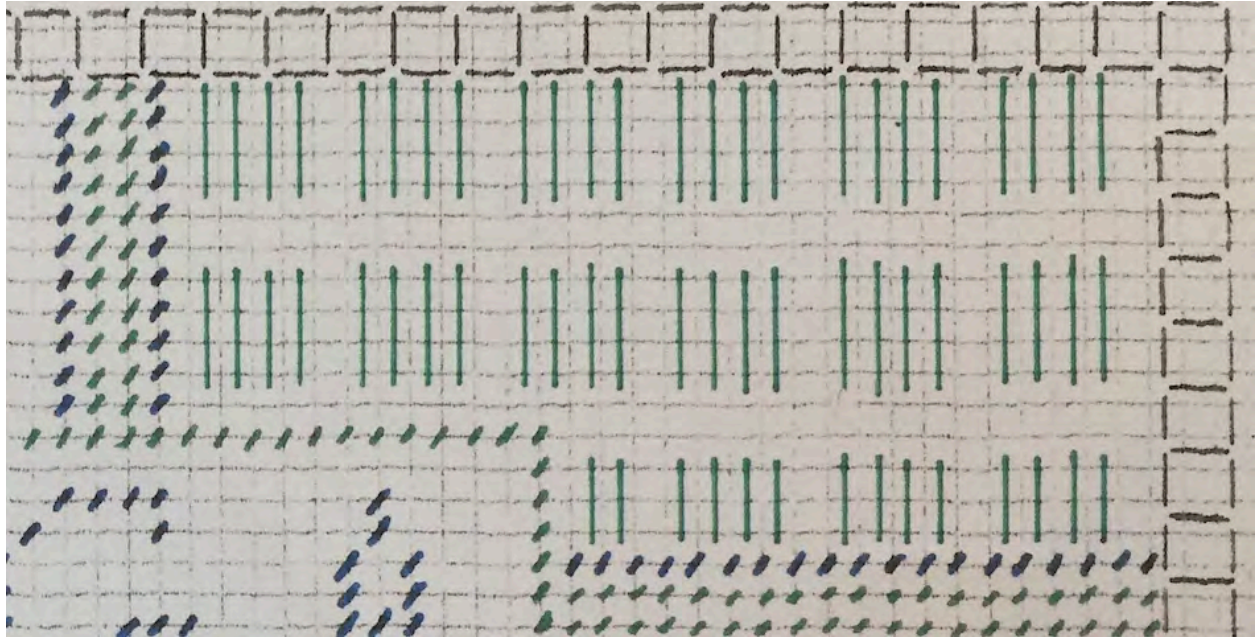


The *Gobelin Variation* can be found on page 19 of *Stitches to Go*. It is also graphed below:



Aztec Scissors Case – Side Two

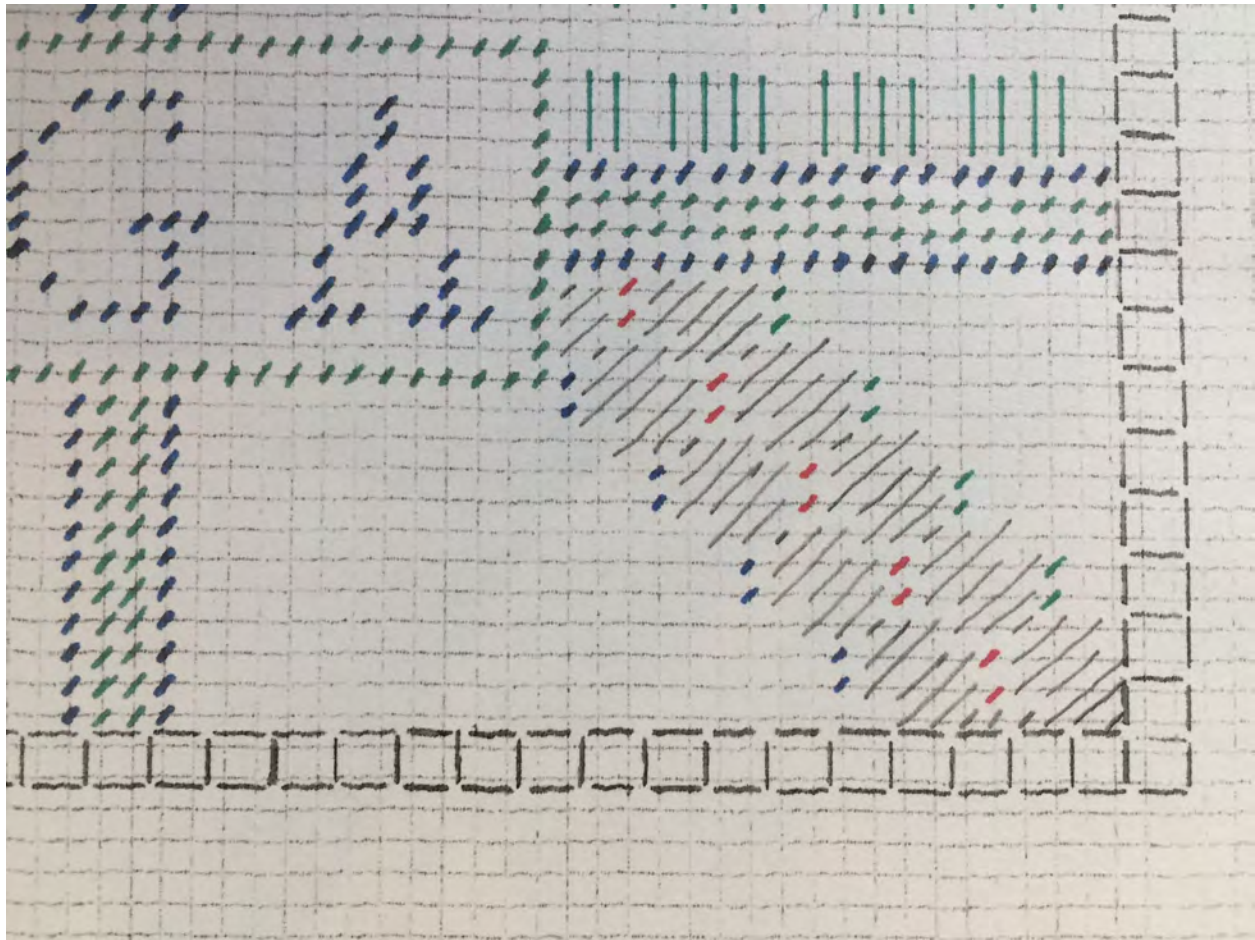
It's easier to see if we break this down step-by-step. You may also find it easier to copy from the picture showing the fully stitched area. I began with the sets of lime green Gobelin stitches. These are the upright stitches in green in chart on page 4. The stitches are four threads high (except where compensated next to the dividing band).



After you've set the pattern by stitching the lime green Gobelin stitches, add the single upright Gobelin stitches in yellow between each set and the sets of three horizontal Gobelin stitches in yellow underneath each set of lime stitches. The stitches worked in yellow are shown in PINK on the chart on page 4. (Yellow didn't show up well on the chart.) To complete this section, work Smyrna crosses over two threads in the remaining spaces. These stitches are graphed and worked in orange. Compensate as needed. I made my last stitch of each Smyrna cross in a horizontal direction.

Aztec Scissors Case – Side Two

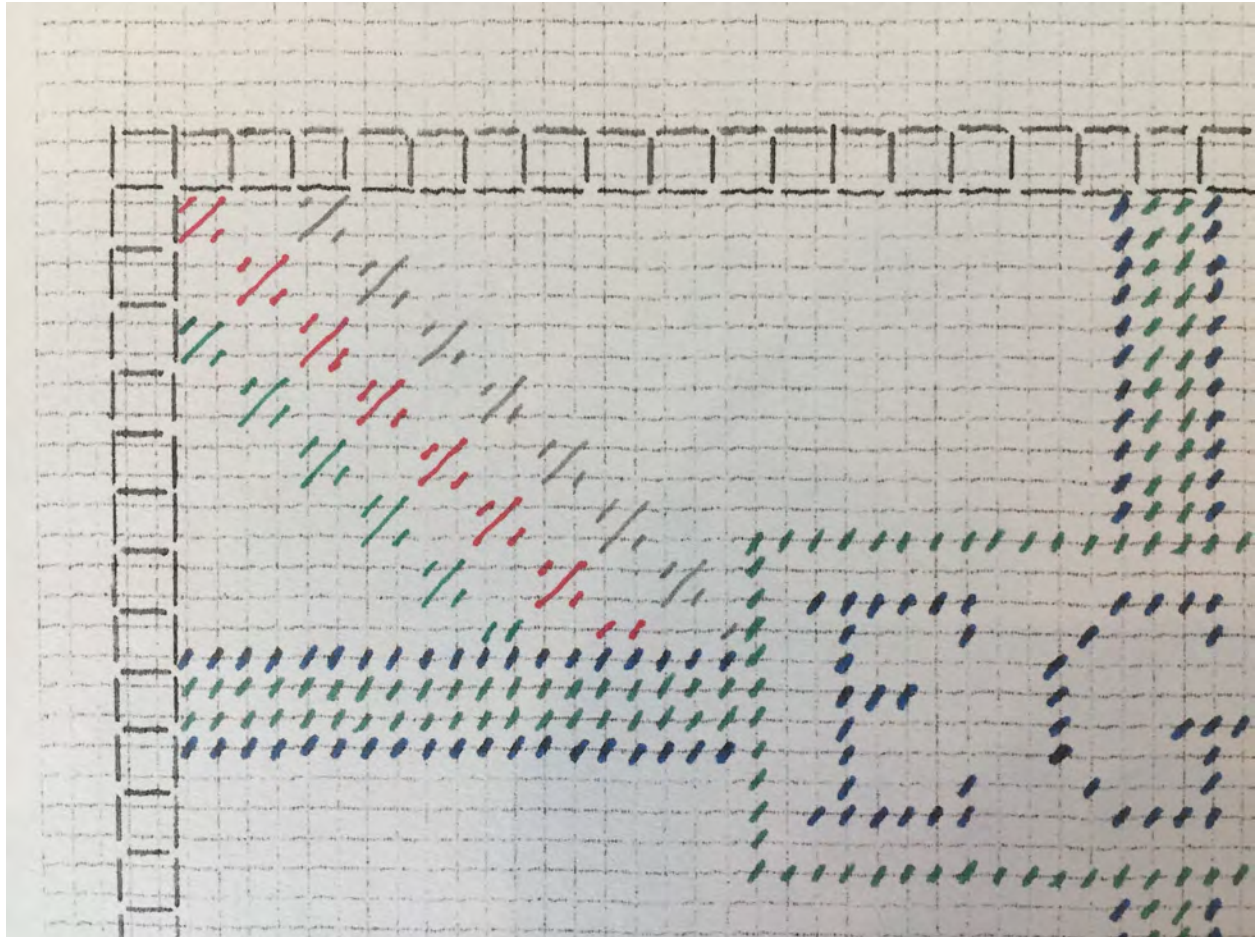
Moving to the lower right quadrant...This is worked in the Soufflé stitch. See page 40 in *Stitches to Go*, if you have it.



Using the blue (color 825) pearl cotton, begin the stitch in the lower right hand corner. The gray (pencil) stitches are all worked in the blue pearl cotton. The sets of two tent stitches are filled in using diagonal rows in the remaining three colors (lime green, yellow and orange). See the above chart and the color picture of this section for placement.

Aztec Scissors Case – Side Two

Moving to the upper left quadrant...This area is stitched in Mosaic Checker stitch (page 27 in *Stitches to Go*). Begin in the upper left-hand corner and work a diagonal row of Mosaic stitches in yellow pearl cotton. See the color photo and the chart below:

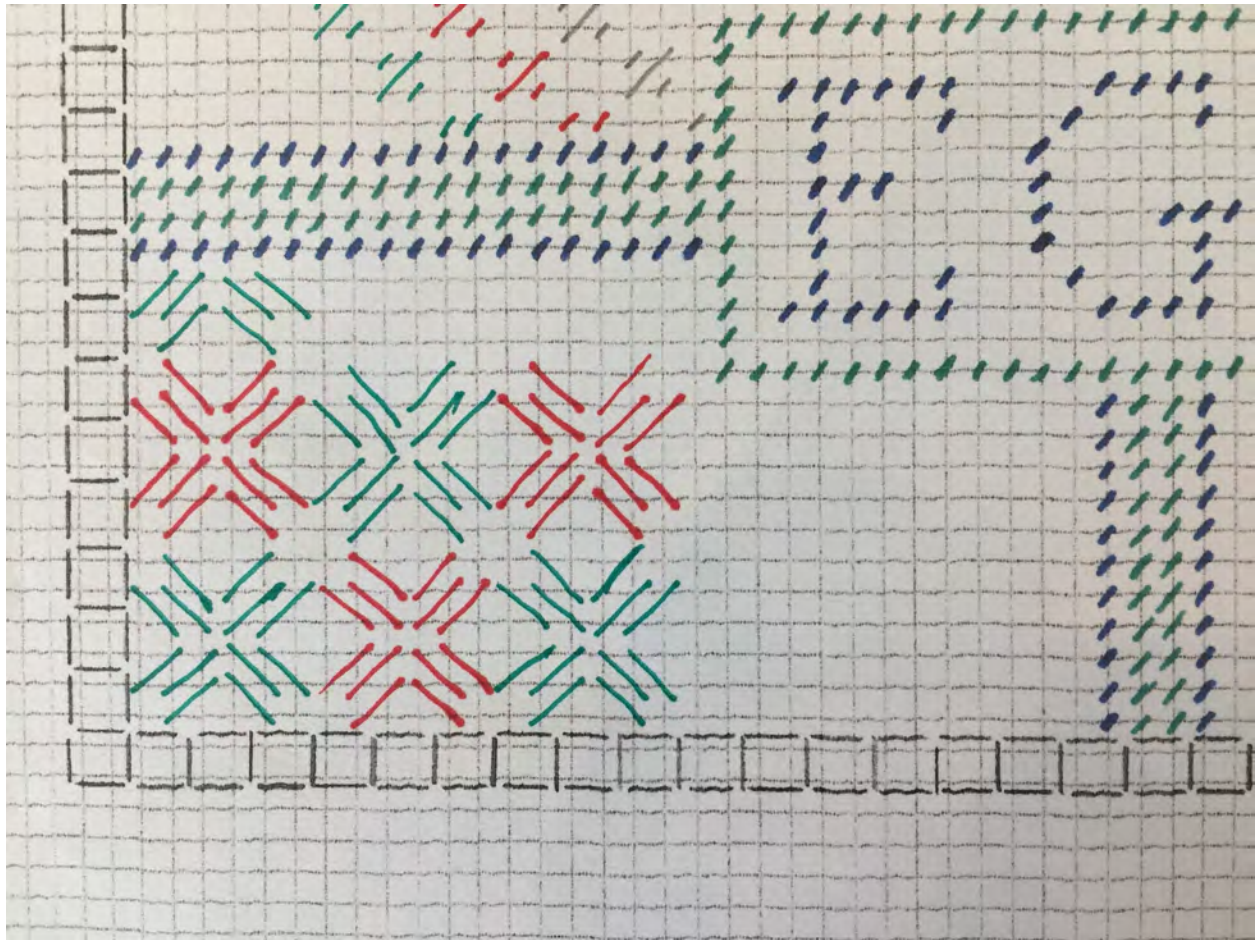


I worked the stitches charted in red using the yellow pearl cotton. (Again, yellow didn't show up on the graph.)

Once the diagonal rows of Mosaic stitch are complete, fill in the remaining areas with tent stitch using the blue (color 825) pearl cotton. I found it easiest to work these in diagonal rows, completing each four stitch square as I went.

Aztec Scissors Case – Side Two

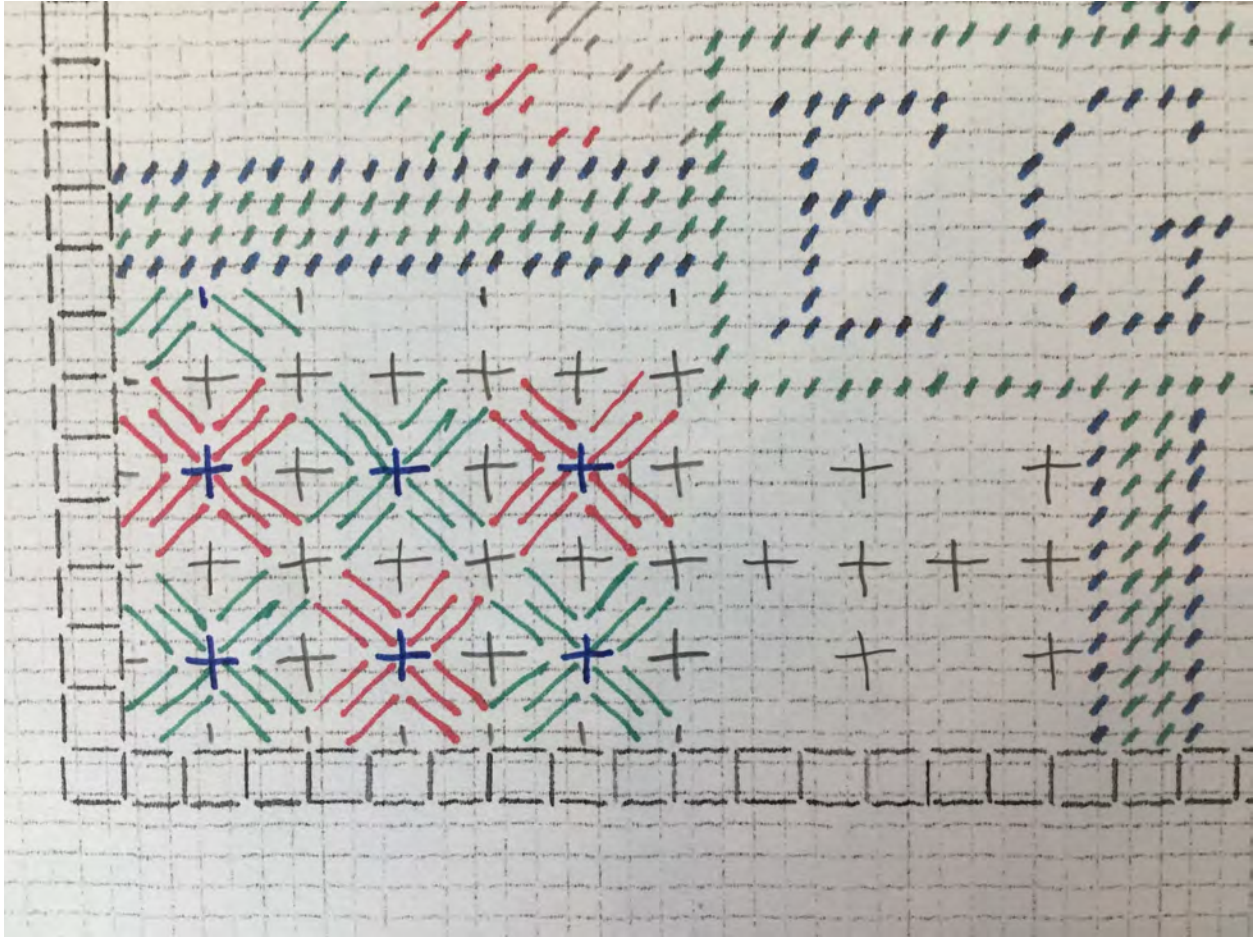
Our last quadrant is the lower left. This area is worked in the Medallion Stitch found on page 27 in *Stitches to Go*. See the graph below for the first step:



Begin in the lower left hand corner with the orange pearl cotton. The stitches graphed in green are stitched in the orange pearl cotton and the stitches graphed in red are stitched in the yellow pearl cotton.

Aztec Scissors Case – Side Two

The next step is to add the upright crosses that form the center of each medallion. It also looks like a flower to me, so I think of them as the flower centers. All of the flower centers are stitched using the blue pearl cotton. See the chart below.



The final step is to add the background of upright crosses. These are shown in pencil (gray) in the above chart. You'll notice that these green stitches form a full row between the medallion (flower) rows and alternate with the blue flower centers. All the green stitches are worked in an upright cross over two threads. My final stitch on each upright cross is worked in a horizontal direction throughout.

You have now completed the stitching for the back of the scissors case. Take a moment to admire your work and we'll progress to the assembly of the scissors case in the next lesson.

Aztec Scissors Case – Side Two

An enlarged view of the front of the scissors case:

