

EGA Needlecase

Designed by

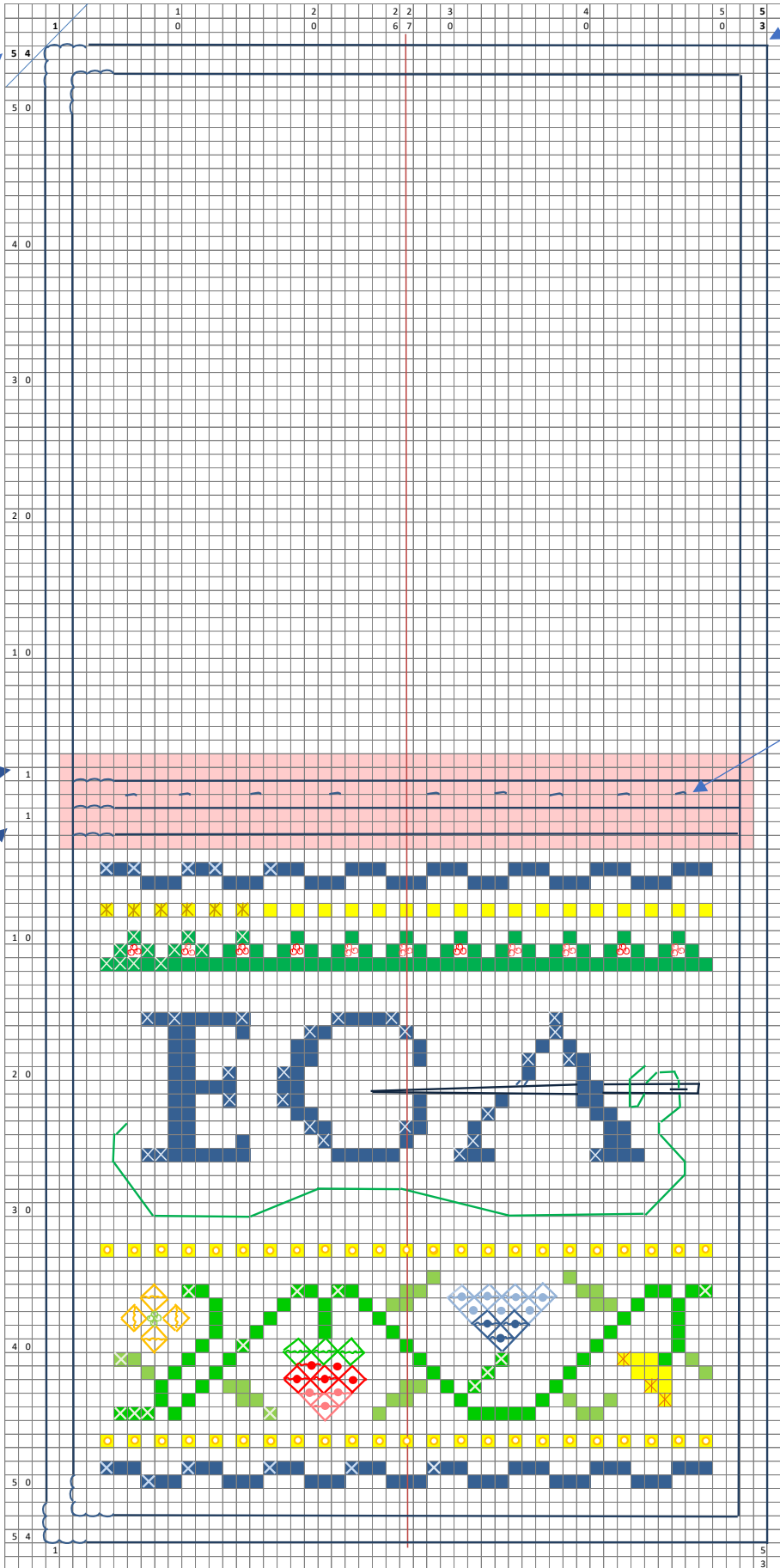
Barbara Jackson,

Tristan Brooks Designs



54

53




1

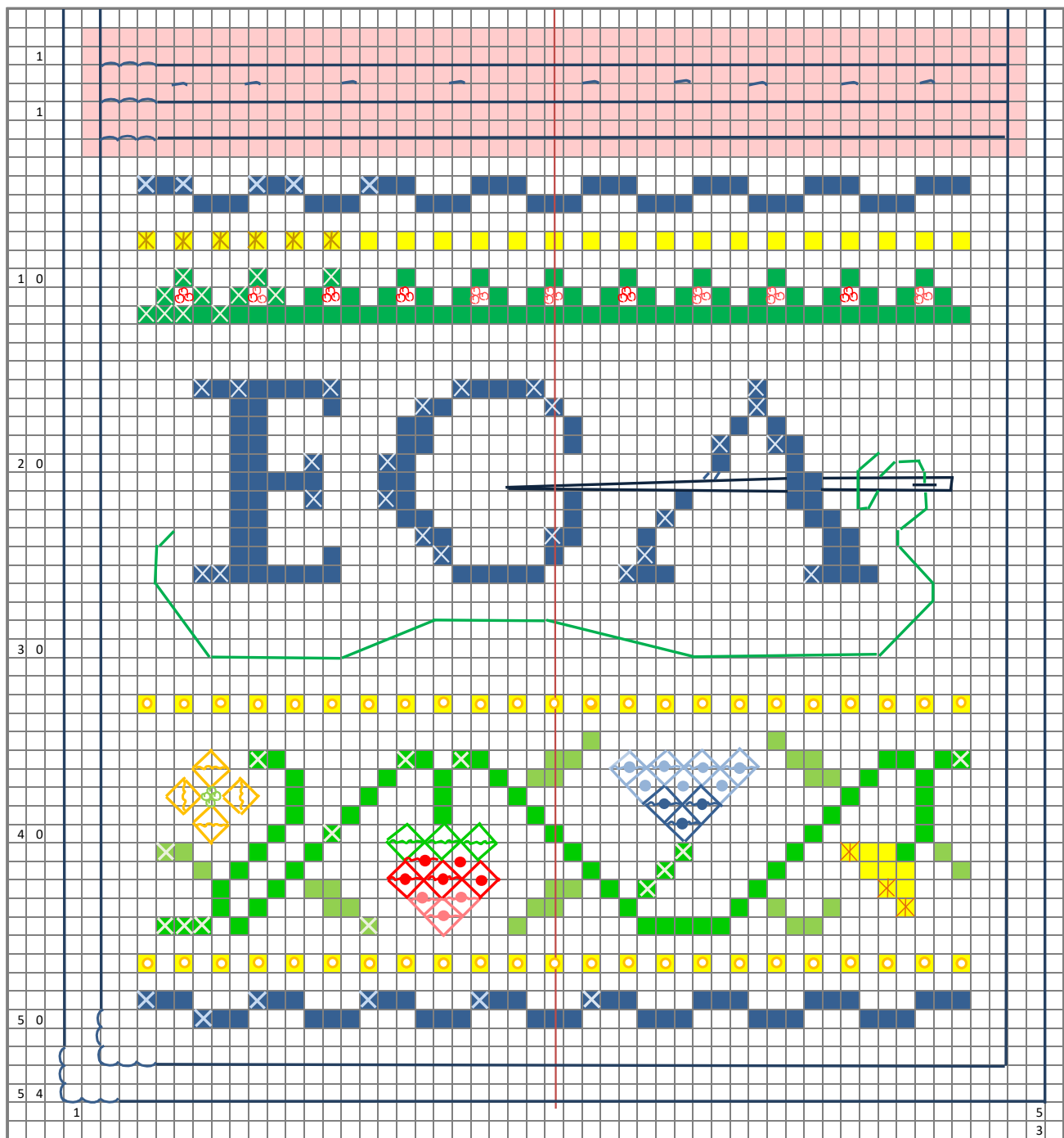
1

54

Notice the design is 54 stitches tall for both the front and back. The width is 53 stitches wide.

The  symbols indicate suggested stitching lines for attaching the felted wool on inside of case.

Use one strand for all stitching.
Each square on graph represents two linen threads.



Materials for Needle case –

- 5" x 8" 40 count linen cream
- 8" x 8" calico for lining
- 3" x 6" lightweight fleece (interfacing)
- 3" x 6" felted wool ecru
- #26 tapestry needle

Threads -

- Gloriana silk floss – Pacific Blue 057 , Blythe Green 160
Slate Blue light 160
- AVAS silk floss – Gold 2532, Red 2916, Med. Red 2915
Dk. Blue 1736
- DMC floss ecru for cording
- Sewing thread to match and sharp needle



The pink doesn't indicate anything!
It's just there to help you understand where the graphs on page 2 and 3 come together.



Pacific blue Gloriana back stitch



Gloriana Pacific blue cross stitch



AVAS 2532 Smyrna variation



Gloriana Blythe green cross stitch



AVAS Red 2916 French knot
AVAS Med. Red 2915 French knot



AVAS Dk. Blue 1736 straight stitch or back stitch (needle)



AVAS Lt. green 2133 straight or back stitch (thread in needle)



AVAS Gold 2532 eyelet



AVAS Gold 2532 Queen stitch



AVAS 2133 French knot



Gloriana Blythe green cross stitch



AVAS 2133 Cross stitch



Gloriana Lt. Blue Slate Queen stitch



Gloriana Pacific blue Queen stitch



AVAS 2532 Smyrna variation (flower)



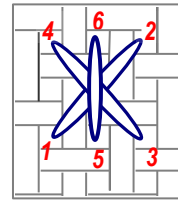
Gloriana Blythe Green Queen stitch



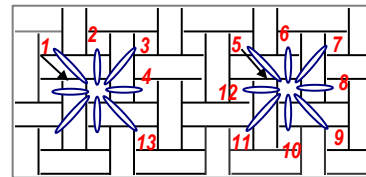
AVAS 2916 Red Queen



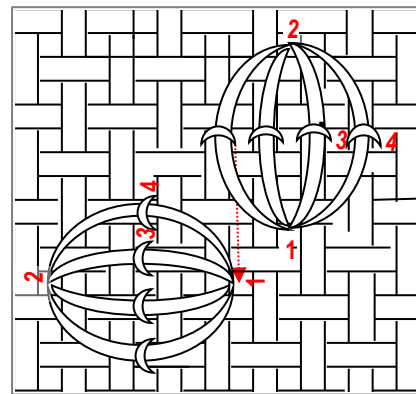
AVAS Med. Red 2915 Queen



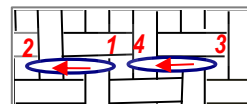
Smyrna variation



Eyelets



Queen Stitch



Backstitch



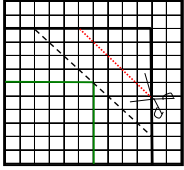
Finishing your Needlecase (Some of these notes are from another design, but the concept is the same.)

Once you have finished your stitching lightly (and I mean lightly!) press and make sure linen is squared up. Check to make sure there are no loose threads as they can cause a shadow on the front.

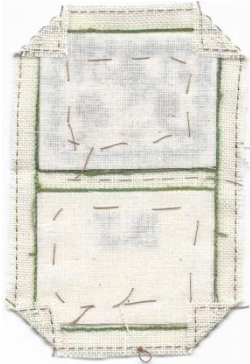
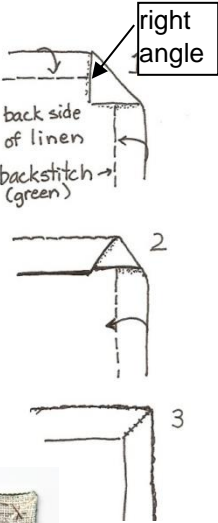
Carefully cut the linen out. There should be 8 linen threads between the cut edge and the backstitching for fold line.

Since this needlecase is small there is really no necessity in having a stiff interfacing. For interfacing, I use fleece that is cut to fit inside the backstitching. Look at the photo at the bottom left. You can see the interfacing basted in place. There is no interfacing along the spine of the needlecase. (You are looking at a picture of another needlecase that had a green border, but the concept is the same.) Cut 2 pieces approximately 2 1/2" x 2 1/2". Fit in space and clip off any extra fleece so it will fit inside backstitched areas. Baste in place.

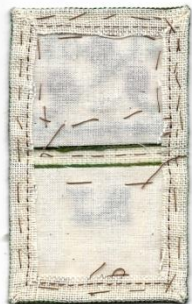
Mitering the corners: notice the dotted lines running diagonally on the corner of the graph at left. That is the folding line for the mitered corner. Now look at the dotted red line on left diagram. You will be clipping that linen out of the corner when you fold the edges in. This will keep the corners from being too bulky. The diagrams at the right do not show the corner clipped out. (It was getting too busy, so I omitted it.)



Fold the corner in along the dashed black line and finger press. Notice that the point is at a right angle to the cut edge. (No. 1) Fold in the top edge using the blue backstitching for the fold line. (No.2) Do the same thing on the right edge. Finger press the edges. The top and right edges should just meet, not overlap. When you are satisfied with the fold you will blindstitch the two folds together. (No. 3) But wait! We need to clip out the excess linen first. Carefully unfold the edges and snip out the excess linen. "Carefully" is the important word here. If you cut too deeply you run the risk of the linen unraveling at the corner. I always leave at least 2 -3 linen threads uncut at the corner. Once the snipping is done you can safely refold the corners and stitch together. I baste first to keep the corners from moving around.



Baste all around the folded edges to keep them in place. Once that is completed give the whole piece a very light pressing with a steam iron. Make sure the linen is still square.



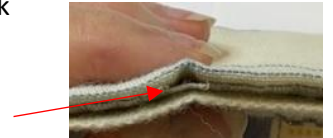
Lining the Needlecase



Make the cording to close the needlecase. Cut a piece of DMC floss about 29" long. Attach one end of floss to the right-hand beater of a hand held mixer. Turn on mixer, keeping the floss taut. When it is tightly twisted, turn off the mixer and place on table, keeping the floss taut. Pinch the twisted floss in the center and carefully fold back on itself. Let go of it gradually so it will start to twist together. If the cording is not twisted enough, you can undo and try again. Once you are happy with the twist, cut off the end connected to the beater and knot the two ends together. You will need two completed cords for the needlecase. Place the knotted ends on the open needlecase in the middle of both ends and stitch to linen with tiny invisible stitches before adding the lining.

The lining for the needlecase needs to come within 2-3 linen threads of the folded linen edge.

Cut a piece of lining fabric that is about 3/16" past the edges of the open needlecase. Fold in one side about 1/4". Press. Fold in another side in the same manner and press. I did not miter the corners. Continue folding and pressing until you have a rectangle. Be sure to get the size right. Once you are satisfied, place the lining on the linen and carefully baste down. Use a stab stitch motion to prevent the lining from slipping. On items this small what looks like a tiny misstep can become a major eyesore in the end. Slipstitch the lining to the inside of needlecase. One trick that I use to get the case to fold smoothly – "skip" over the red arrow) where the fold in the needlecase occurs. It is not a large space (about 4 linen threads) but it really helps the case to fold up when you have interlining, lining and felted wool sandwiched inside the linen.



Place the felted wool on the lining. Clip the sides to fit the case. The wool will need to be shorter at the top and bottom. When you close the case the wool "creeps" towards the edge. You can see from my example how much I cut. The wool comes almost to the edge when the case is folded. Attach by making tiny hidden stitches along the spine that go through the wool and the linen. I tried to only catch one linen thread each time. They are very hard to detect now that the needlecase is finished. Just watch the tension so "dimples" do not form.



My favorite way of closing - wrap the cords around the case!

A little extra I added...

I wanted to create a pocket that would hold a tiny pair of scissors. I cut out a piece of lining fabric that was 2" x 4". The sides were turned under to form a rectangle that was about 1 ½" x 3 ½". I basted the sides down and pressed. I then folded the long rectangle in half to create a squarish pocket. You can see how I placed the pocket with one of the edges turned down and to the left on case. That was because I needed to make it easier to remove the scissors. I then slipstitched the little square to the back of case. The folded edge became the top of the pocket. Do test your scissors before attaching pocket. I had planned to put pocket in middle but realized that the edge of scissors would hang out beyond the edge when case was folded.



Copyright 2021, Barbara Jackson/Tristan Brooks Designs. All rights reserved. Permission granted for EGA to post this document on its EGA SAL Facebook page (<https://www.facebook.com/groups/486902244995324>) and on its website: <https://egausa.org> . EGA has granted permission for Barbara Jackson to use its logo in this design AND has granted permission for Barbara Jackson to create and sell supplies packets for this project. Permission is granted for EGA members and visitors to print and stitch this project. The project directions themselves are NOT to be sold.