

FALL BAND SAMPLER

BAND 4: Guillouche Stitch with beads



1. Start at the left hand basting thread 6 fabric threads down from the chevron stitch.
2. Place 3 satin stitches over 3 fabric threads. Skip 3 fabric threads; repeat the satin stitches. Work to end of row, ending 1 fabric thread before the basting, see chart #12. Work a total of 13 sets of satin stitches.

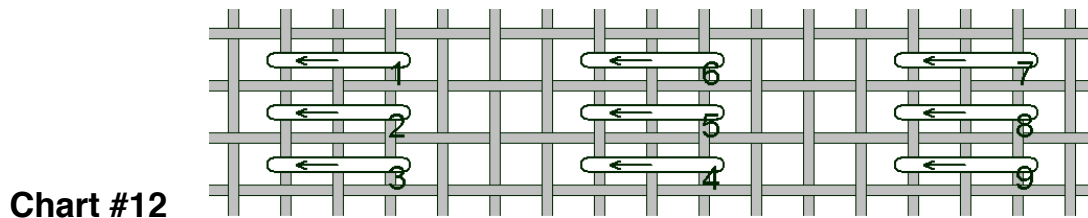


Chart #12

3. Weave through the satin stitch blocks. Weave in a figure eight fashion. Bring needle up between the 2nd and 3rd stitches of the block and slide the needle under the first two stitches to start the weaving. Go under all stitches following chart #13.

DO NOT PIERCE FABRIC AS YOU WEAVE.

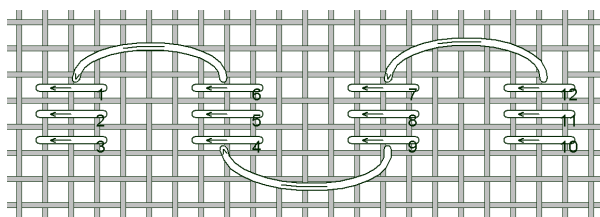


Chart #13

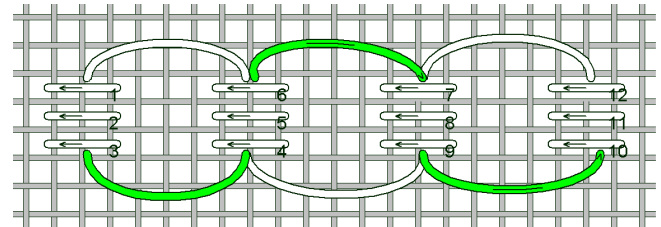


Chart #14

4. At the end of the row continue weaving back to the beginning of the weaving. At the end take the needle to the wrong side between two stitches, green stitches on chart #14.
5. The second row is off set by three stitches. Start the second row 6 fabric threads below the satin stitches of first row and 3 fabric threads from the basting stitch, chart #15.

FALL BAND SAMPLER

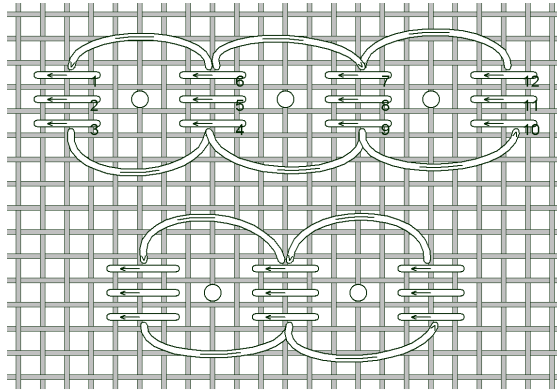


Chart #15

6. When weaving is complete place a seed bead in the center as shown on chart #15. Use beading thread and tapestry #26 needle.

BAND 5: Eyelets



1. When working an eyelet, always go down in the center and pull to form a hole.
2. Start 10 fabric threads below the satin stitch blocks at the left basting thread. There are eight stitches in each eyelet, straight stitches are worked over 3 fabric threads and slanted stitches over 2 intersections

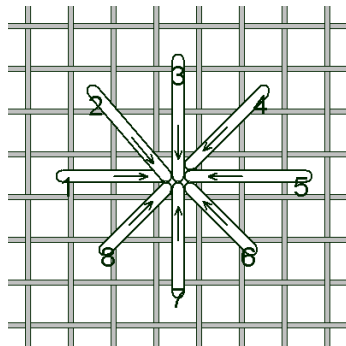


Chart #16

3. Each eyelet is made individually 4 fabric threads apart. See Master chart for placement. There are 8 eyelets in the first row. The second row is off set. Start 5 threads from right basting thread with stitch #5. Work 7 eyelets and 8 eyelets for the third row.

FALL BAND SAMPLER

BAND 6: Blackwork Oak Leaves



1. Start 19 fabric threads down from band five, eyelets, and at the basting thread. From here choose the method you wish to work this band.

A: The leaves can be worked in a backstitch, chart #17, where threads are not skipped. Start at the basting stitch work 6 stitches over 2 threads before starting stem of the leaf.

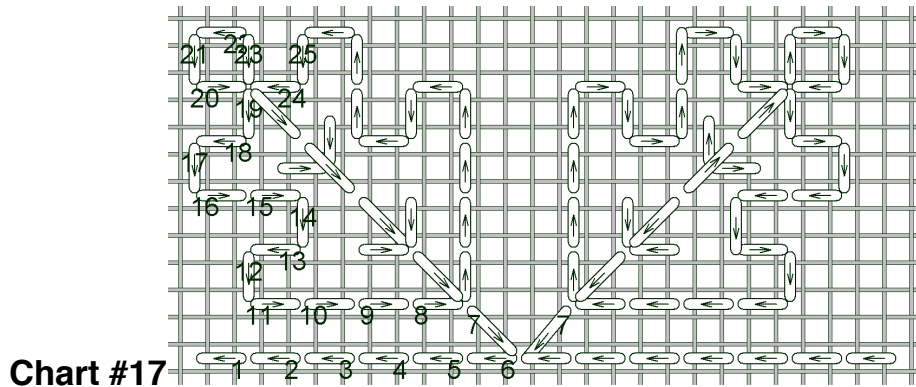


Chart #17

B: A second method is the Holbein stitch. Worked in two journeys, follow chart #18. Starting at the basting stitch and work 6 stitches over 2 threads before starting the stem of the leaf.

The second journey is in green. The yellow stitches are the return stitches in the vein and the first journey of the second leaf. Repeat the white and green stitches for the third leaf.

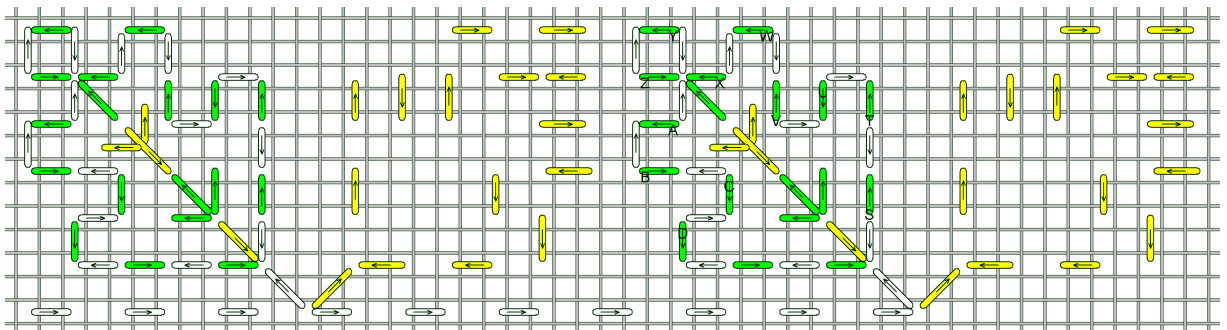
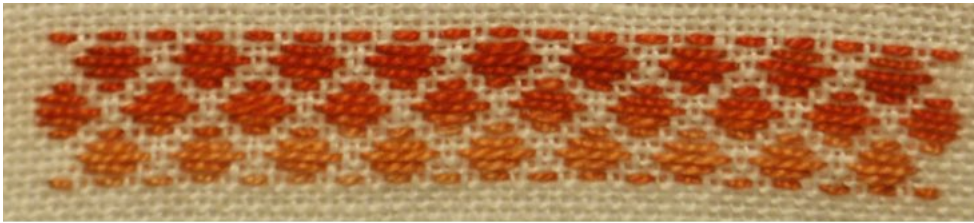


Chart #18

FALL BAND SAMPLER

BAND 7: Darning Pattern



1. Working from left to right, start 6 fabric threads below band 6 and 1 fabric thread from the basting third.
2. **Row 1:** work across the row, left to right over 2 fabric threads, under 2 fabric threads for 19 stitches.
3. **Row 2:** Work from right to left, chart #19. Work over 4 fabric threads and under 4 fabric threads.
4. **Row 3:** Worked left to right. Start 3 fabric threads from the basting thread. This row is over 6 fabric threads and under 2. Follow master chart working from right to left and left to right. **WATCH FOR COMPENSATION STITCHES.**
5. **Row 4:** repeat row 2, over and under 4 fabric threads.
6. **Row 5:** becomes row 1 for the second set of motifs.

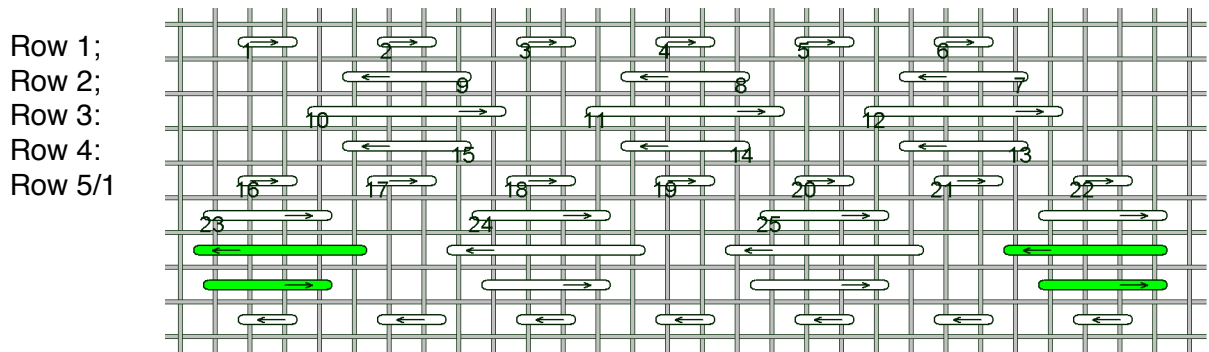


Chart #19

4. Chart #19 diagrams the beginning and the ending of row 2, the end motifs have compensating stitches, in green. These will appear again in the fourth row.